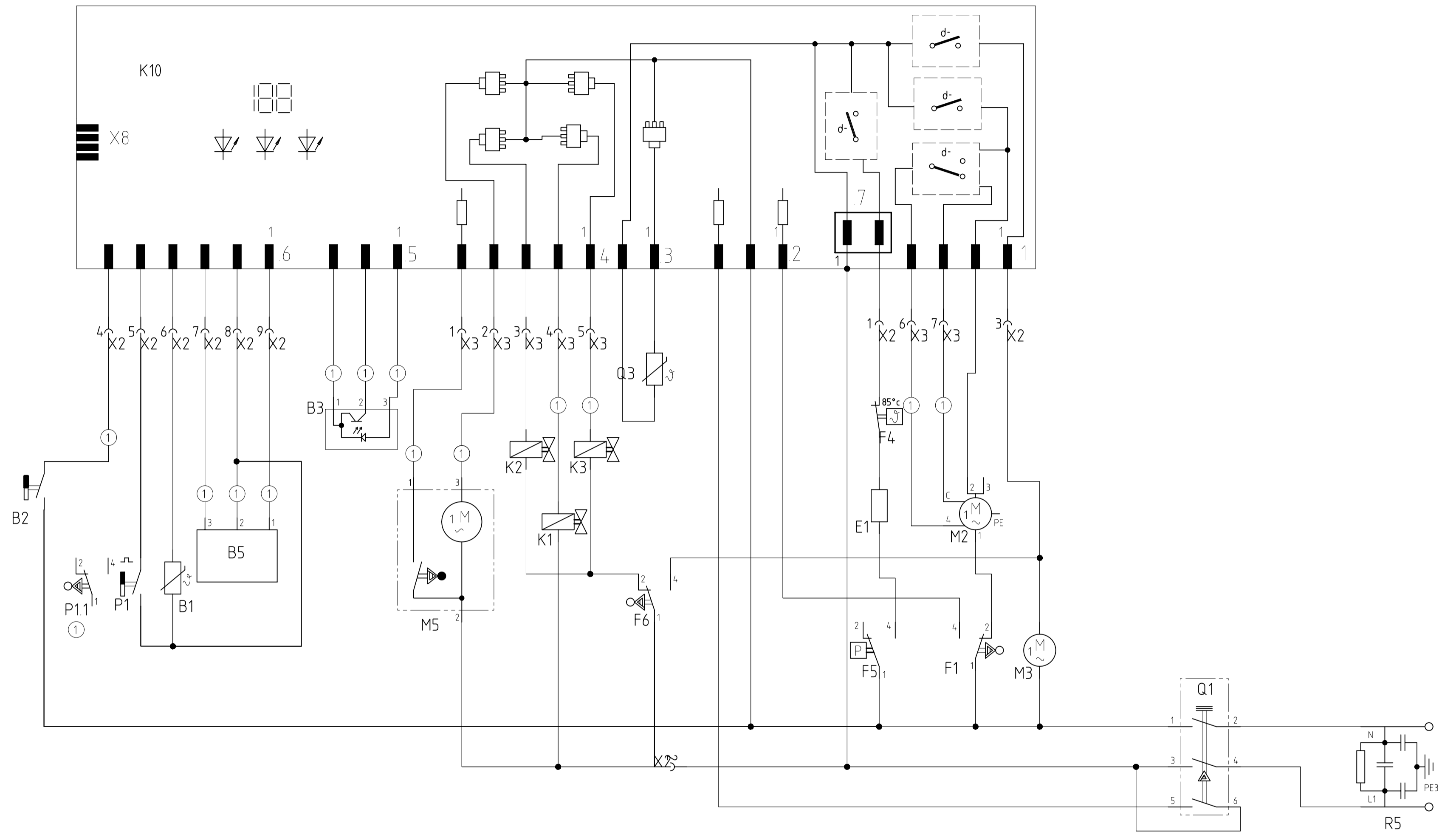


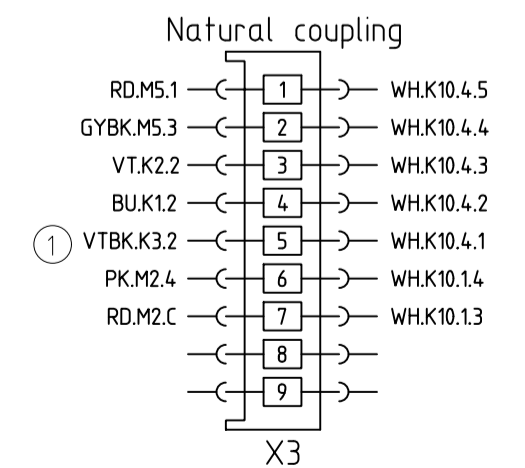
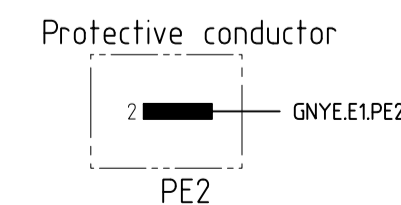
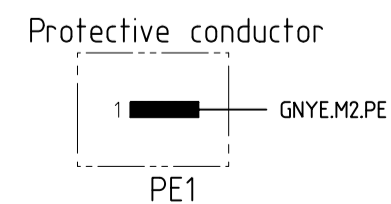
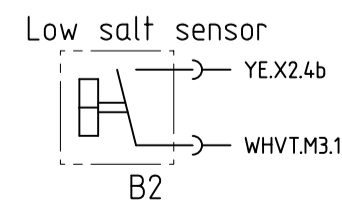
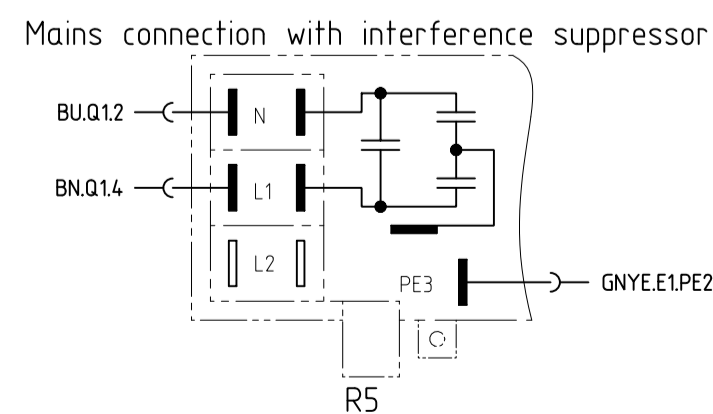
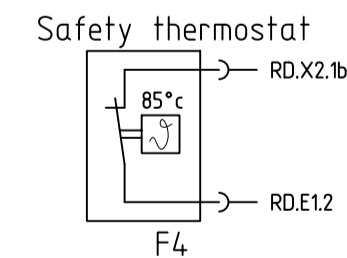
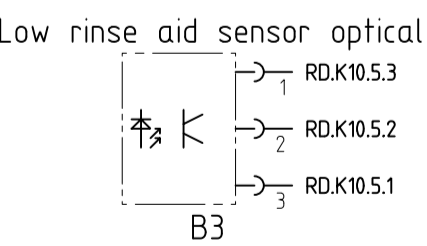
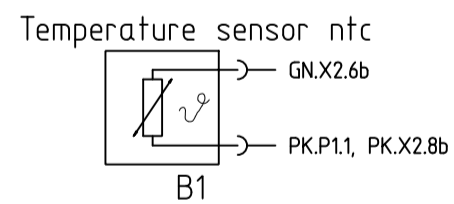
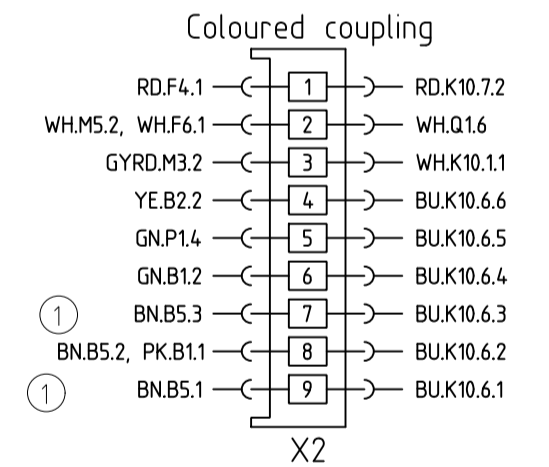
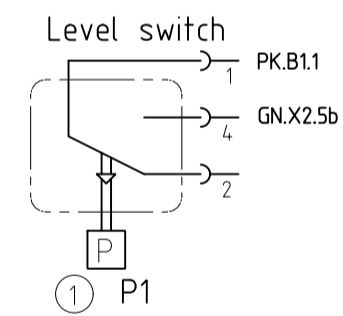
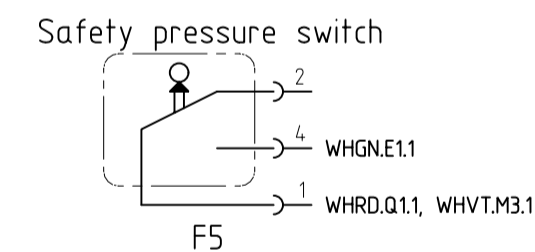
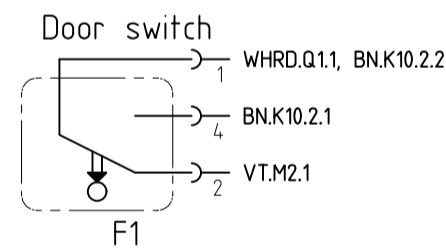
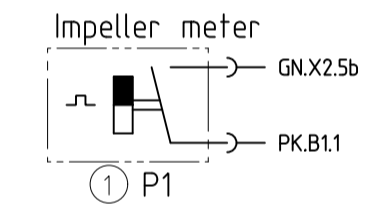
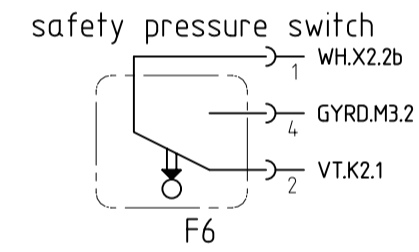
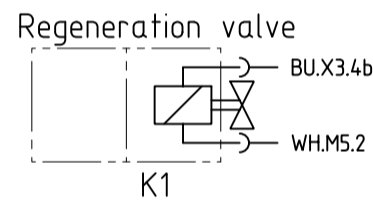
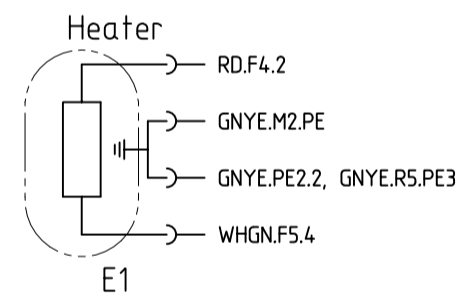
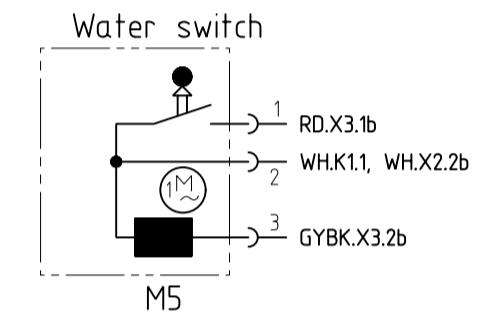
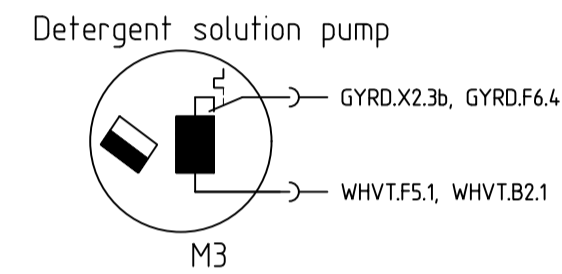
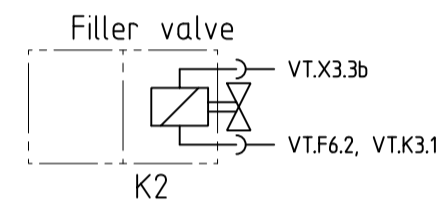
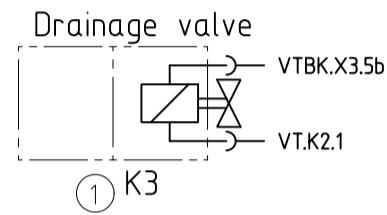
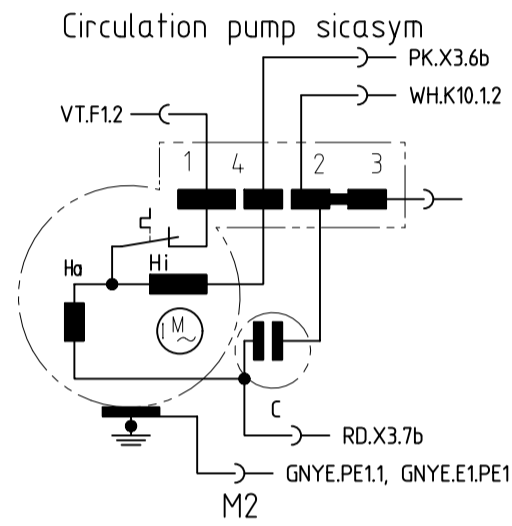
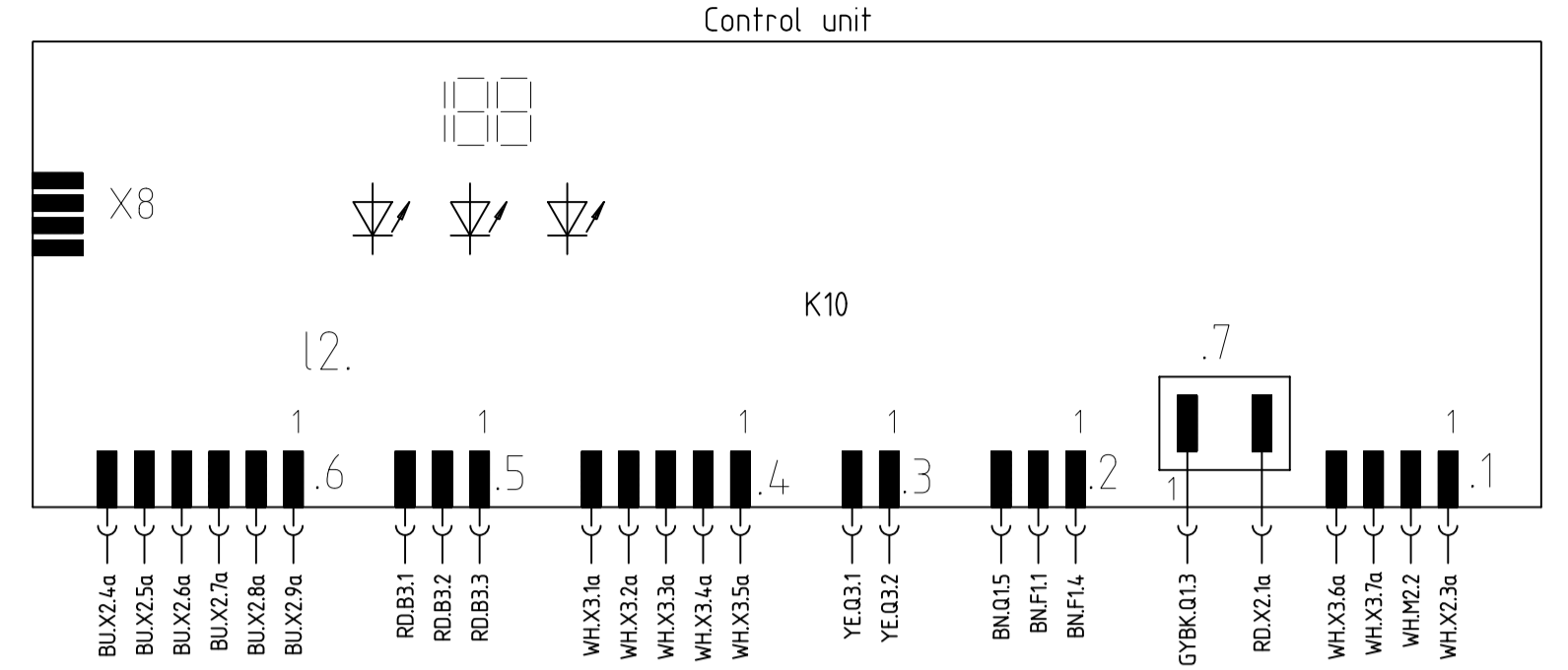
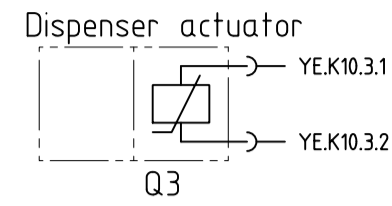
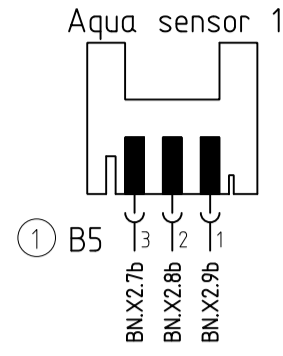
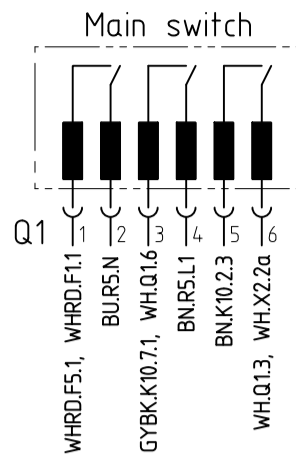
The reproduction, transmission or use of this document or its contents is not permitted without express written authority. Offenders will be liable for damages. All rights including rights created by patent, grant or registration of a utility model or design are reserved. Copyright reserved.



1 2 3 4 5 6 7 8 9 10 11 12 13 14 15 16 17 18 19 20 21 22 23 24 25 26 27 28 29 30 31 32 33 34 35 36 37 38 39 40 41 42 43 44 45 46 47 48 49 50 51 52 53 54 55

REF	Components	Path	REF	Components	Path	REF	Components	Path
B1	Temperature sensor ntc	15	F6	safety pressure switch	29-31	P11	Level switch	12,13
B2	Low salt sensor	11	K1	Regeneration valve	27	Q1	Main switch	46,48
B3	Low rinse aid sensor optical	20-22	K2	Filler valve	26	Q3	Dispenser actuator	30
B5	Aqua sensor 1	16-18	K3	Drainage valve	28	R5	Mains connection with interference suppressor	52,54
E1	Heater	37	K10	Control unit	13-18,20-22,24-30,32-34,36-41			
E1	Heater		M2	Circulation pump sicasym	39-41			
F1	Door switch	39,40	M3	Detergent solution pump	42			
F4	Safety thermostat	37	M5	Water switch	22,24			
F5	Safety pressure switch	36,37	P1	Impeller meter	14			

① Fitted depending on features



① Fitted depending on features

Designation	LCS	Document No.	Rev	Sheet-No.
Connection Diagram	EN	5600 0000118489	A	1
GV 450 GHJ Ww,Sa		Material No. 9000031032		of 1

To Request

The reproduction, transmission or use of this document or its contents is not permitted without express written authority. Offenders will be liable for damages. All rights including rights created by patent grant or registration of a utility model or design are reserved. Copyright reserved.

Customer service test program

1. Selection:

Switch off the appliance and close the door. With the door closed, keep two buttons pressed and press the main switch until the display indicates the modification coding.

2. Selecting a special program:

After both of the buttons have been released LED 3 will light up and LED 4 will blink. The display will indicate P0. The special program required can be selected by pressing button S3.

- P0 = Read out error storage
- P1 = Customer service test program
- P2/P3 = In-plant test programs
- P4 = Modification coding

Press S6 in order to confirm the program selected.

3. Read out fault memory (P0)

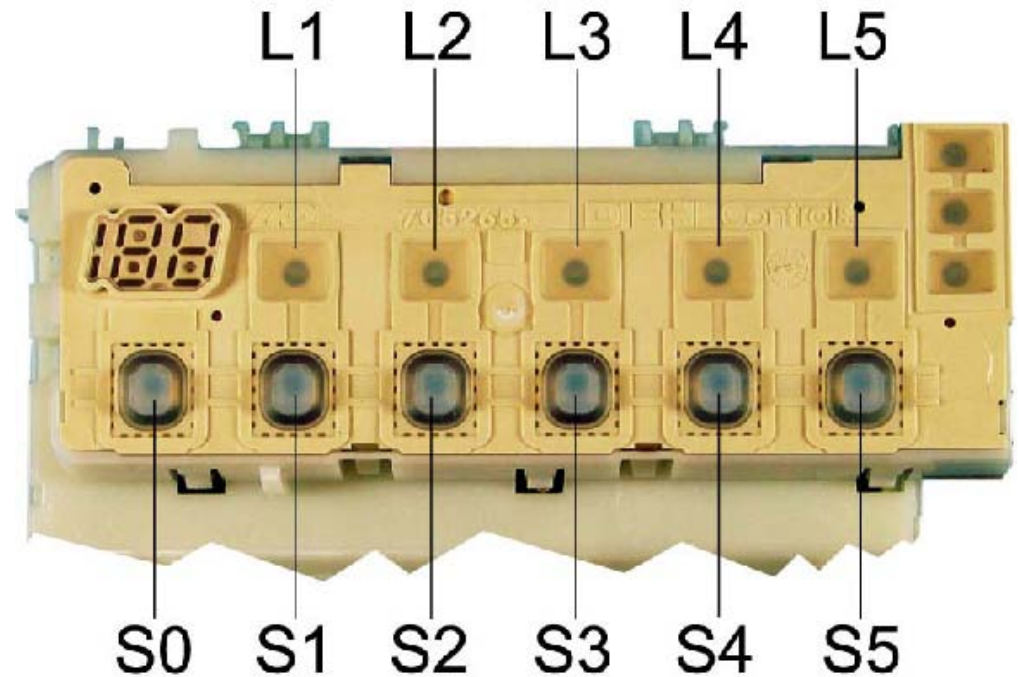
Pressing the S4 button will enquire on the errors of the last eight rinsing cycles. When the button is pressed the rinsing cycle is indicated (00 – 07). When the button is released the respective error (see chart) is indicated. If several errors occur in a rinsing cycle only the most significant error will be indicated. The customer service program can be started by pressing button S3.

4. Customer service test program (P1)

The customer service program will start up immediately as soon as the P1 program has been confirmed (with S4). While the customer service program is in operation any change of state of the analogous signal entries (e.g. filling switch F1) will be acknowledged by the electronic system with a brief blink of the LEDs. The respective program position will be indicated on the display. The water diverter will be activated during the entire program. LED L4 will blink during the entire customer service program procedure.

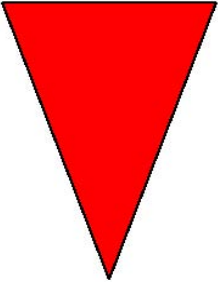
The S3 button can be used to progress to the next program position (exception: during the filling step move on only with the F1 filling switch). Any error which occurs will immediately be shown on the display (heating error after 60 minutes). If several errors occur only the most significant error will be shown. A customer service test program is to be run after every repair in order to determine any other possible errors.

A customer service test program is to be run after every repair in order to determine any other possible errors.



Document No. 58300000108134 ASP EN A	Rev. A	Sheet-No. 1 of 2
Material No. 9000 032 765	GV450/GV 630, G rati, WT	

Error code chart:

Error code	Type of error	Significance
E1	Heating error	 <div style="display: flex; justify-content: space-between; width: 100%;"> high low </div>
E2	NTC error	
E3	Filling error	
E4	Water diverter cannot be positioned	
E5	- - -	
E6	Aqua sensor	
E7	- - -	

Customer service test program sequence

	Function	Temp.	Capacity	Time (s)	Sensor	Abbreviation
1	P			15		P = Pump
2	VF				F1	VF = Pre-fill
3	PA			5		F = Fill (level F1)
4	F + change-over relay/starting winding (SICASYM) + AWT		3.9	X + 10		U = Circulate
5	U + H + ZR	max. 72°		120		H = Heat
6	U + H	60°C				ZR = Dispense detergent
7	U + H + R	max. 72°		120		ZK = Dispense clear rinse agent
8	U + ZK (45cm-wide appliance)			120		R = Regeneration valve
	U + H + ZK (60cm-wide appliance)				FWW = Fill up soft water	
9	AS_KAL_IR + U + H (45cm-wide appliance)					AS_KAL = Calibrate aqua sensor
	AS_KAL_IR (60cm-wide appliance)					AWT = Heat exchanger discharge valve
10	WP			30		WP = Alternating pumping
11	P			45		SP = Sputter pumping
12	FWW + AWT			60		PA = Pause
13	SP			30		X = Refill time calculated
14	P + AWT			30		
0	End					

Document No. 58300000108134 ASP EN A	Rev. A	Sheet-No. 2 of 2
Material No. 9000 032 765	GV450/GV 630, G rati, WT	