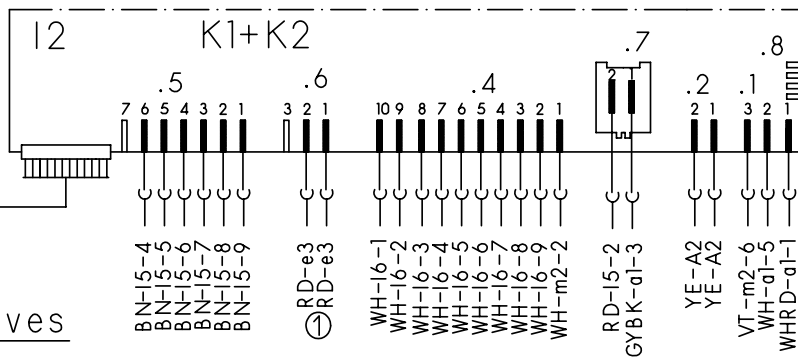
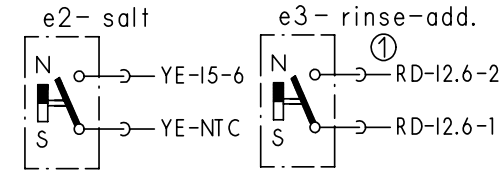


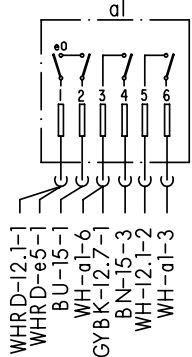
on-off and selector switch



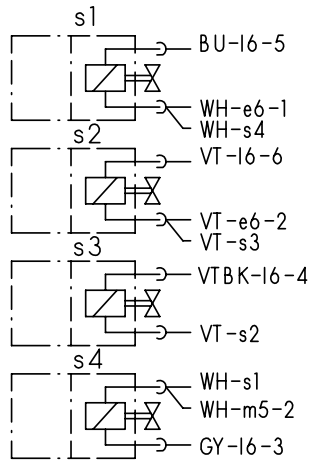
sensor



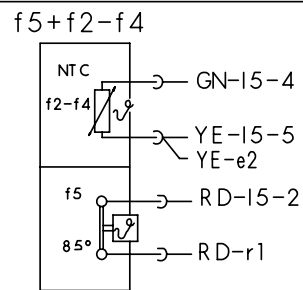
main switch



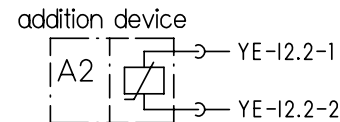
solenoid valves



thermostat + NTC

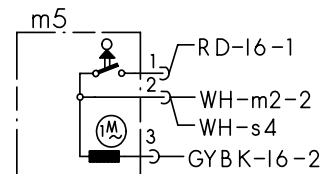


aktuator

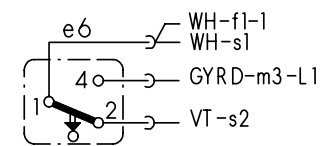


motor

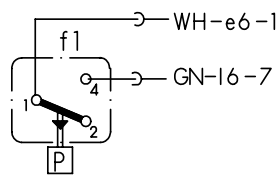
water points



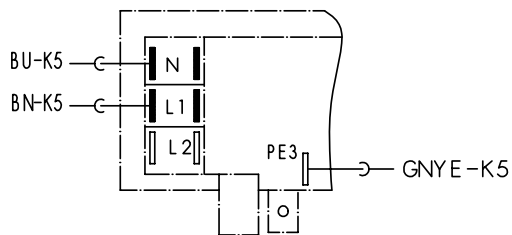
float switch



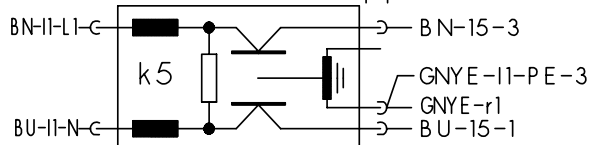
level switch



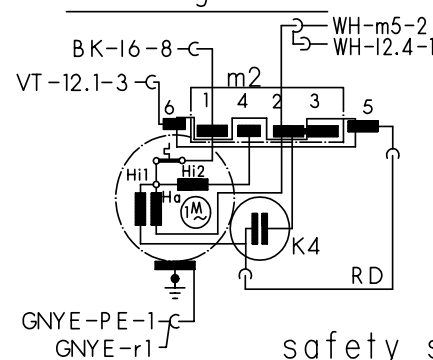
terminal I1 with interference suppression



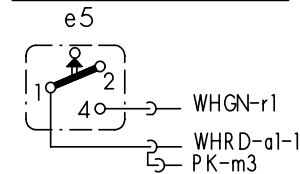
interference suppression



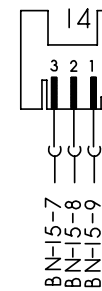
starting Relais



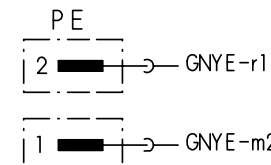
safety switch



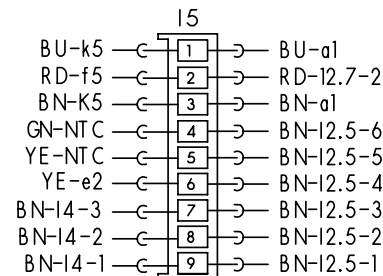
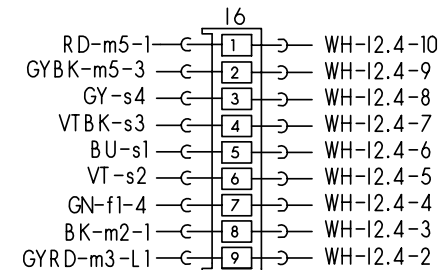
aqua-sensor



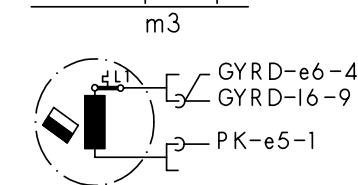
earth terminal



clutch



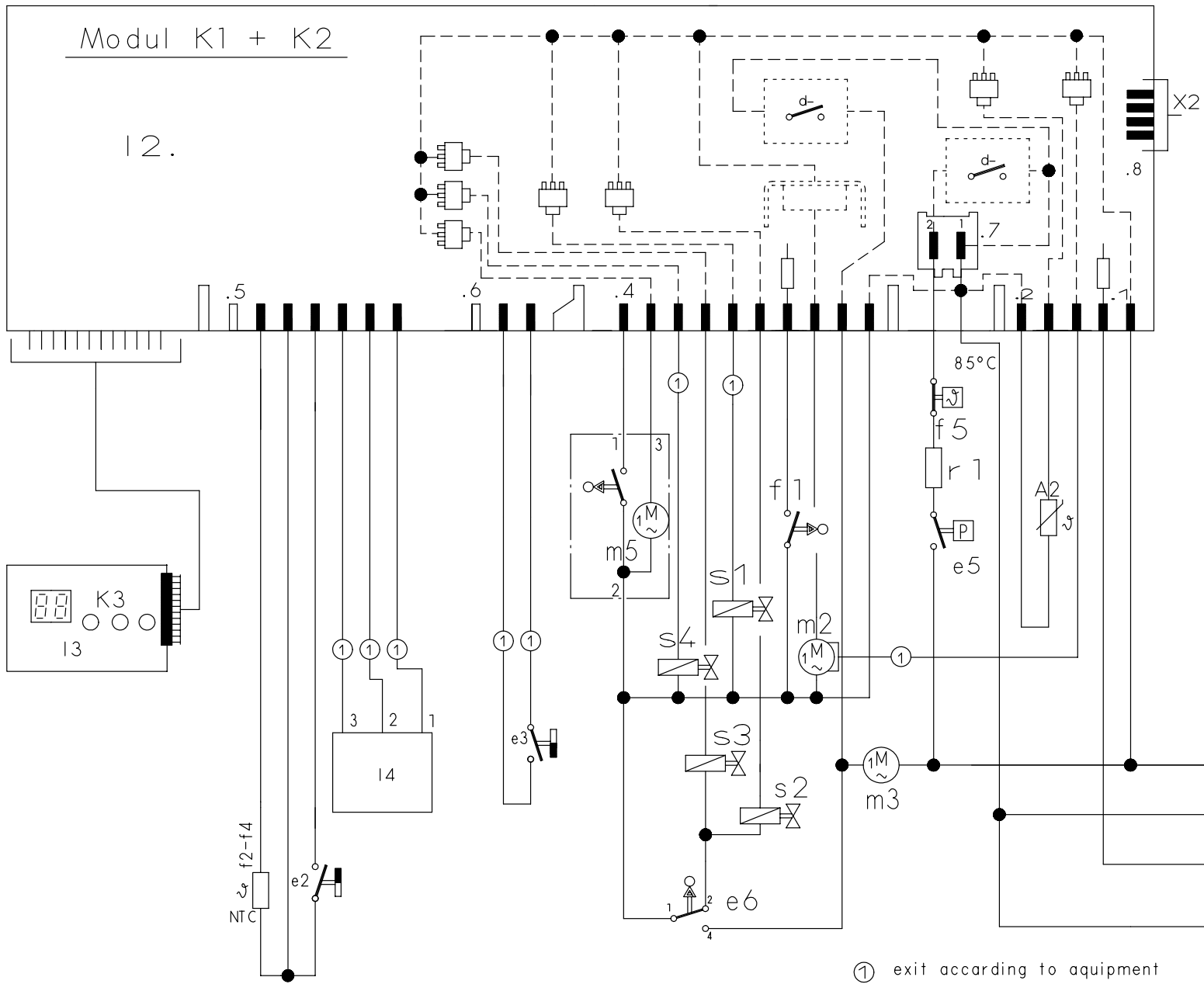
drain pump



① exist according to equipment
(..) previous color



| | |
|------------------------|------------|
| Mat.Nr.: 5600048123 | |
| Ausg.: 09.02 | S0-60/0636 |



- a1 = main switch
- e2/3 = sensors
- e6 = float switch
- f1 = level switch
- NTC = temperature sensor
- f5 = thermostat
- K1 = display modul
- K2 = control modul
- K3 = timer modul
- K5 = interference suppression
- m2 = circulation motor
- m3 = drain motor
- r1 = heating element
- e5 = pressure switch
- s1 = regenerating valve
- s2 = filling valve
- s3 = transfer valve
- A2 = actuator
- x2 = service-connector
- m5 = water switch
- l4 = aqua sensor
- s4 = raw water valve

① exit according to aequipm



| | |
|------------------------|------------|
| Mat. Nr. 5600048124 | |
| Augs.: 02.02 | S0-60/0637 |

Coding instructions for electronics module

After replacing the electronic controls (standard installation), the control must be recoded with the appliance programmes (see table).

Note: In the case of appliances with 5 or 6 programmes/buttons the control must be programmed before the control panel frame is attached.

1. Selection:

Simultaneously press and hold down the S2, S3, S4 and S5 buttons and press the main switch. As long as the S2 to S5 buttons remain depressed, the L2 to L5 LEDs flash.

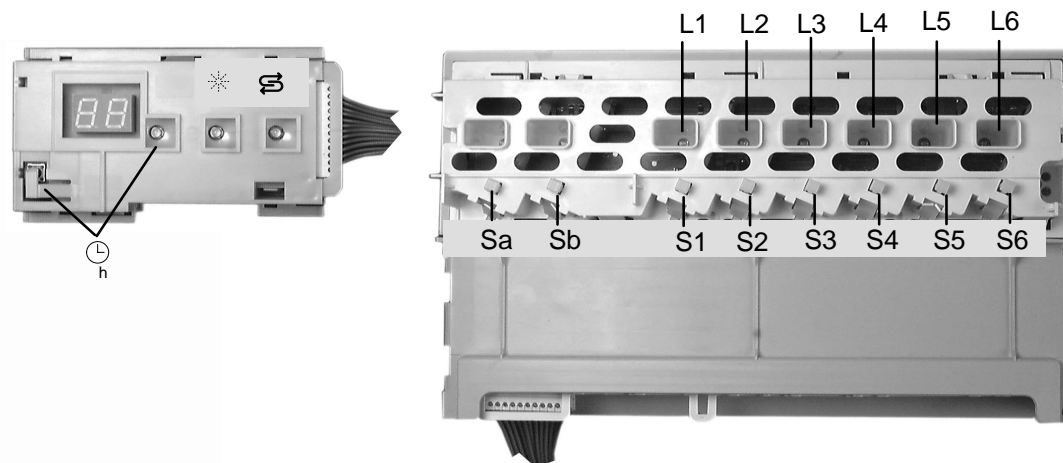
When the S2 to S5 buttons are released, the current coding is displayed (see code table).

2. Selecting the model:

The various model codings can be selected by pressing the S2 button (see table).

3. Storing the coding:

The new model / coding is stored by switching off the appliance.



Code table:

| Sa | Sb | S1 | S2 | S3 | S4 | S5 | S6 | electronic setting of the rinsing agent | Display |
|------------|----------------|---------------|----------------|---------|----------------|----------------|-----------|---|---------|
| Soak | Time reduction | Intensive 70° | auto 55° / 65° | ECO 50° | Gentle 40° | Quick wash 35° | Pre-rinse | – | 0 |
| Soak | Time reduction | Intensive 70° | auto 55° / 65° | ECO 50° | Quick wash 35° | Pre-rinse | | – | 1 |
| Top basket | Bottom basket | Intensive 70° | auto 55° / 65° | ECO 50° | Gentle 40° | Quick wash 35° | Pre-rinse | – | 2 |
| Top basket | Bottom basket | Intensive 70° | auto 55° / 65° | ECO 50° | Quick wash 35° | Pre-rinse | | – | 3 |
| Soak | Time reduction | Intensive 70° | auto 55° / 65° | ECO 50° | Gentle 40° | Quick wash 35° | Pre-rinse | X | 4 |
| Soak | Time reduction | Intensive 70° | auto 55° / 65° | ECO 50° | Quick wash 35° | Pre-rinse | | X | 5 |
| Top basket | Bottom basket | Intensive 70° | auto 55° / 65° | ECO 50° | Gentle 40° | Quick wash 35° | Pre-rinse | X | 6 |
| Top basket | Bottom basket | Intensive 70° | auto 55° / 65° | ECO 50° | Quick wash 35° | Pre-rinse | | X | 7 |
| Top basket | Soak | Intensive 70° | auto 55° / 65° | ECO 50° | Gentle 40° | Quick wash 35° | Pre-rinse | – | 8 |
| Soak | Time reduction | Intensive 70° | auto 55° / 65° | ECO 50° | Quick wash 35° | Pre-rinse | | – | 9 |

Soak: Extra pre-rinse, temperature 55 °C

Time reduction: No standard washing performance, no drying phase

Programm–Symbole:

| | | | | | | | |
|--|----------------|--|----------------|--|-------------------|--|---------------|
| | Intensive 70° | | Quick wash 35° | | Soak | | Top basket |
| | auto 55° / 65° | | Gentle 40° | | Time reduction | | Bottom basket |
| | ECO 50° | | Pre-rinse | | Time preselection | | |



| | |
|--------------|---------------|
| 5600 042 247 | Issued: 01.01 |
| | S0-60/0567 |

Customer service test programme

| Function | Temperature | Capacity | Time (s) | Sensor | Abbreviations |
|----------|-------------|------------|----------|--------|--|
| 1 | P | | 15 | | P = Pump |
| 2 | VF | | | F1 | VF = Prefill |
| 3 | F | 3.9 | | | F = Fill |
| 4 | U + H + ZR | max. 72 °C | 120 | | U = Circulate |
| 5 | U + H | 65 °C | | | H = Heat |
| 6 | U + H + R | max. 72 °C | 120 | | ZR = Dispense detergents |
| 7 | U + ZK | | 120 | | ZK = Dispense rinse aid |
| 8 | AS_KAL_IR | | 0 – 480 | | R = Regenerate |
| 9 | P | | 60 | | FWW = Flush |
| 10 | FWW + AWT | | 60 | | AWT = Outlet |
| 11 | P + AWT | | 30 | | AS_KAL_IR2 = Calibration of turbidity sensor |

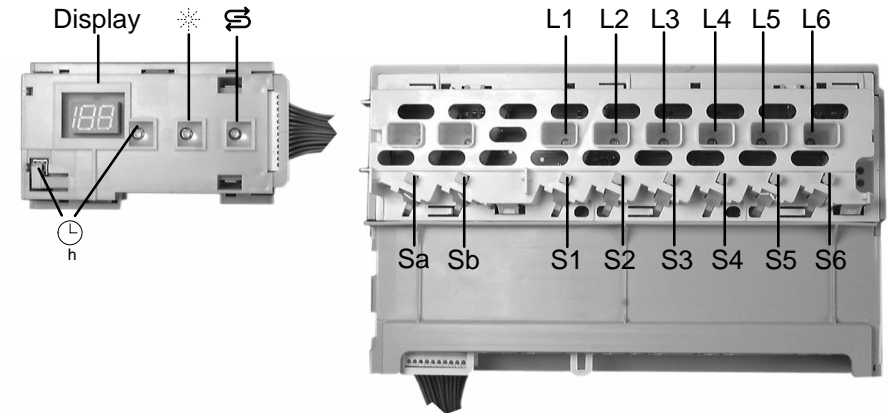
To select the test programme press and hold the S2 and S4 buttons simultaneously and switch on the appliance.

The following displays are indicated on the control panel:

- LEDs L2 and L4 flash.
- As long as the two S2 and S4 buttons remain depressed after the dishwasher has been switched on, an identifier for the model coding is displayed when the overtravel contact has been successfully interrogated (e.g. 20 = Model 0, 21 = Model 1, etc.)
- By pressing one of the buttons, the associated LED lights up.
- By pressing the S3 button, the display and the “low level” indicator LEDs also light up.
- By pressing the timer programming button, an 8h on the segment display and the Minutes LED light up.

By pressing the S2 and S4 buttons, the test programme starts. Timer programming is not possible, the test programme is ended by switching off the appliance via the main switch.

The potential fault code is displayed.



| Fault code | Description |
|------------|---|
| 0 | There is no fault |
| 1 | Fault in the hydro sensor system Note: Display even if there is no sensor! |
| 2 | Heater fault |
| 4 | Filling fault |
| 8 | Fault in NTC system |
| 16 | Water switch cannot be positioned |

If neither of the two special function buttons (Sa/Sb) is selected, alternating rinsing has been set. If the soak/top basket special function is selected, the water switch has been positioned for top basket. If the time reduction/bottom basket special function is selected, the water switch has been positioned for bottom basket.

The next programme step can be selected by pressing the S3 button; (Exception: Select the filling step with the F1 filling switch only). Fault code display is in the customer service test programme only!

If more than one fault is detected, the fault code is added up. (f.ex.: fault code 3 = fault 1 + fault 2)



| | |
|--------------|---------------|
| 5600 047 455 | Issued: 08.02 |
| | S0-60/0699 |