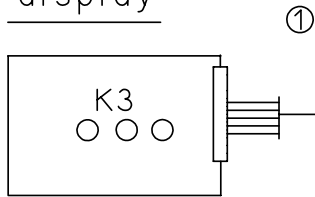
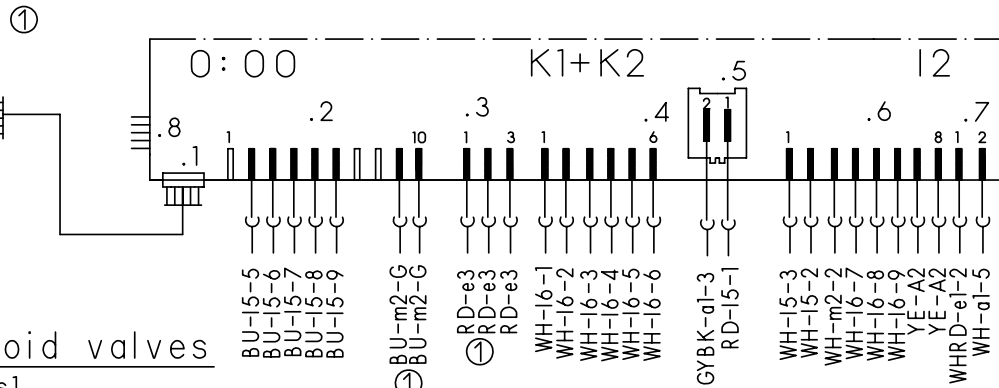


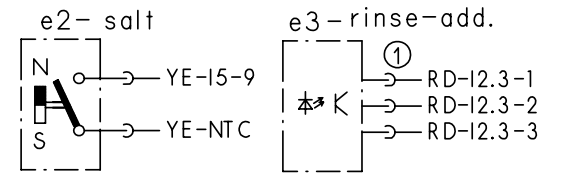
display



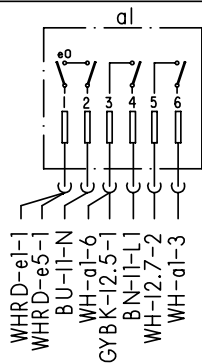
on-off and selector switch



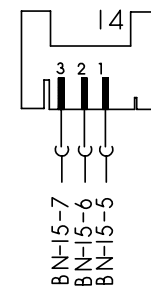
sensor



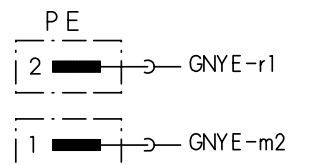
main switch



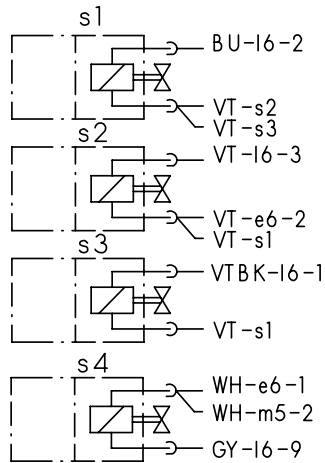
aqua-sensor



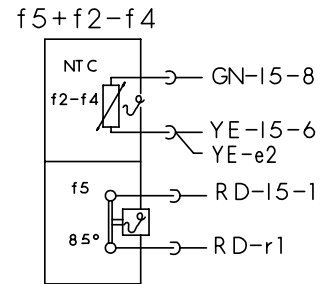
earth terminal



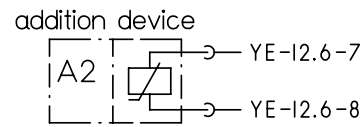
solenoid valves



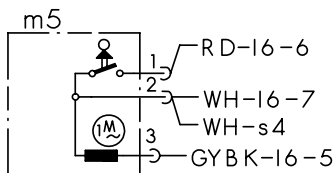
thermostat + NTC



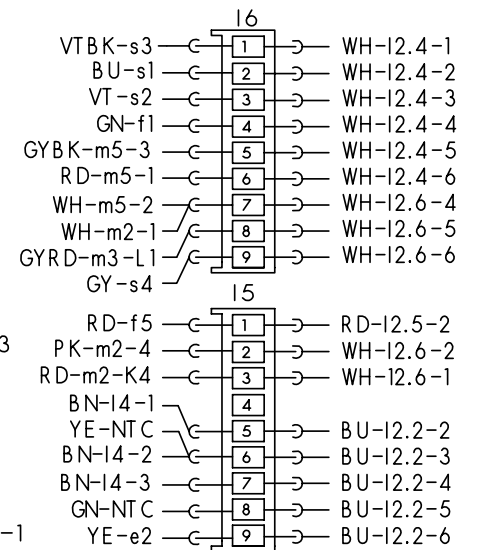
aktuator



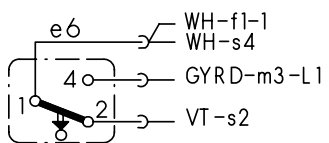
water points



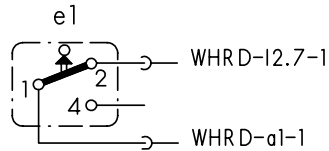
clutch



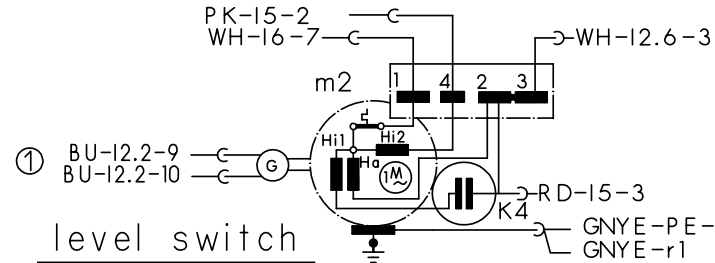
float switch



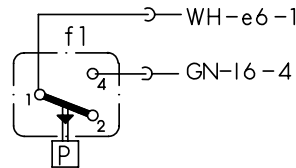
door switch



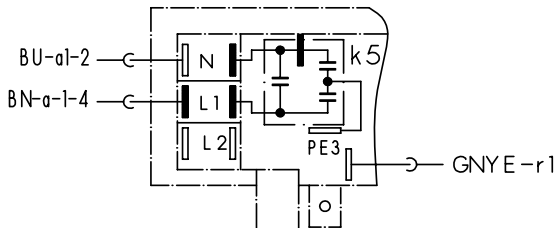
motor



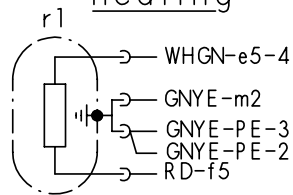
level switch



terminal l1 with interference suppression

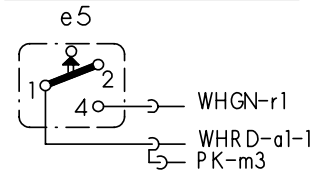


heating

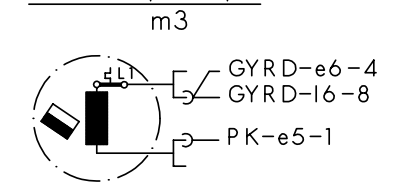


① exist according to equipment
(..) previous color

safety switch



drain pump



| | |
|------------------------|------------|
| Mat.Nr.: 9000002401 | |
| Ausg.: 01.04 | S0-60/0859 |

Customer service test programme

1 Selection:

Switch off the appliance. When the door is closed, hold down two buttons and press the main switch until the model code is displayed.

2 Select special programme:

When the two buttons are released, LED L5 illuminates and LED L6 flashes. P0 is displayed. Press button **S5** to select the required special programme.

- **P0** = Read out fault memory
- **P1** = Customer service test programme
- **P2/P3** = Factory test programmes
- **P4** = Model code

Press S6 to acknowledge the selected programme.

Read out fault memory (P0)

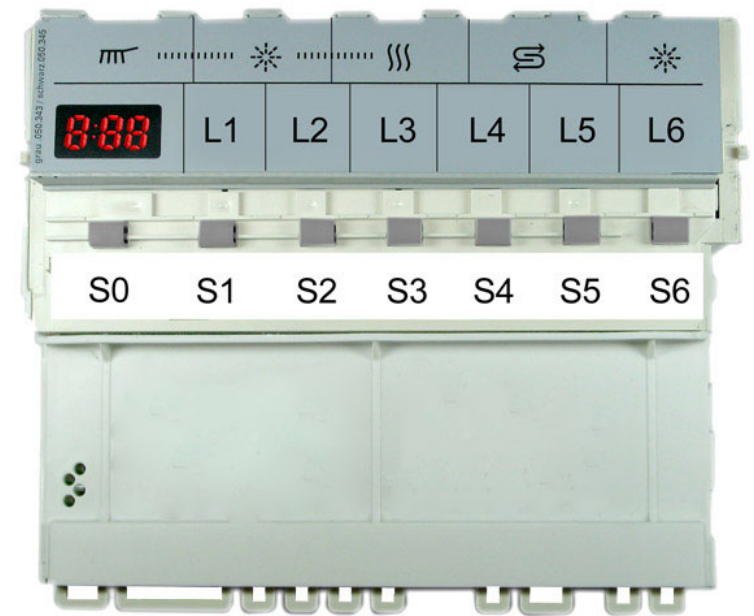
Press button S6 to scan the faults of the last 8 rinse cycles. When the button is pressed, the rinse cycle is displayed (00 – 07). When the button is released, the associated fault (see table) is displayed. If several faults occur in one rinse cycle, only the fault with the highest value is displayed. Press button S5 to start the customer service programme.

Customer service test programme (P1)

When programme P1 is acknowledged (with S6), the customer service programme starts immediately. The particular programme position is indicated on the display. The water points are active in the circulating positions.

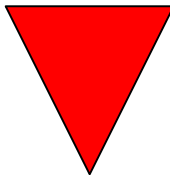
Press button S5 to move to the next programme position.
(Exception: Move to the next filling step by pressing filling switch F1 only)

A fault which has occurred is displayed immediately (heating fault after 60 minutes). If several faults occur, only the fault with the highest value is displayed. Following each repair, a customer service test programme must be run in order to detect any other faults.



| | |
|--------------|----------------|
| 5600.049.712 | Ausg.:10.02 |
| L, WT, GV630 | S0-60/0734 2/1 |

Fault code:

| Fault code | Fault type | Value |
|------------|-----------------------------------|--|
| E0 | Not a fault | <div style="text-align: center;">  <p>High</p> <p>Low</p> </div> |
| E1 | Heating fault | |
| E2 | NTC fault | |
| E3 | Filling fault | |
| E4 | Water points cannot be positioned | |
| E5 | Tachogenerator | |
| E6 | Aqua sensor | |
| E7 | - - - | |

Sequence of the customer service test programme:

| | Function | Temperature | Capacity | Time (s) | Sensor | Symbol |
|------|--|-------------|----------|----------|--------|-----------------------------------|
| S:00 | P | | | 15 | | P = Pump |
| S:01 | VF | | | | F1 | VF = Prefill |
| S:02 | F + AWT + U (circulation after 20s for 100s) | | 3.9 l | | | F = Fill (level F1) |
| S:03 | U + H + ZR | max. 72°C | | 120 | | U = Circulate |
| S:04 | U + H | 60°C | | | | H = Heat |
| S:05 | U + H + R | max. 72°C | | 120 | | ZR = Dispense detergent |
| S:06 | U + ZK | | | 120 | | ZK = Dispense rinse aid |
| S:07 | AS_KAL | | | max. 120 | | R = Regeneration valve |
| S:08 | WP | | | 30 | | FWW = Fill soft water |
| S:09 | P | | | 45 | | AWT = Heat exchanger outlet valve |
| S:10 | FWW + AWT | | | 60 | | AS_KAL= Calibrate Aqua sensor |
| S:11 | SP | | | 30 | | WP = Alternating pumping |
| S:12 | P + AWT | | | 30 | | SP = Intermittent pumping |

| | |
|--------------|----------------|
| 5600.049.712 | Ausg.:10.02 |
| L, WT, GV630 | S0-60/0734 2/2 |