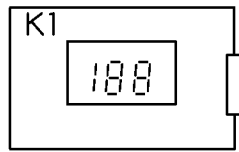
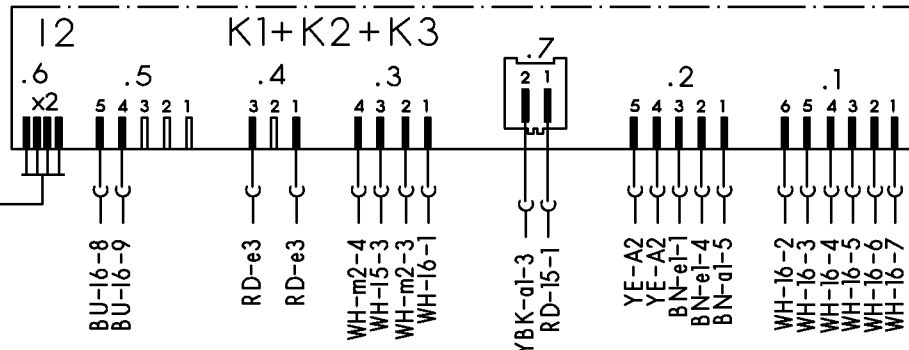


display

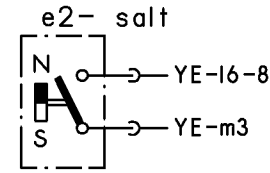


main switch

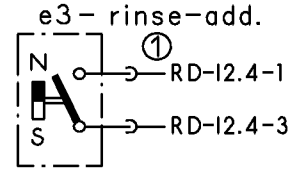
on-off and selector switch



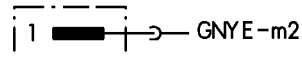
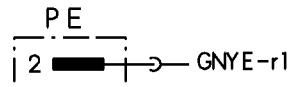
sensor



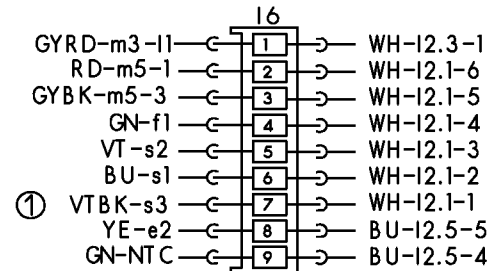
aqua-sensor



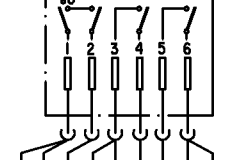
earth terminal



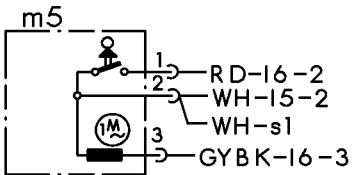
clutch



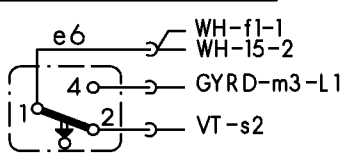
al



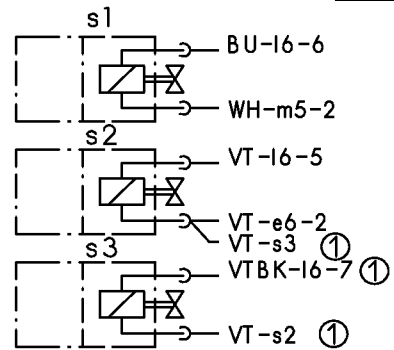
water points



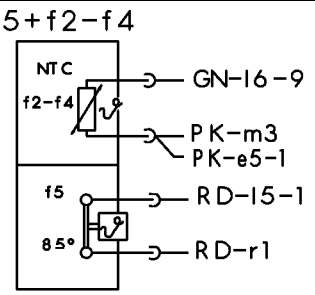
float switch



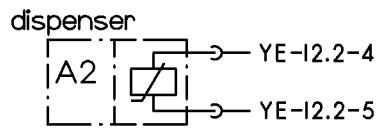
solenoid valves



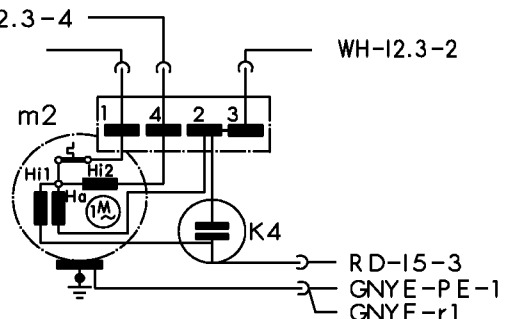
thermostat + NTC



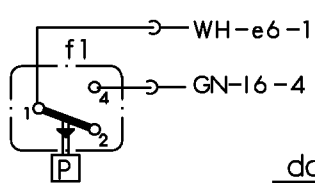
aktuator



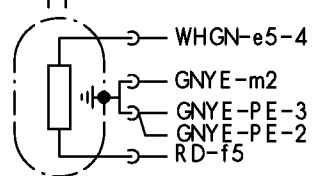
motor



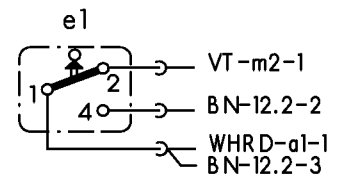
level switch



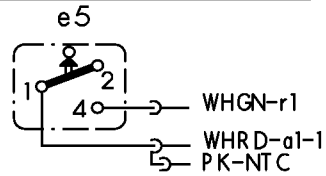
heating



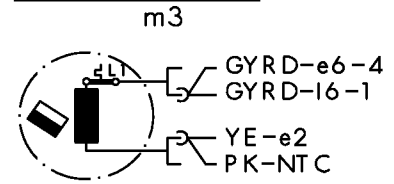
door switch



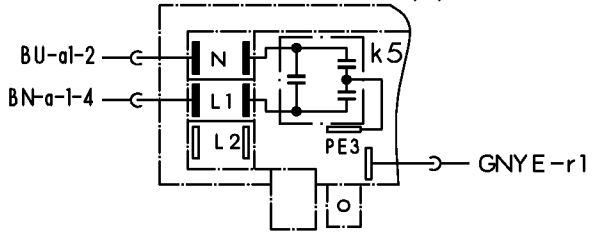
safety switch



drain pump



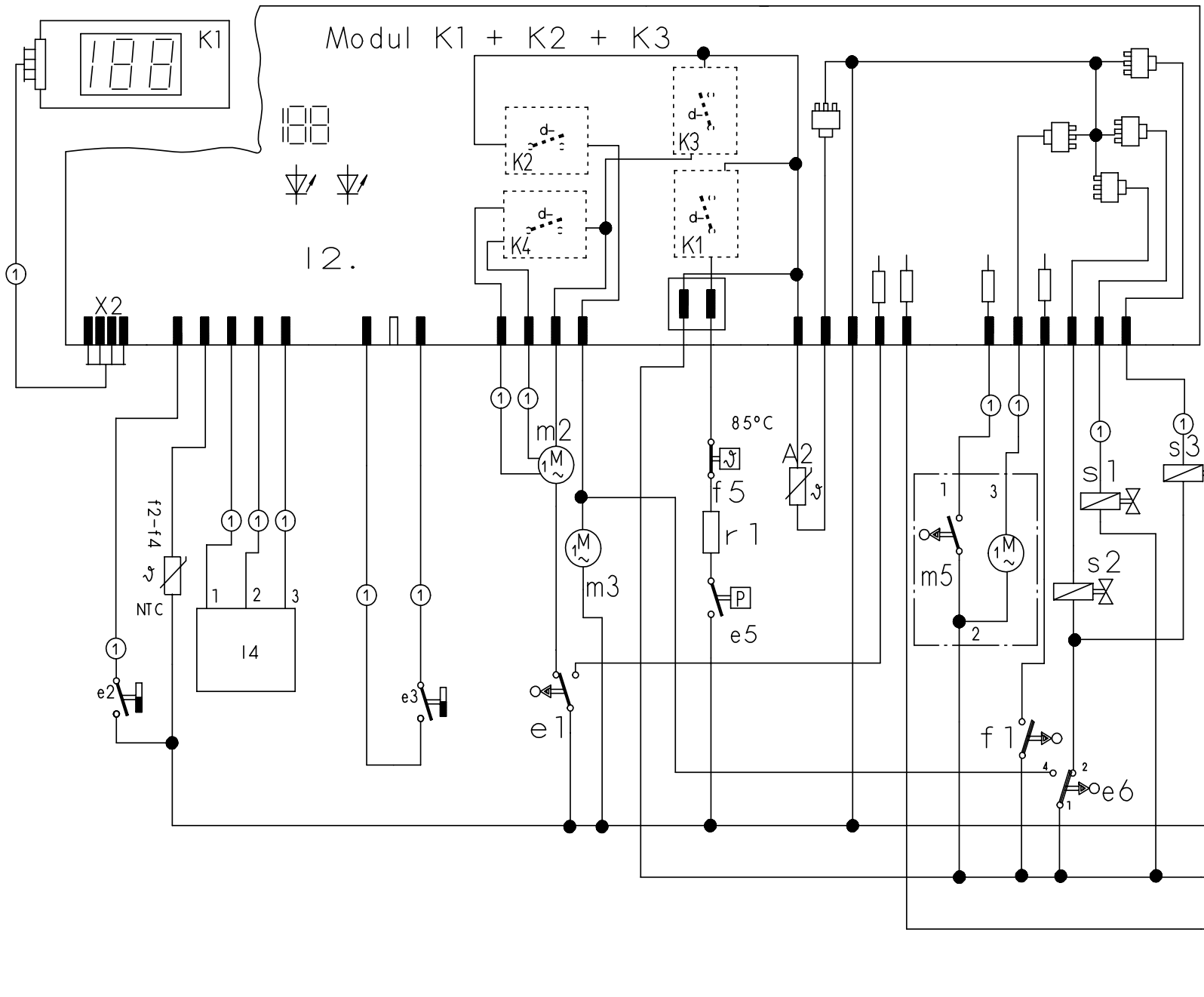
terminal I1 with interference suppression



Ⓛ exist according to equipment
 (..) previous color

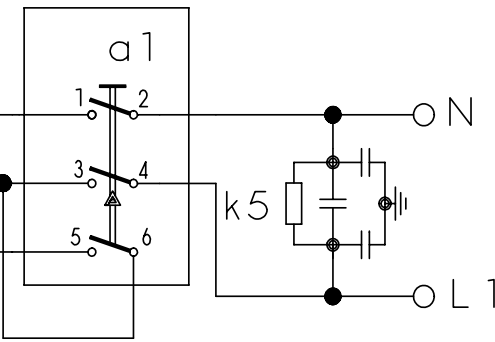


Mat.Nr: 5600046563	
Ausg.: 01.02	S0-60/0638



- a1 = main switch
- e1 = door switch
- e2/3 = reed switch
- e6 = float switch
- f1 = level switch
- NTC = temperature sensor
- f5 = thermostat
- k5 = interference suppression
- K1 = display modul
- K2 = control modul
- K3 = timer modul
- m2 = circulation motor
- m3 = drain motor
- r1 = heating element
- e5 = pressure switch
- s1 = regenerating valve
- s2 = filling valve
- s3 = transfer valve
- A2 = actuator
- x2 = service-connector
- m5 = water switch
- L4 = aqua sensor
- s4 = raw water valve

① exit according to equipmt



Mat. Nr. 5600046311	
Ausg.: 08.01	S0-60/0675



Customer service test programme

Function		Temperature	Capacity	Time (s)	Sensor	Symbol
1	P			15		P = Pump
2	VF				F1	VF = Prefill
3	F		3.4 l			F = Fill (level F1)
4	U + H + ZR	max. 72 °C		120		U = Circulate
5	U + H	max. 72 °C		120		H = Heat
6	U + H + R	60°C				ZR = Dispense detergent
7	U + H + ZK	max. 72°C		120		ZR = Dispense rinse aid
8	WP			30		R = Regeneration valve
9	P			45		FWW = Fill soft water
10	AS_KAL + reversal relay auxiliary winding (SIKASYM) + U			10 + 20		AS_KAL = Calibrate Aqua sensor
11	P			60		AWT = Heat exchanger outlet valve
12	FWW + AWT			60		
13	P + AWT			30		
14	P			30		
15	U + P			15		

1. Selecting the model coding:

When the door is open, hold down two buttons and press the main switch.

As long as the buttons remain depressed, the model coding is displayed via LEDs L2 to L4.

2. Select special programme:

When the two buttons are released, LED L3 illuminates and LED L4 flashes

Keep pressing S3 until LED L4 illuminates. Then press button S4 to activate the customer service special programme.

3. Starting the programme:

The customer service programme is started by closing the door.

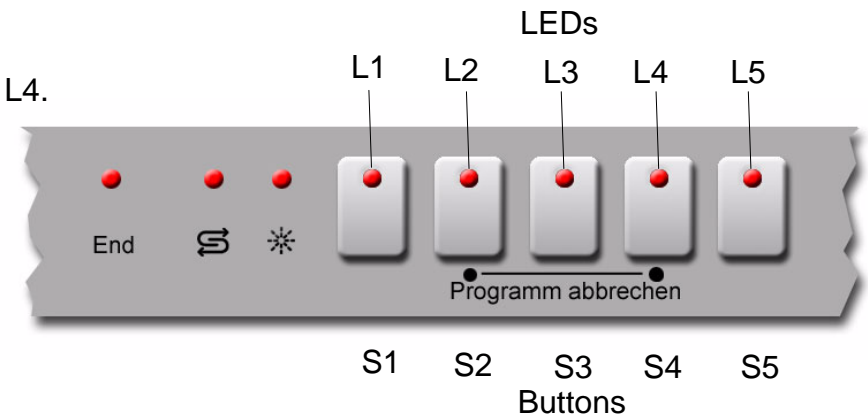
Jump to the next programme position by pressing button S3.

(Exception: Move to the next filling step by pressing filling switch F1 only).

A fault which has occurred is displayed immediately via the programme sequence LEDs.

If several faults occur, only the fault with the highest value is displayed.

Following each repair, a customer service programme must be run in order to detect any other faults.



LED L2	LED L3	LED L4	Fault
○	○	●	Heating fault
○	●	○	NTC fault
○	●	●	Filling fault
●	○	○	Water points position
●	○	●	Tachogenerator fault
●	●	○	Aqua sensor fault
●	●	●	Not assigned



5600 049 436	Edition: 10.02
J, WW, WT, GV450	S0-60/0710