

Gebruiks-  
aanwijzing

User manual

Notice  
d'utilisation

Benutzer-  
information

Koel-vries-  
combinatie

Fridge-Freezer

Réfrigérateur-  
congélateur

Kühl-Gefrier-  
schrank



# Contents

Safety information	19	Care and cleaning	25
Control panel	21	What to do if...	26
First use	23	Technical data	28
Daily Use	23	Installation	29
Helpful hints and tips	25	Environmental concerns	34

Subject to change without notice



## Safety information

In the interest of your safety and to ensure the correct use, before installing and first using the appliance, read this user manual carefully, including its hints and warnings. To avoid unnecessary mistakes and accidents, it is important to ensure that all people using the appliance are thoroughly familiar with its operation and safety features. Save these instructions and make sure that they remain with the appliance if it is moved or sold, so that everyone using it through its life will be properly informed on appliance use and safety.

For the safety of life and property keep the precautions of these user's instructions as the manufacturer is not responsible for damages caused by omission.

### Children and vulnerable people safety

- This appliance is not intended for use by persons (including children) with reduced physical, sensory or mental capabilities, or lack of experience and knowledge, unless they have been given supervision or instruction concerning use of the appliance by a person responsible for their safety.  
Children should be supervised to ensure that they do not play with the appliance.
- Keep all packaging well away from children. There is risk of suffocation.
- If you are discarding the appliance pull the plug out of the socket, cut the connection cable (as close to the appliance as you can) and remove the door to prevent playing children to suffer electric shock or to close themselves into it.
- If this appliance featuring magnetic door seals is to replace an older appliance having a spring lock (latch) on the door or lid, be sure to make that spring lock unusable before you discard the old appliance.

ance. This will prevent it from becoming a death trap for a child.

### General safety



#### Warning!

Keep ventilation openings, in the appliance enclosure or in the built-in structure, clear of obstruction.

- The appliance is intended for keeping foodstuff and/or beverages in a normal household as explained in this instruction booklet.
- Do not use a mechanical device or any artificial means to speed up the thawing process.
- Do not use other electrical appliances (such as ice cream makers) inside of refrigerating appliances, unless they are approved for this purpose by the manufacturer.
- Do not damage the refrigerant circuit.
- The refrigerant isobutane (R600a) is contained within the refrigerant circuit of the appliance, a natural gas with a high level of environmental compatibility, which is nevertheless flammable.

During transportation and installation of the appliance, be certain that none of the components of the refrigerant circuit become damaged.

If the refrigerant circuit should become damaged:

- avoid open flames and sources of ignition
- thoroughly ventilate the room in which the appliance is situated
- It is dangerous to alter the specifications or modify this product in any way. Any damage to the cord may cause a short-circuit, fire and/or electric shock.





**Warning!** Any electrical component (power cord, plug, compressor) must be replaced by a certified service agent or qualified service personnel to avoid hazard.

1. Power cord must not be lengthened.
  2. Make sure that the power plug is not squashed or damaged by the back of the appliance. A squashed or damaged power plug may overheat and cause a fire.
  3. Make sure that you can come to the mains plug of the appliance.
  4. Do not pull the mains cable.
  5. If the power plug socket is loose, do not insert the power plug. There is a risk of electric shock or fire.
  6. You must not operate the appliance without the lamp cover<sup>6)</sup> of interior lighting.
- This appliance is heavy. Care should be taken when moving it.
  - Do not remove nor touch items from the freezer compartment if your hands are damp/wet, as this could cause skin abrasions or frost/freezer burns.
  - Avoid prolonged exposure of the appliance to direct sunlight.
  - Bulb lamps<sup>7)</sup> used in this appliance are special purpose lamps selected for household appliances use only. They are not suitable for household room illumination.

### Daily Use

- Do not put hot pot on the plastic parts in the appliance.
- Do not store flammable gas and liquid in the appliance, because they may explode.
- Do not place food products directly against the air outlet on the rear wall.<sup>8)</sup>
- Frozen food must not be re-frozen once it has been thawed out.
- Store pre-packed frozen food in accordance with the frozen food manufacturer's instructions.
- Appliance's manufacturers storage recommendations should be strictly adhered to. Refer to relevant instructions.

- Do not place carbonated or fizzy drinks in the freezer compartment as it creates pressure on the container, which may cause it to explode, resulting in damage to the appliance.
- Ice lollies can cause frost burns if consumed straight from the appliance.

### Care and cleaning

- Before maintenance, switch off the appliance and disconnect the mains plug from the mains socket.
- Do not clean the appliance with metal objects.
- Do not use sharp objects to remove frost from the appliance. Use a plastic scraper.
- Regularly examine the drain in the refrigerator for defrosted water. If necessary, clean the drain. If the drain is blocked, water will collect in the bottom of the appliance.

### Installation

**Important!** For electrical connection carefully follow the instructions given in specific paragraphs.

- Unpack the appliance and check if there are damages on it. Do not connect the appliance if it is damaged. Report possible damages immediately to the place you bought it. In that case retain packing.
- It is advisable to wait at least four hours before connecting the appliance to allow the oil to flow back in the compressor.
- Adequate air circulation should be around the appliance, lacking this leads to overheating. To achieve sufficient ventilation follow the instructions relevant to installation.
- Wherever possible the back of the product should be against a wall to avoid touching or catching warm parts (compressor, condenser) to prevent possible burn.
- The appliance must not be located close to radiators or cookers.
- Make sure that the mains plug is accessible after the installation of the appliance.
- Connect to potable water supply only.<sup>9)</sup>

6) If the lamp cover is foreseen.

7) If the lamp is foreseen.

8) If the appliance is Frost Free.

9) If a water connection is foreseen.



## Service

- Any electrical work required to do the servicing of the appliance should be carried out by a qualified electrician or competent person.
- This product must be serviced by an authorized Service Centre, and only genuine spare parts must be used.

## Environment Protection



This appliance does not contain gasses which could damage the ozone layer,

in either its refrigerant circuit or insulation materials. The appliance shall not be discarded together with the urban refuse and rubbish. The insulation foam contains flammable gases: the appliance shall be disposed according to the applicable regulations to obtain from your local authorities. Avoid damaging the cooling unit, especially at the rear near the heat exchanger. The materials used on this appliance marked by the symbol are recyclable.

## Control panel

### Freezer Control panel



- Pilot light
- ON/OFF switch
- Temperature regulator (warmest)
- Temperature indicator
- Temperature regulator (coldest)
- Alarm light
- Alarm reset switch
- Fast Freezing light
- Fast Freezing switch

### Switching on

Insert the plug into the wall socket.  
Press the ON/OFF switch .  
The Pilot Light will light up.

### Switching off

The freezer is shut off by pressing the ON/OFF switch until the Pilot light and the Temperature indicator switched off.

### Temperature regulation

The temperature can be adjusted between -15°C and -24°C.

By pressing the Temperature regulators , the current temperature setting flashes on the Temperature indicator. It is possible to modify the setting temperature only with flashed indicator. To set a warmer temperature, press warmest Temperature regulator . To set a colder temperature, press coldest Temperature regulator. The Tem-

perature indicator displays the newly selected temperature.

The newly selected-temperature will be reached after 24 hours.



### Caution!

During the stability period by the first starting the temperature inside compartment can not correspond to the temperature setting.

### Temperature indicator

During normal functioning the Temperature indicator shows the temperature setting.

**Important!** Difference between the temperature inside the compartment and temperature setting is normal. Especially when:

- a new setting has recently been selected.
- the door has been left open for a long time.
- warm food has been placed in the compartment.

### Excessive temperature alarm

In the event of an abnormal temperature rise inside the freezer (e.g. power cut) Alarm light will start to flash and a buzzer will sound.



After the temperature has returned to normal, the Alarm light will continue to flash, although the buzzer has stopped.

When the Alarm reset switch is pressed, the warmest temperature reached in the compartment flashes on the Temperature indicator .

If the power has been off for a long time, frozen food should be consumed as quickly as possible, or cooked and then re-frozen.

### Fast Freezing function

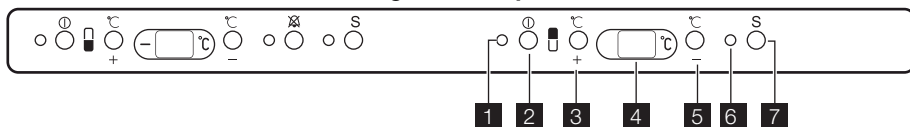
You can activate the Fast Freezing function by pressing the Fast Freezing switch.

The Fast Freezing light will light up.

**Important!** This function stops automatically after 52 hours.

It is possible to deactivate the function at any time by pressing Fast Freezing switch. The Fast Freezing light will switch off.

### Fridge Control panel



1. Pilot light
2. ON/OFF switch
3. Temperature regulator (warmest)
4. Temperature indicator
5. Temperature regulator (coldest)
6. Supercool light
7. Supercool switch

### Switching on

Insert the plug into the wall socket.

Press the ON/OFF switch .

The Pilot Light will light up.

### Switching off

The fridge is shut off by pressing the ON/OFF switch until the Pilot light and the Temperature indicator switched off.

### Temperature regulation

The temperature can be adjusted between +2°C and +8°C.

By pressing the Temperature regulators, the current temperature setting flashes on the Temperature indicator. It is possible to modify the setting temperature only with flashed indicator. To set a warmer temperature, press warmest Temperature regulator. To set a colder temperature, press coldest Temperature regulator. The Temperature indicator displays the newly selected temperature.

The newly selected-temperature will be reached after 24 hours.

### Caution!

During the stability period by the first starting the temperature inside compartment can not correspond to the temperature setting.

### Temperature indicator

During normal functioning the Temperature indicator shows the temperature setting.

**Important!** Difference between the temperature inside the compartment and temperature setting is normal. Especially when:

- a new setting has recently been selected.
- the door has been left open for a long time.
- warm food has been placed in the compartment.

### Supercool function

The maximum performance is obtained by setting the Supercool function. It's recommended when loading large quantities of food.

You can activate the Supercool function by pressing the Supercool switch.

The Supercool light will light up.

**Important!** The internal temperature goes down to +2°C.

After about 6 hours the Supercool function switches off automatically.



## First use

### Cleaning the interior

Before using the appliance for the first time, wash the interior and all internal accessories with lukewarm water and some neutral soap so as to remove the typical smell of a brand-new product, then dry thoroughly.

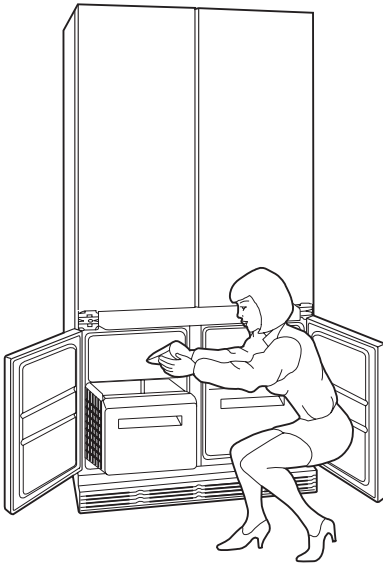
## Daily Use

### Freezing fresh food

The freezer compartment is suitable for freezing fresh food and storing frozen and deep-frozen food for a long time. Place the fresh food to be frozen in the left compartments, and, once frozen, moved to the storage baskets.

The maximum amount of food that can be frozen in 24 hours is specified on the **rating plate**, a label located on the inside of the appliance.

The freezing process lasts 24 hours: during this period do not add other food to be frozen.



**Important!** When use the Fast Freezing function:

**Important!** Do not use detergents or abrasive powders, as these will damage the finish.

about 6 hours before	Introducing small quantities of fresh food (about 5 kg)
about 24 hours before	Introducing the maximum quantity of food (see rating plate)
not needed	Introducing frozen food
not needed	Introducing small quantities of fresh food daily 2 kg maximum

### Storage of frozen food

When first starting-up or after a period out of use, before putting the products in the compartment let the appliance run at least 2 hours on the higher settings.

**Important!** In the event of accidental defrosting, for example due to a power failure, if the power has been off for longer than the value shown in the technical characteristics chart under "rising time", the defrosted food must be consumed quickly or cooked immediately and then re-frozen (after cooling).

### Ice-cube production

This appliance is equipped with one or more trays for the production of ice-cubes. Fill these trays with water, then put them in the freezer compartment.

**Important!** Do not use metallic instruments to remove the trays from the freezer.

### Thawing

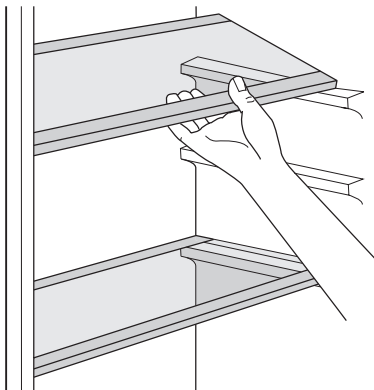
Deep-frozen or frozen food, prior to being used, can be thawed in the refrigerator compartment or at room temperature, depending on the time available for this operation.

Small pieces may even be cooked still frozen, directly from the freezer: in this case, cooking will take longer.



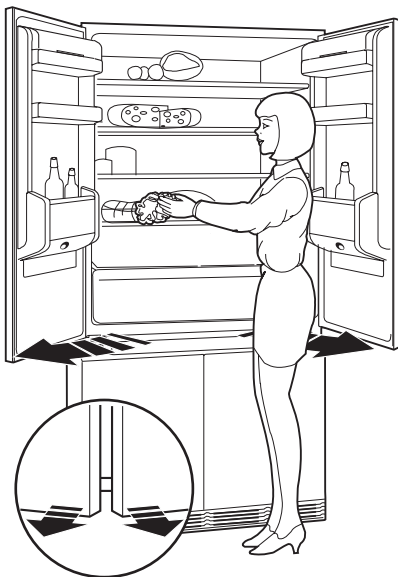
### Movable shelves

The walls of the refrigerator are equipped with a series of runners so that the shelves can be positioned as desired. For better use of space, the front half-shelves can lie over the rear ones.



### Fridge Doors

For proper opening and closing, it is advisable to act on both doors simultaneously (as shown in the figure).



### Superchill compartment

The temperature in this compartment (from 0°C to +3°C) is kept constant by a special sensor. No adjustment is needed.

Products stored in this compartment will keep fresh and in peak condition. It is advisable to wrap foods in aluminium foil or plastic film.

Drinks can be cooled quickly in this compartment without any danger of freezing. Make sure that the drawers are fully closed before shutting the door.





## Helpful hints and tips

### Hints for fresh food refrigeration

To obtain the best performance:

- do not store warm food or evaporating liquids in the refrigerator
- do cover or wrap the food, particularly if it has a strong flavour
- position food so that air can circulate freely around it

### Hints for refrigeration

Useful hints:

Meat (all types) : wrap in polythene bags and place on the glass shelf above the vegetable drawer.

For safety, store in this way only one or two days at the most.

Cooked foods, cold dishes, etc...: these should be covered and may be placed on any shelf.

Fruit and vegetables: these should be thoroughly cleaned and placed in the special drawer(s) provided.

Butter and cheese: these should be placed in special airtight containers or wrapped in aluminium foil or polythene bags to exclude as much air as possible.

Milk bottles: these should have a cap and should be stored in the bottle rack on the door.

Bananas, potatoes, onions and garlic, if not packed, must not be kept in the refrigerator.

### Hints for freezing

To help you make the most of the freezing process, here are some important hints:

- the maximum quantity of food which can be frozen in 24 hrs. is shown on the rating plate;
- the freezing process takes 24 hours. No further food to be frozen should be added during this period;

- only freeze top quality, fresh and thoroughly cleaned, foodstuffs;
- prepare food in small portions to enable it to be rapidly and completely frozen and to make it possible subsequently to thaw only the quantity required;
- wrap up the food in aluminium foil or polythene and make sure that the packages are airtight;
- do not allow fresh, unfrozen food to touch food which is already frozen, thus avoiding a rise in temperature of the latter;
- lean foods store better and longer than fatty ones; salt reduces the storage life of food;
- water ices, if consumed immediately after removal from the freezer compartment, can possibly cause the skin to be freeze burnt;
- it is advisable to show the freezing in date on each individual pack to enable you to keep tab of the storage time.

### Hints for storage of frozen food

To obtain the best performance from this appliance, you should:

- make sure that the commercially frozen foodstuffs were adequately stored by the retailer;
- be sure that frozen foodstuffs are transferred from the foodstore to the freezer in the shortest possible time;
- not open the door frequently or leave it open longer than absolutely necessary.
- Once defrosted, food deteriorates rapidly and cannot be refrozen.
- Do not exceed the storage period indicated by the food manufacturer.

## Care and cleaning



**Caution!** Unplug the appliance before carrying out any maintenance operation.



This appliance contains hydrocarbons in its cooling unit; maintenance and re-

charging must therefore only be carried out by authorized technicians.

### Periodic cleaning

The equipment has to be cleaned regularly:

- clean the inside and accessories with lukewarm water and some neutral soap.



- regularly check the door seals and wipe clean to ensure they are clean and free from debris.
- rinse and dry thoroughly.

**Important!** Do not pull, move or damage any pipes and/or cables inside the cabinet. Never use detergents, abrasive powders, highly perfumed cleaning products or wax polishes to clean the interior as this will damage the surface and leave a strong odour.

Clean the condenser (black grill) and the compressor at the back of the appliance with a brush. This operation will improve the performance of the appliance and save electricity consumption.

**Important!** Take care of not to damage the cooling system.

Many proprietary kitchen surface cleaners contain chemicals that can attack/damage the plastics used in this appliance. For this reason it is recommended that the outer casing of this appliance is only cleaned with warm water with a little washing-up liquid added.

After cleaning, reconnect the equipment to the mains supply.

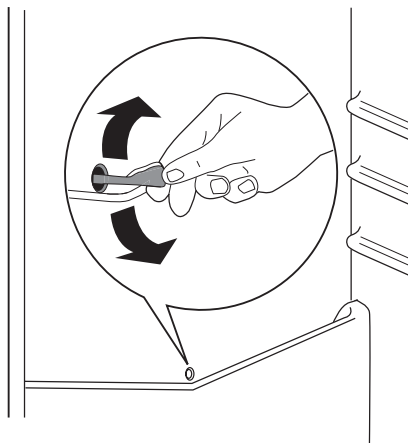
### Defrosting of the refrigerator

Frost is automatically eliminated from the evaporator of the refrigerator compartment every time the motor compressor stops, during normal use. The defrost water drains out through a trough into a special container at the back of the appliance, over the motor compressor, where it evaporates. It is important to periodically clean the defrost water drain hole in the middle of the refrigerator compartment channel to prevent the water overflowing and dripping onto the food inside. Use the special cleaner provided, which you will find already inserted into the drain hole.

### What to do if...

**Warning!** Before troubleshooting, disconnect the mains plug from the mains socket. Only a qualified electrician or competent person must do the troubleshooting that is not in this manual.

<sup>10)</sup> If foreseen.



### Defrosting of the freezer

The freezer compartment of this model, on the other hand, is a "no frost" type. This means that there is no buildup of frost when it is in operation, neither on the internal walls nor on the foods.

The absence of frost is due to the continuous circulation of cold air inside the compartment, driven by an automatically controlled fan.

### Periods of non-operation

When the appliance is not in use for long periods, take the following precautions:

- **disconnect the appliance from electricity supply**
- remove all food
- defrost<sup>10)</sup> and clean the appliance and all accessories
- leave the door/doors ajar to prevent unpleasant smells.

If the cabinet will be kept on, ask somebody to check it once in a while to prevent the food inside from spoiling in case of a power failure.

**Important!** There are some sounds during normal use (compressor, refrigerant circulation).



Problem	Possible cause	Solution
<b>The appliance does not operate. The lamp does not operate.</b>	The appliance is switched off.	Switch on the appliance.
	The mains plug is not connected to the mains socket correctly.	Connect the mains plug to the mains socket correctly.
	The appliance has no power. There is no voltage in the mains socket.	Connect a different electrical appliance to the mains socket. Contact a qualified electrician.
<b>The Alarm light flashes.</b>	The temperature in the freezer is too high.	Refer to "Excessive Temperature Alarm"
<b>The lamp does not work.</b>	The lamp is in stand-by.	Close and open the door.
	The lamp is defective.	Refer to "Replacing the lamp".
<b>The compressor operates continually.</b>	The temperature is not set correctly.	Set a higher temperature.
	The door is not closed correctly.	Refer to "Closing the door".
	The door has been opened too frequently.	Do not keep the door open longer than necessary.
	The product temperature is too high.	Let the product temperature decrease to room temperature before storage.
	The room temperature is too high.	Decrease the room temperature.
<b>Water flows on the rear plate of the refrigerator.</b>	During the automatic defrosting process, frost defrosts on the rear plate.	This is correct.
<b>Water flows into the refrigerator.</b>	The water outlet is clogged.	Clean the water outlet.
	Products prevent that water flows into the water collector.	Make sure that products do not touch the rear plate.
<b>Water flows on the ground.</b>	The melting water outlet does not flow in the evaporative tray above the compressor.	Attach the melting water outlet to the evaporative tray.
<b>The temperature in the appliance is too low.</b>	The temperature regulator is not set correctly.	Set a higher temperature.
<b>The temperature in the appliance is too high.</b>	The temperature regulator is not set correctly.	Set a lower temperature.
	The door is not closed correctly.	Refer to "Closing the door".
	The product temperature is too high.	Let the product temperature decrease to room temperature before storage.
	Many products are stored at the same time.	Store less products at the same time.
<b>The temperature in the refrigerator is too high.</b>	There is no cold air circulation in the appliance.	Make sure that there is cold air circulation in the appliance.
<b>The temperature in the freezer is too high.</b>	Products are too near to each other.	Store products so that there is cold air circulation.
<b>There is too much frost.</b>	Food is not wrapped correctly.	Wrap the food correctly.



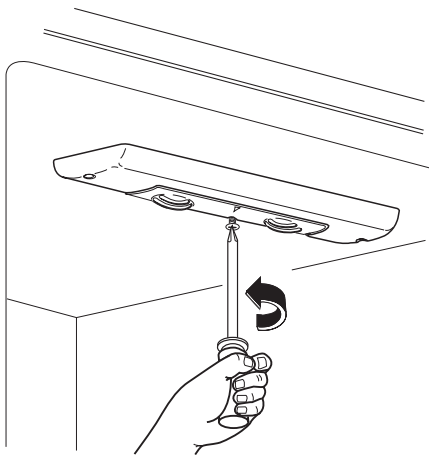
Problem	Possible cause	Solution
	The door is not closed correctly.	Refer to "Closing the door".

**Replacing the lamp**

1. Disconnect the mains plug from the mains socket.
2. Remove the lamp cover (refer to the illustration).
3. Replace the used lamp with a new lamp of the same power and specifically designed for household appliances. (the maximum power is shown on the lamp cover).
4. Connect the mains plug to the mains socket.
5. Open the door. Make sure that the lamp comes on.

**Closing the door**

1. Clean the door gaskets.
2. If necessary, adjust the door. Refer to "Installation".
3. If necessary, replace the defective door gaskets. Contact the Service Center.



**Technical data**

Dimension of the recess		
	Height	1900 mm
	Width	860 mm
	Depth	550 mm
Rising Time		14 h
Voltage		230-240 V
Frequency		50 Hz

The technical information are situated in the rating plate on the internal left side of the appliance and in the energy label.



# Installation

## Positioning

Install this appliance at a location where the ambient temperature corresponds to the climate class indicated on the rating plate of the appliance:

Climate class	Ambient temperature
SN	+10°C to + 32°C
N	+16°C to + 32°C
ST	+16°C to + 38°C
T	+16°C to + 43°C

## Electrical connection

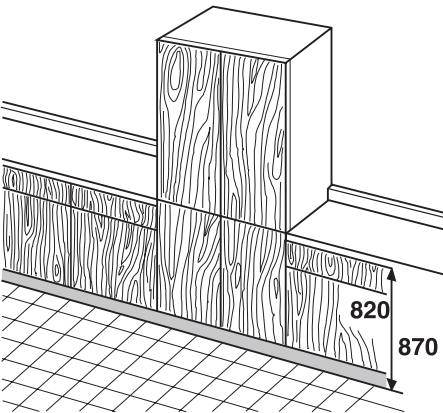
Before plugging in, ensure that the voltage and frequency shown on the rating plate correspond to your domestic power supply. The appliance must be earthed. The power supply cable plug is provided with a contact for this purpose. If the domestic power supply socket is not earthed, connect the appliance to a separate earth in compliance with current regulations, consulting a qualified electrician.

The manufacturer declines all responsibility if the above safety precautions are not observed.

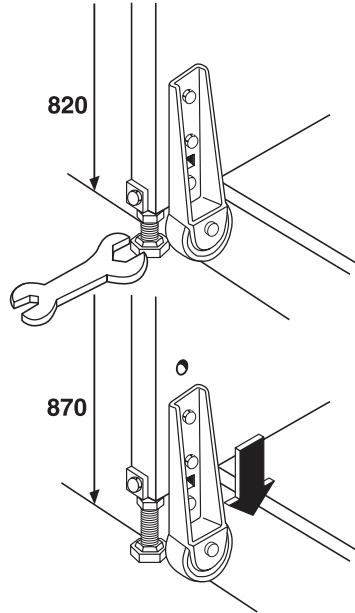
This appliance complies with the E.E.C. Directives.

## Height adjustment

The height of the appliance is adjustable from 820 to 870 mm to fine up with existing kitchen units.



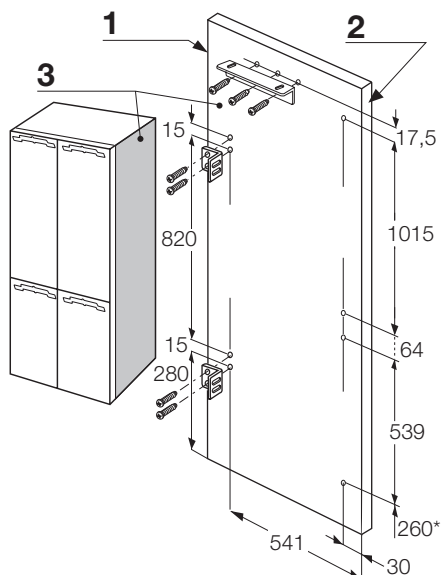
Before installing the appliance between units, adjust the height of the feet and rear wheels. The wheels are factory set for a height of 820 mm. To align the appliance to a height of 870 mm, raise it by adjusting the feet with a spanner, then remove the wheels and refit them in the lowest position.



## Fitting the side panels

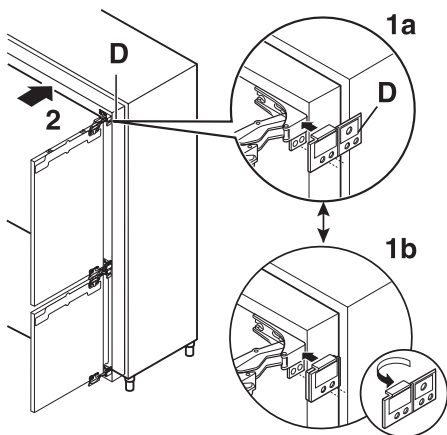
- Fit the brackets onto the panels in the positions shown in the diagram. The dimension of 260\* mm is allowed for fitting a 100 mm plinth below the panel. For different plinth sizes, increase the dimension of 260\* mm accordingly.





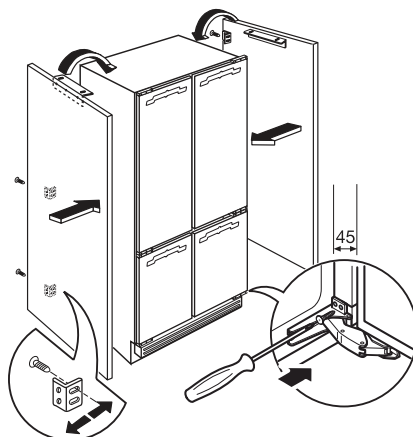
- 1 Rear edge  
2 Front edge  
3 Right hand side panel

- Apply spacers to the hinges before installing the appliance into the cabinet. See picture.

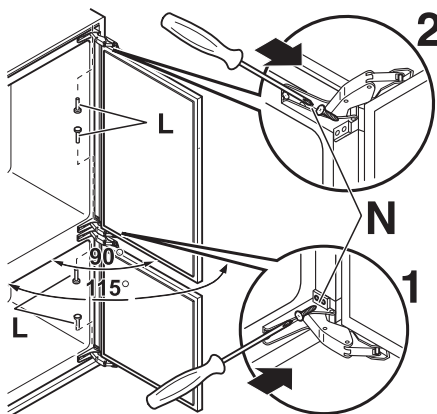


- Rest the panels against the appliance.

- Fit the rear brackets, taking into account the thickness of the panels (maximum width of unit 900 mm).
- For a correct alignment make sure that the distance between the appliance and the cabinet is of 45 mm.
- Secure the panels at the front.
- Fix the squares (contained in the bag) to the lower part of the door (references already provided).



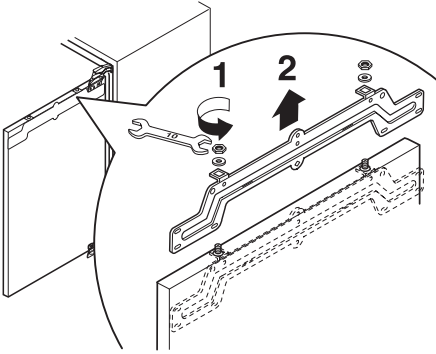
- If necessary, door opening angle max 90° can be obtained by introducing the pivots supplied separately. See picture.



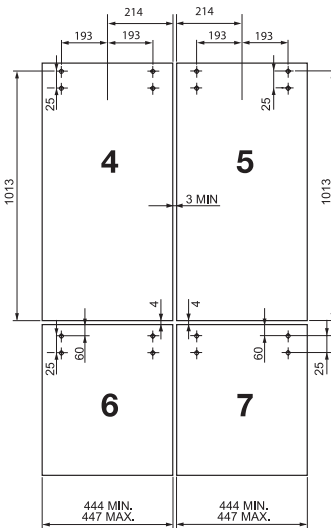
### Fitting the door panels

- Open a door and remove the bracket cover. Undo the nuts with washers and remove the bracket from the door.



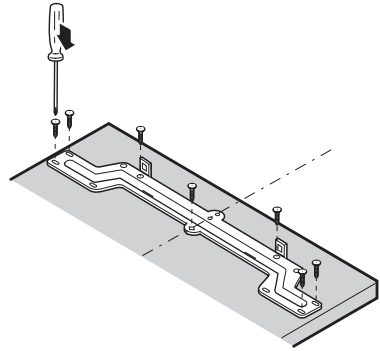


- Drill the small doors as shown in the figure.

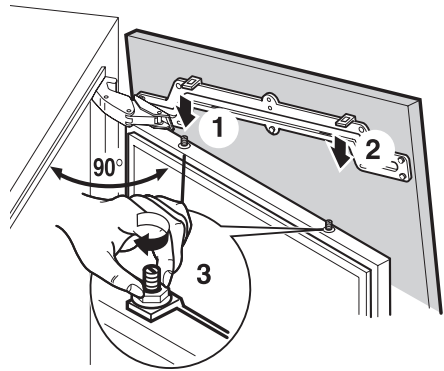


- 4 Top right-hand front panel
- 5 Top left-hand front panel
- 6 Bottom right-hand front panel
- 7 Bottom left-hand front panel

- Fix the bracket to the door with the screws contained in the bag.

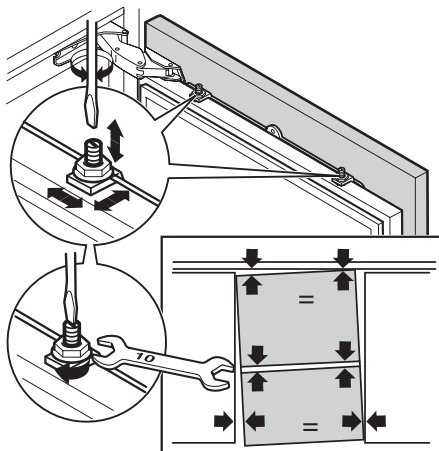


- Refit the bracket on the adjustment screws and screw the nuts with washers without tightening them down.

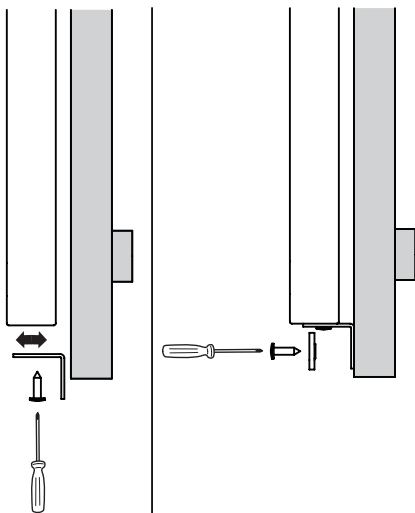


- Close the door and check that the small door is positioned at the required height, operating the adjustment screws if necessary.
- Use the same screws for vertical alignment of the small doors.
- If necessary, carry out horizontal alignment by shifting the small doors.
- After aligning the doors, tighten the nuts of the brackets and the screws of the small bracket.



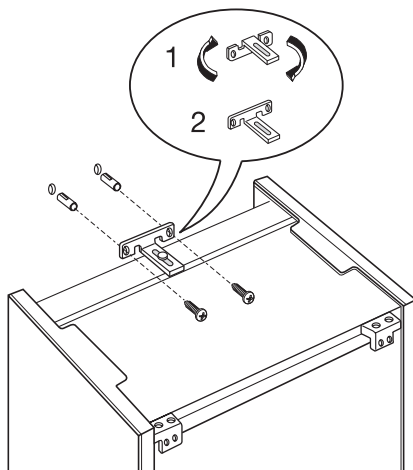


- Fix the bracket located under the door to the panel with the two plastic washers contained in the box of accessories.
- Then refit the bracket cover.

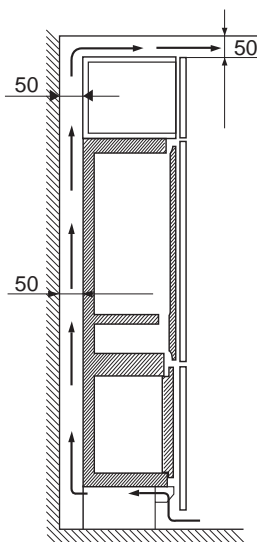


### Building the appliance in

- Fit the appliance into the recess.
- Rotate the bracket of 180° in order to obtain the right position (2). The position (1) is on the delivery.
- Fix it to the wall with the appropriate bracket.



- The top of the appliance must be kept clear to allow better air circulation. If a wall unit is fitted above the appliance, there must be a gap of 50 mm between this unit and the wall and it must be at least 50 mm below the ceiling.

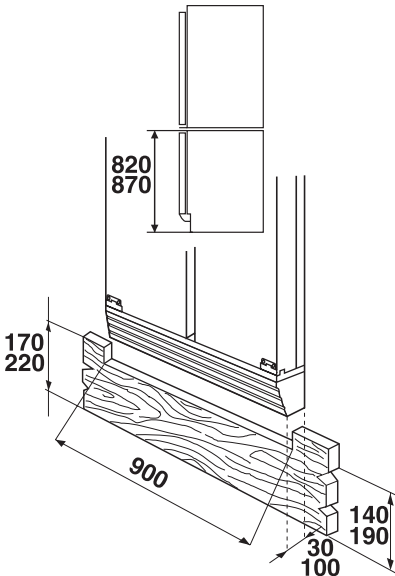


### Fitting the plinth

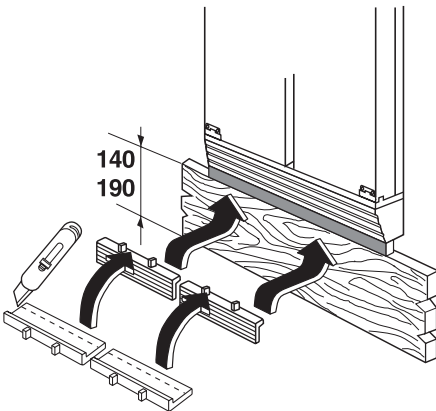
#### Alignment height of 820 mm

- If using a 140 to 170 mm plinth, make a cut-out as shown.



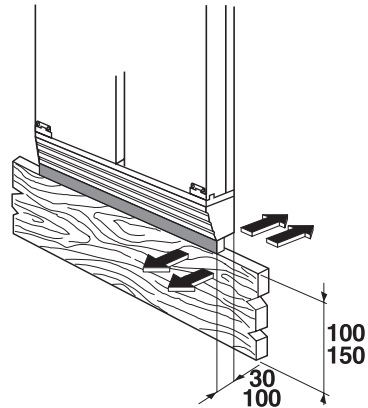


- If using a plinth higher than 100 mm but less than 140 mm, cut the height compensation strip supplied with the appliance to the required depth and fit it between the plinth and the ventilation grille, pressing it into position below this grille.
- If using a 100 mm plinth, fit the complete height compensation strip.

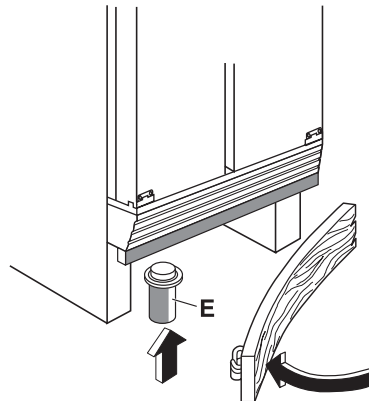


### Alignment height of 870 mm

- If using a 190 to 220 mm plinth, make a shown.
- If using a plinth higher than 150 mm but less than 190 mm, cut the height compensation strip supplied with the appliance to the required depth and fit it between the plinth and the ventilation grille.
- If using a 150 mm plinth, fit the complete height compensation strip.




- If the appliance is installed at the end of a row of units, insert foot E to hold the plinth in place.





## Environmental concerns

---

The symbol  on the product or on its packaging indicates that this product may not be treated as household waste. Instead it should be taken to the appropriate collection point for the recycling of electrical and electronic equipment. By ensuring this product is disposed of correctly, you will help prevent potential negative

consequences for the environment and human health, which could otherwise be caused by inappropriate waste handling of this product. For more detailed information about recycling of this product, please contact your local council, your household waste disposal service or the shop where you purchased the product.



