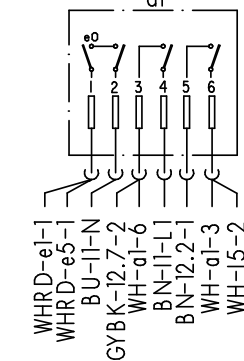
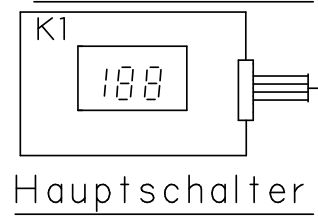
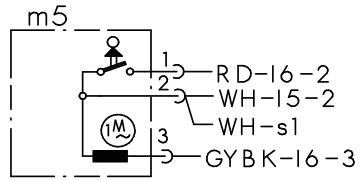


Bedien- u. Steuermodul

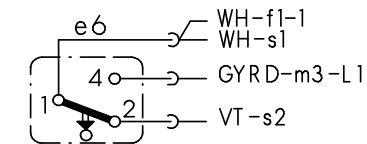
Anzeigemodul



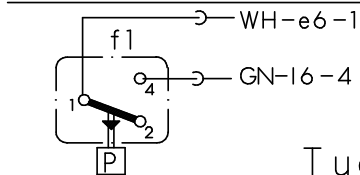
Wasserweiche



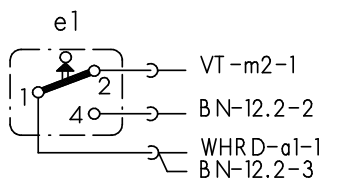
Schwimmersch.



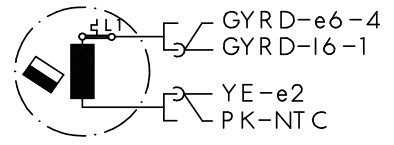
Niveaudruckdose



Tuerschalter

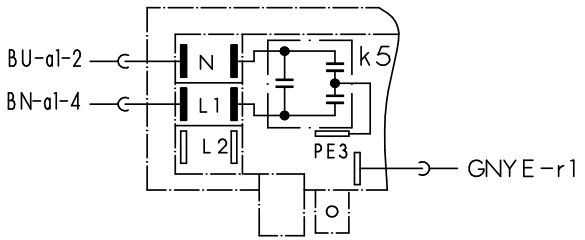


Sicherheitssch.

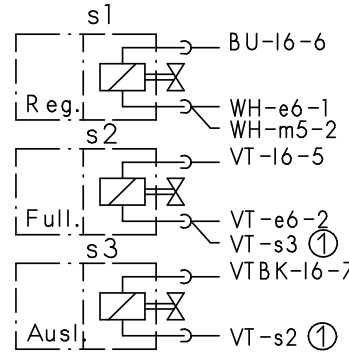


Laugenpumpe

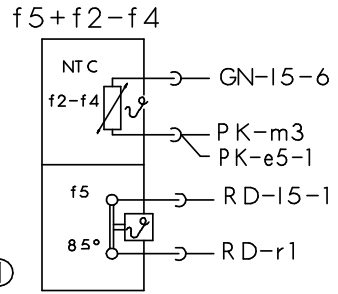
Klemme I1 mit Entstörung



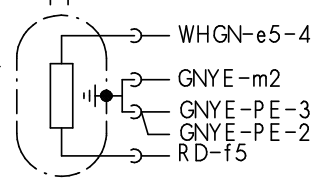
Magnetventile



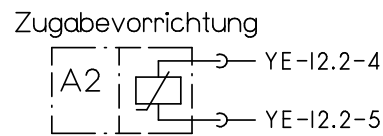
Temperaturregler + NTC



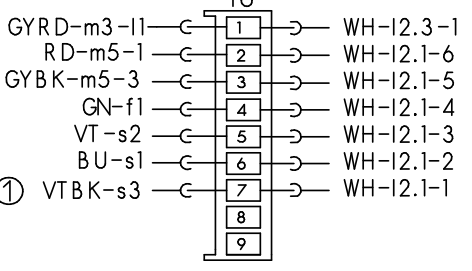
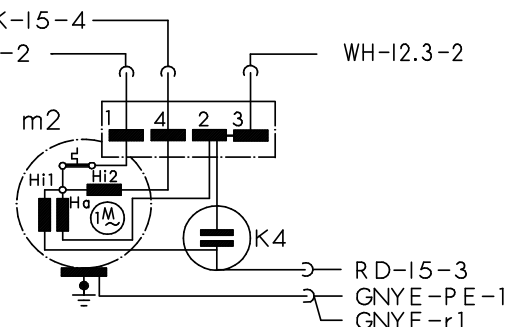
Heizung



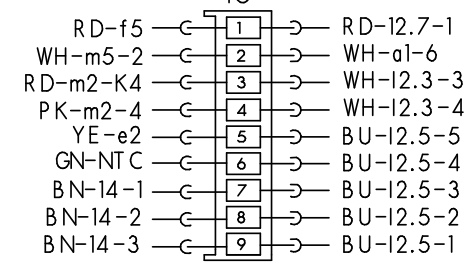
Aktuator



Motor

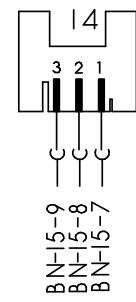


Kupplung

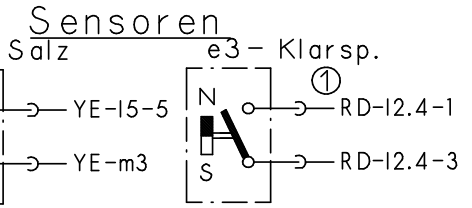
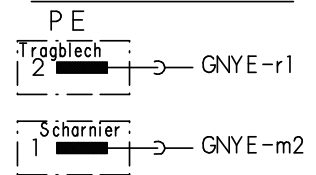


Laugenpumpe

Aqua-Sensor



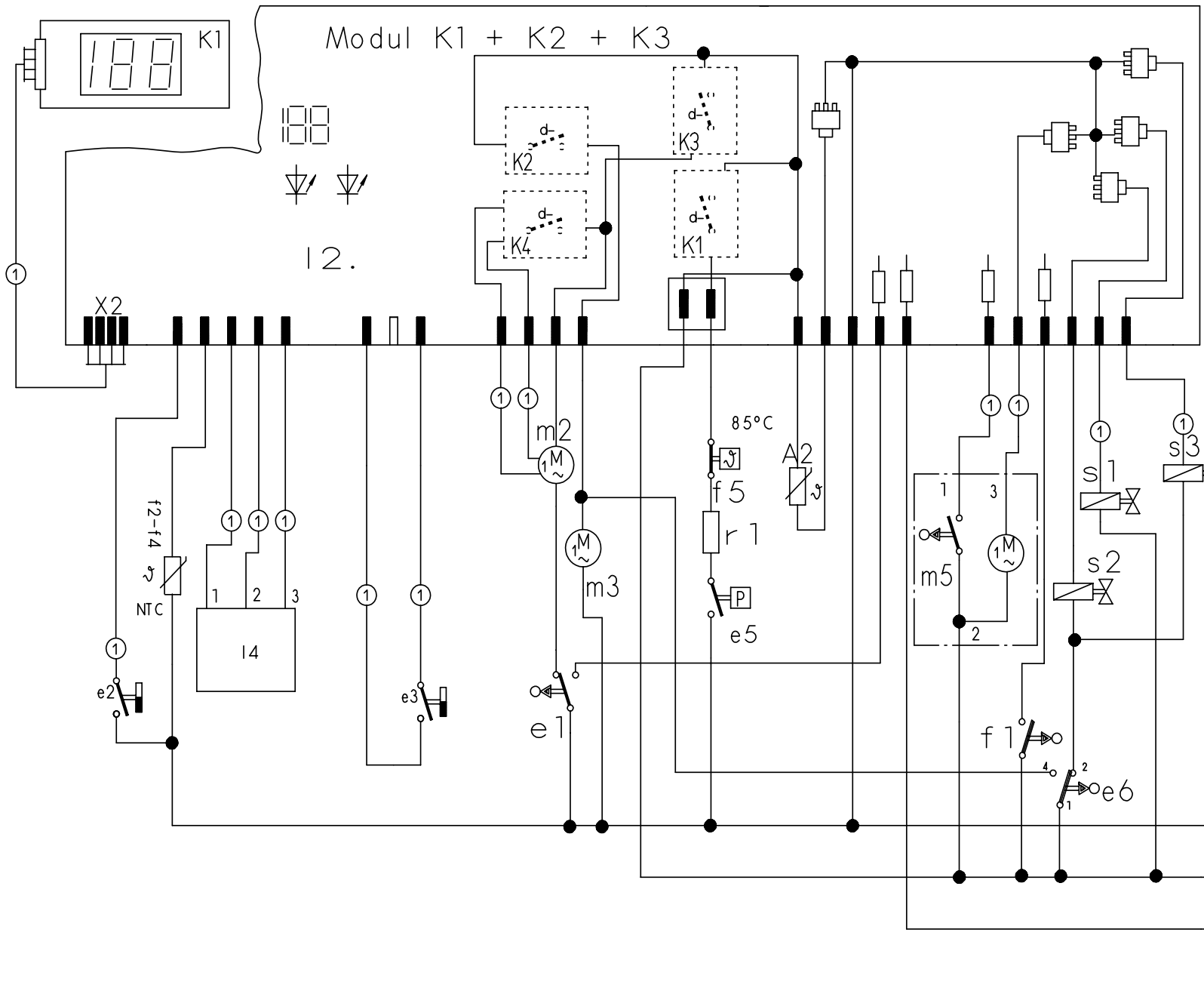
Schutzleiter



① je nach Ausstattung vorhanden
(.) Farbenwechsel

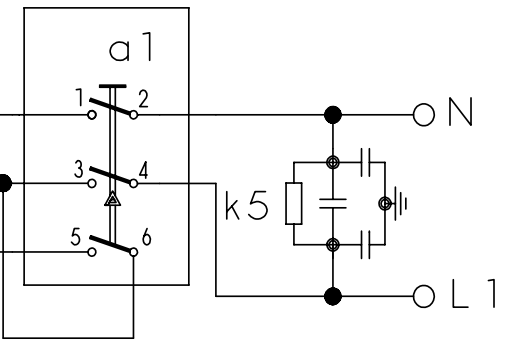


Mat.Nr.: 5600046314	
Ausg.: 03.02	S0-60/ 0645



- a1 = Hauptschalter
- e1 = Tuerschalter
- e2/3 = Reedschalter Salz/Klarsp.
- e6 = Schwimmerschalter
- f1 = Wasserstandsregler
- NTC = Temperatursensor
- f5 = Temperaturregler
- k5 = Entstörung
- K1 = Anzeige - u. Bedienmodul
- K2 = Steuermodul
- K3 = Zeitvorwahl
- m2 = Umwaelzpumpe
- m3 = Pumpe entleeren
- r1 = Heizung
- e5 = Druckschalter
- s1 = Regenerierventil
- s2 = Fuehlventil
- s3 = Auslassventil
- A2 = Zugabe-Aktuator
- x2 = Service-Anschluss
- m5 = Wasserweiche
- L4 = Aqua-Sensor
- s4 = Rohwasserventil

① je nach Ausstattung



Mat. Nr. 5600046311	
Ausg.: 08.01	S0-60/0675

