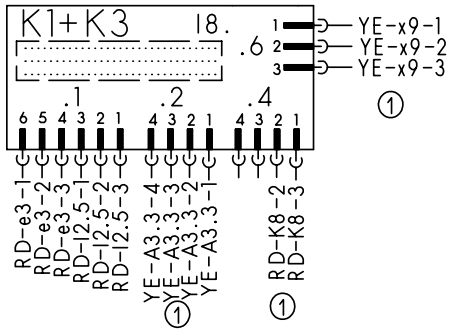
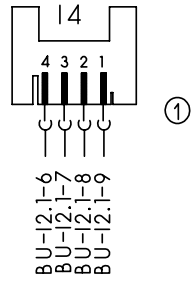


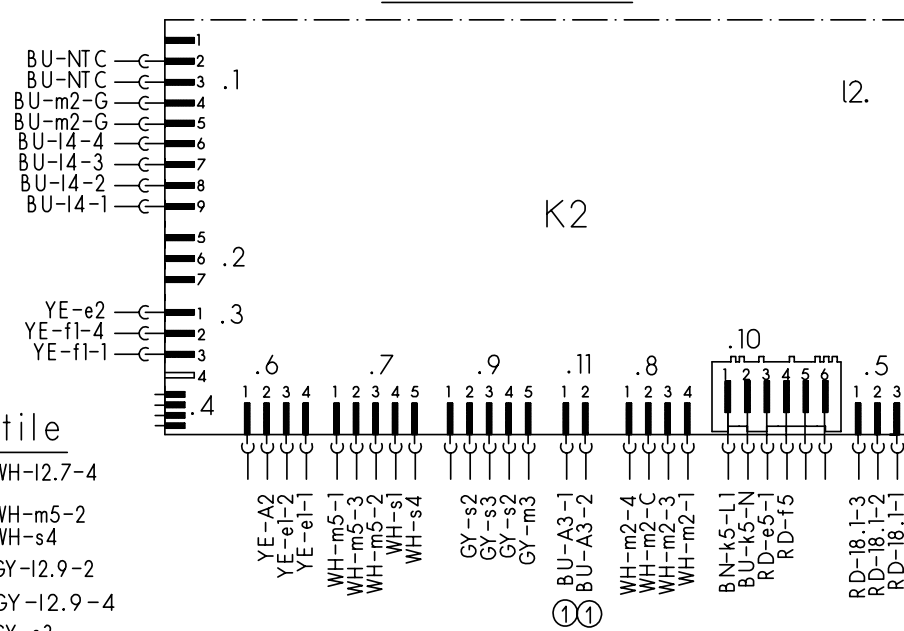
Zeitvorwahl+ Bedienmodul



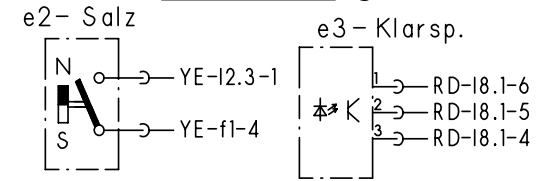
Aqua-Sensor



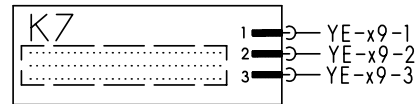
Steuermodul



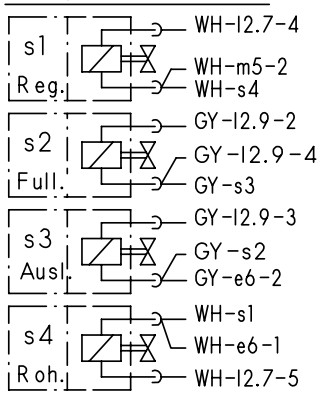
Sensoren ①



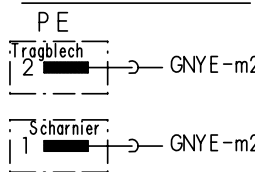
① Anzeigemodul



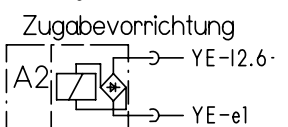
Magnetventile



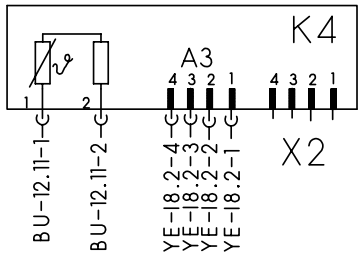
Schutzleiter



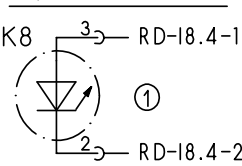
Zugabe



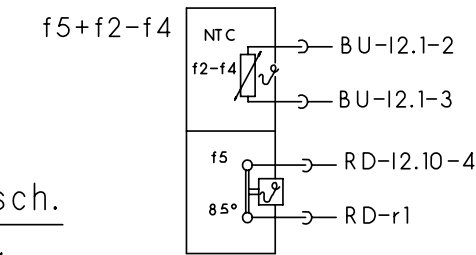
① Optosensor



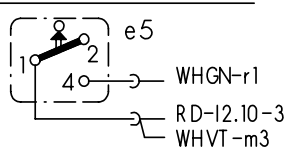
Spot-Light



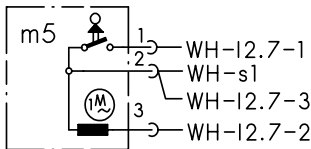
Temperaturregler+NTC



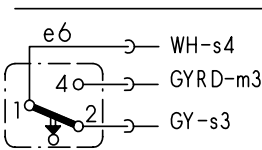
Sicherheitssch.



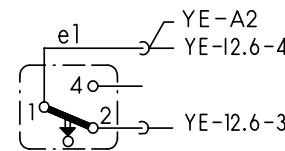
Wasserweiche



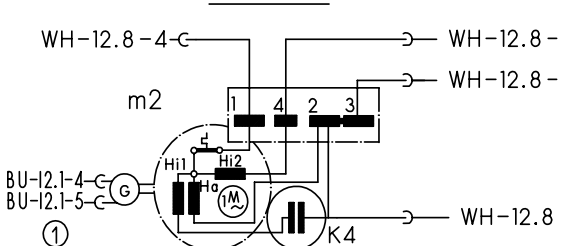
Schwimmersch.



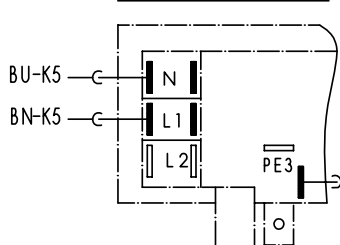
Türschalter



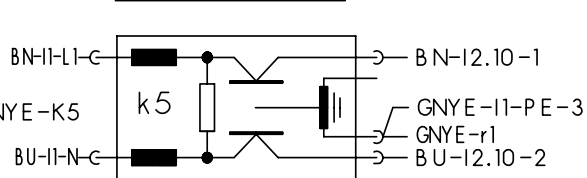
Motor



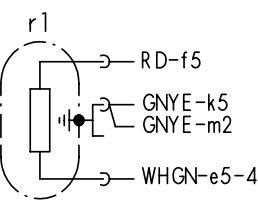
Klemme I1



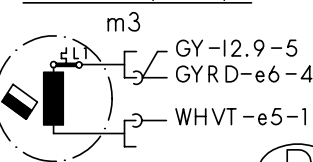
Entstoerung



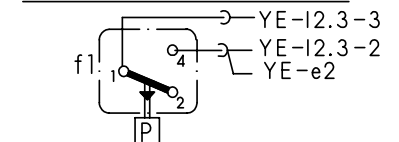
Heizung



Laugenpumpe



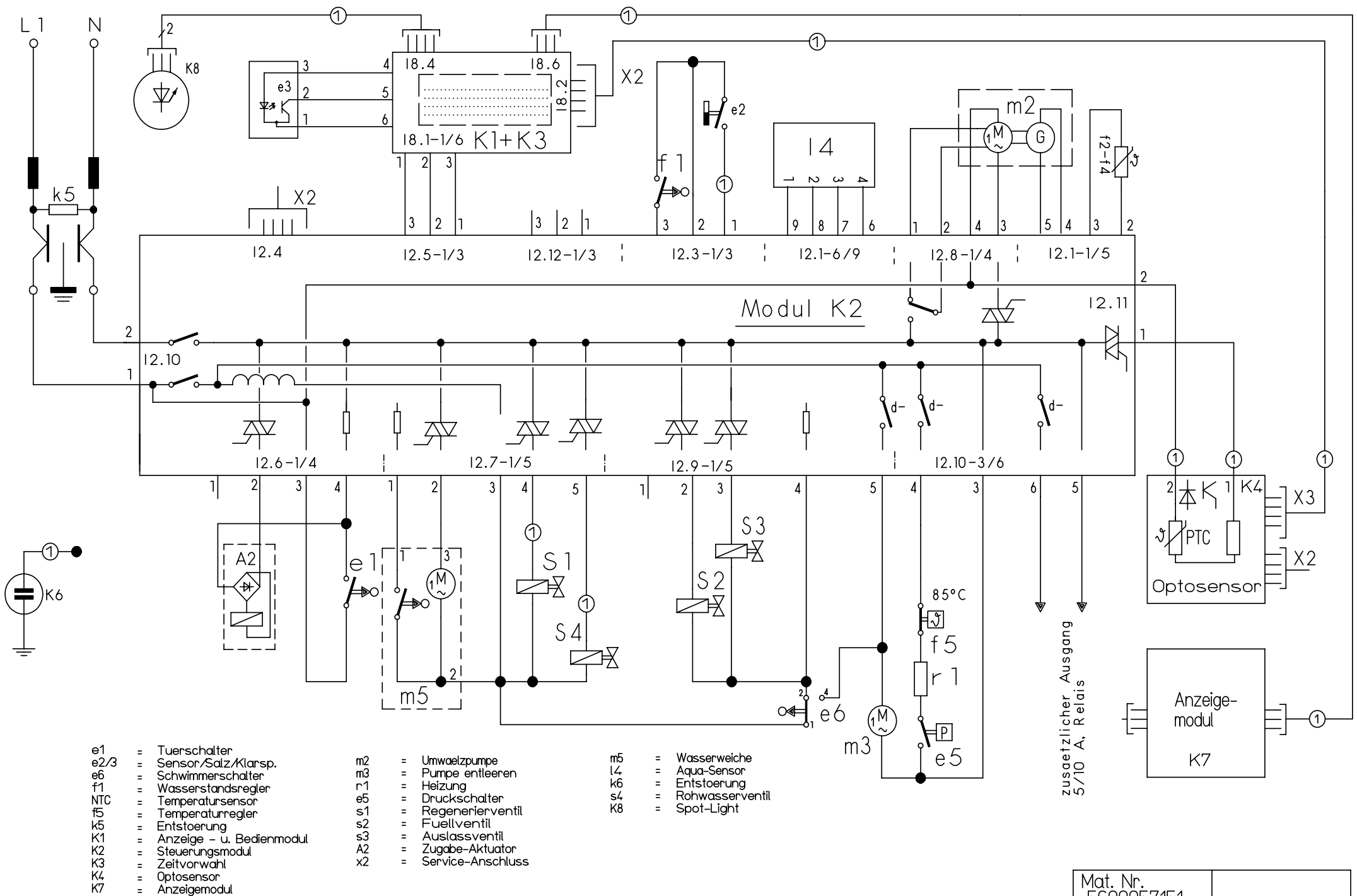
Niveaudruckdose



Mat.Nr.:	5600057150
Ausg.:	10.03 56000000106515

① je nach Ausstattung vorhanden





zusätzlicher Ausgang
5/10 A, Relais

- | | | | | | | | | |
|------|---|--------------------------|----|---|-------------------|----|---|-----------------|
| e1 | = | Tuerschalter | m2 | = | Umwälzpumpe | m5 | = | Wasserweiche |
| e2/3 | = | Sensor/Satz/Klarsp. | m3 | = | Pumpe entleeren | L4 | = | Aqua-Sensor |
| e6 | = | Schwimmerschalter | r1 | = | Heizung | k6 | = | Entstoerung |
| f1 | = | Wasserstandsregler | e5 | = | Druckschalter | s4 | = | Rohwasserventil |
| NTC | = | Temperatursensor | s1 | = | Regenerierventil | K8 | = | Spot-Light |
| f5 | = | Temperaturregler | s2 | = | Fuellventil | | | |
| k5 | = | Entstoerung | s3 | = | Auslassventil | | | |
| K1 | = | Anzeige - u. Bedienmodul | A2 | = | Zugabe-Aktuator | | | |
| K2 | = | Steuerungsmodul | x2 | = | Service-Anschluss | | | |
| K3 | = | Zeitvorwahl | | | | | | |
| K4 | = | Optosensor | | | | | | |
| K7 | = | Anzeigemodul | | | | | | |

① je nach Ausstattung



Mat. Nr. 5600057151	
Ausg.: 10.03	S0-60/0821