

- d 1 = PTC-Glied
- e 1 = Schutzschalter
- e 2 = Schalter "Gluehlampe"
- f 1 = Temperaturregler
- h 1 = Gluehlampe
- k 1 = Betriebskondensator
- l 1 = Anslussteil
- l 2 = Tragschiene
- l 3 = Steckbuchse (RLK 5)
- l 4 = Steckbuchse (Heizung)
- m 1 = Verdichter
- m 2 = Ventilatormotor
- r 1 = Heizung

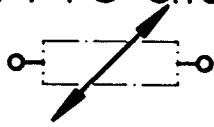
Strompfad

- 4 / 5
- 5
- 1
- 1 / 2
- 1
- 4 / 5
-
-
-
-
-
- 4 / 5
- 6
- 3



1 709 911 575	06 / 94
	50-50/0005

d1 PTC-Glied



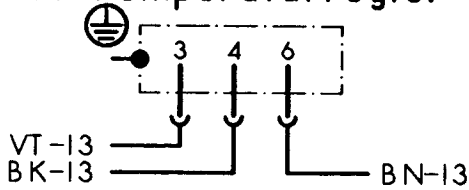
e1 Schutzschalter



e2 Schalter " Gluehlampe "



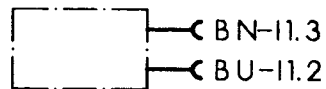
f1 Temperaturregler



h1 Gluehlampe

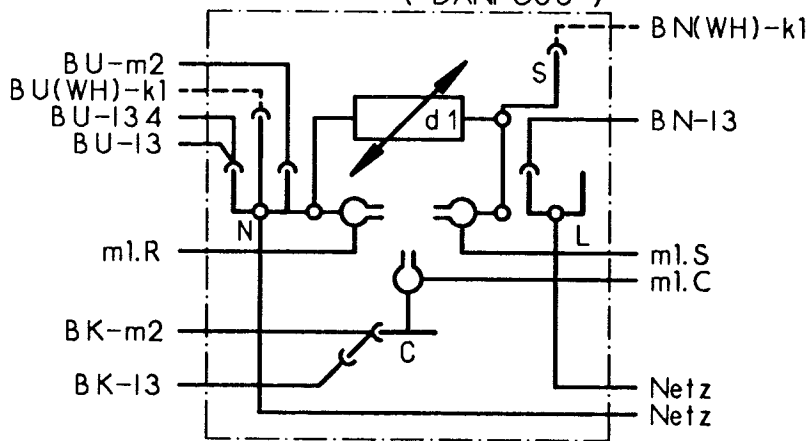


k1 Betriebskondensator

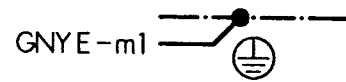


l1 Anschlussteil

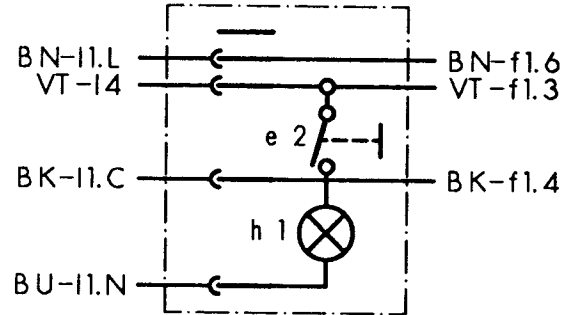
(DANFOSS)



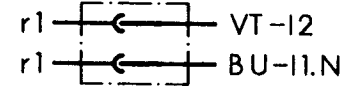
12 Tragschiene



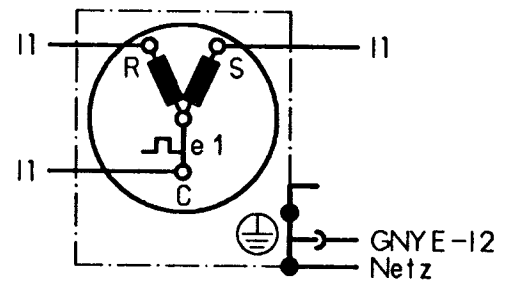
13 Steckbuchse



14 Steckbuchse Heizung



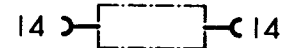
m1 Verdichter-Motor



m2 Ventilator-Motor



r1 Heizung



Farbe	Kurzzeichen nach DIN/IEC 757
schwarz	BK
braun	BN
rot	RD
orange	OG
gelb	YE
gruen	GN
blau	BU
violett	VT
grau	GY
weiss	WH
rosa	PK
gold	GD
tuerkis	TQ
silber	SR



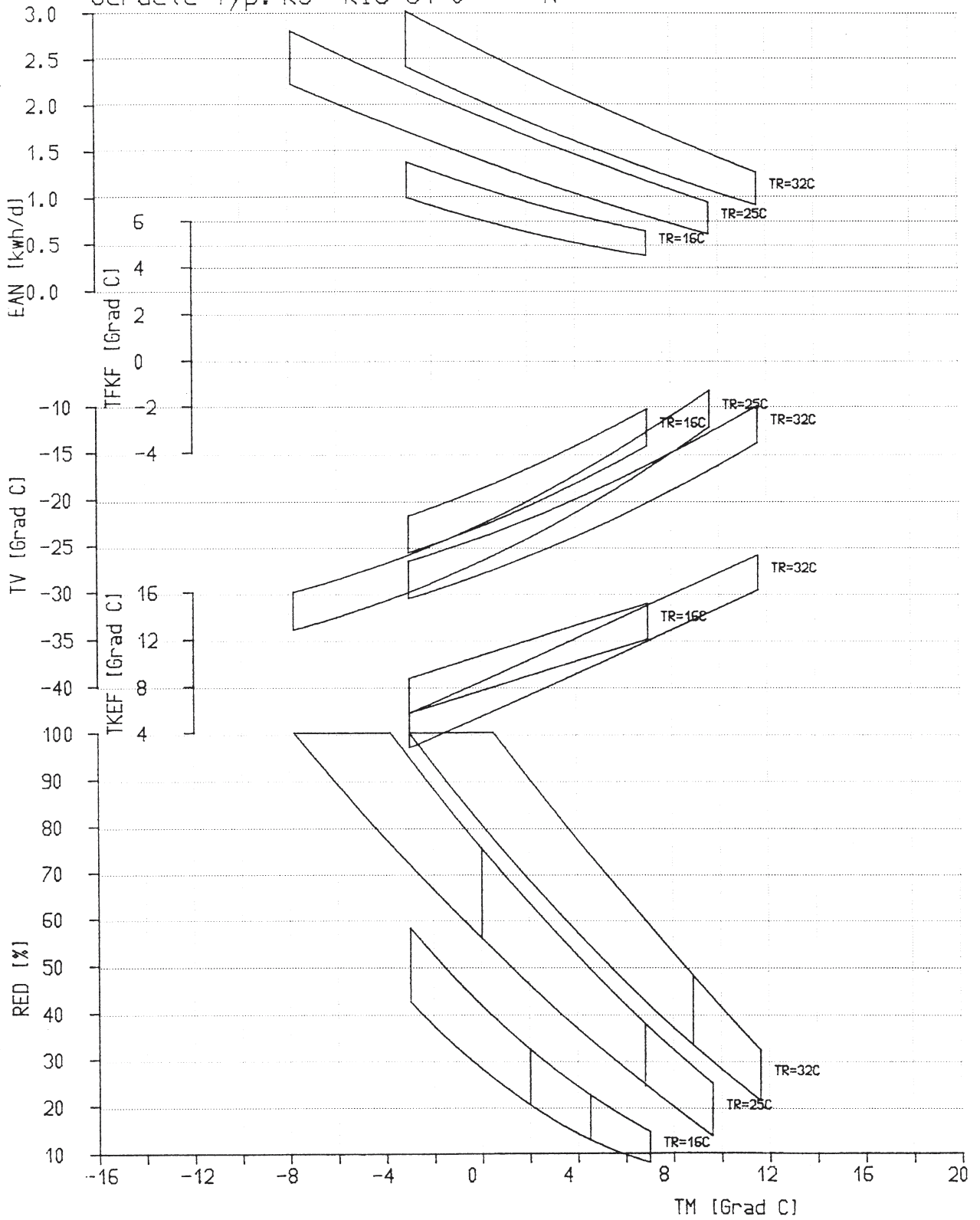
1 709 911 575	06 / 94
	50-50/0006

Sollkurvennr. 51

HWG - EGV

9:39 27. 7.95

Geraete-Typ: KS KIC 31 0 N



D

IK 328-4-3Z

KIC3135	Ausg.: 09.95
1.709.916.186	s0-50/0301D