

Strom-
pfad

1

2

3

4

5

6

7

8

Strom-
pfad

4.

1 / 2.

2.

5.

7.

4 - 7.

1 / 2.

4.

6.

5.

7.

1 / 2.

1 / 2.

3.

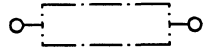
8.

- a 1 = Hauptschalter
- d 1 = PTC-Glied
- e 1 = Schutzschalter
- e 2 = Schalter "super"
- e 3 = Schalter "Alarm"
- e 4 = Schaltpult
- f 1 = Temperaturregler
- h 1 = Kontrollampe "Netzanzeige" (gruen)
- h 2 = Kontrollampe "alarm" (rot)
- h 3 = Kontrollampe "super" (gelb)
- h 4 = Summer
- k 1 = Betriebskondensator
- l 1 = Anschlussteil
- l 2 = Tragschiene
- l 3 = Steckgehaeuse
- m 1 = Verdichter-Motor
- m 2 = Ventilator-Motor
- r 1 = Rahmen-Heizung

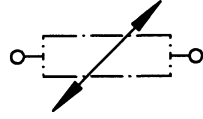


1 709 911 570	02 / 94
	S0-50/0601

a1 Hauptschalter



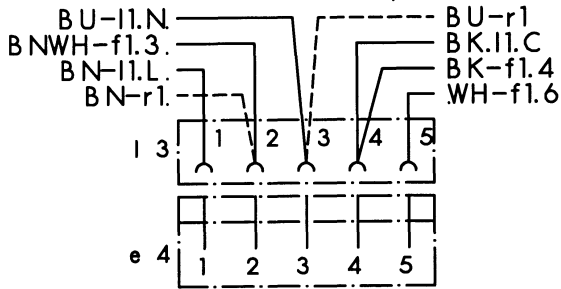
d1 PTC-Glied



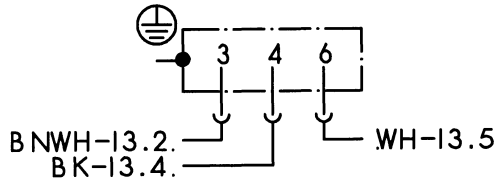
e1 Schutzschalter



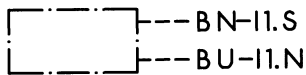
13 Steckgehäuse
+ e4 Schaltpult



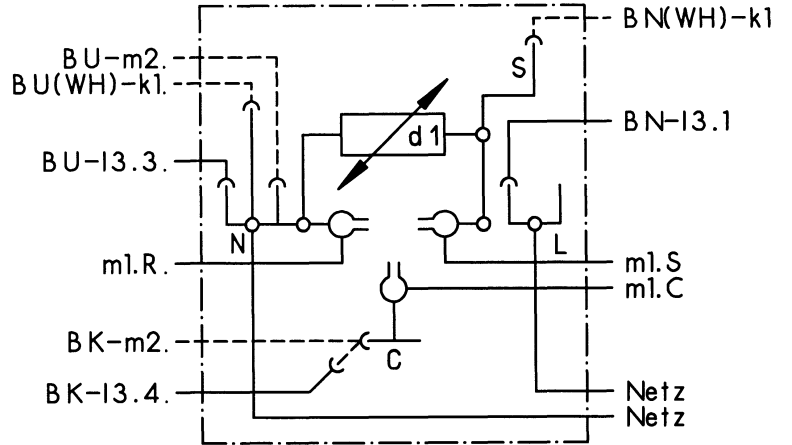
f1 Temperaturregler



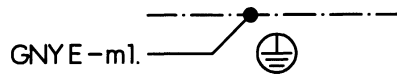
k1 Betriebskondensator



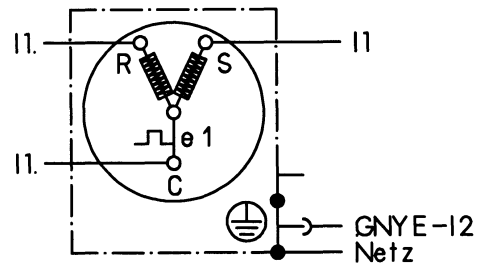
11 Anschlusssteil
(DANFOSS)



12 Tragschiene



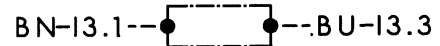
m1 Verdichter-Motor



m2 Ventilator-Motor



r1 Rahmenheizung



Farbe	Kurzzeichen nach DIN/IEC 757
schwarz	BK
braun	BN
rot	RD
orange	OG
gelb	YE
gruen	GN
blau	BU
violett	VT
grau	GY
weiss	WH
rosa	PK
gold	GD
fuerkis	TQ
silber	SR

(D)

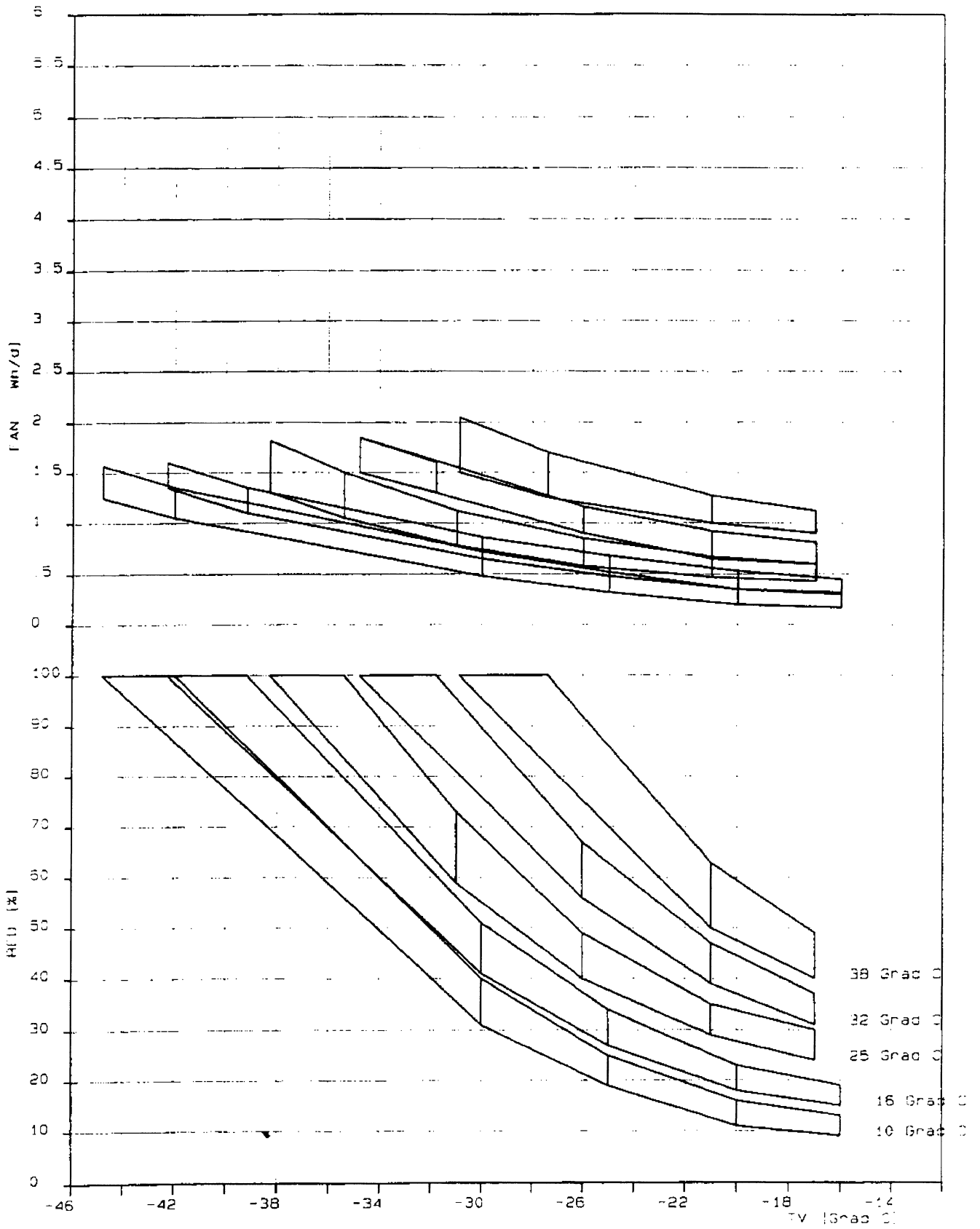
1 709 911 570	D2 / 94
.	.S0-50/0602

GIL1040 DC4 (Danfoss TLY8K)

PS 1 709 916 392

Sollkurve 712

PK/EDV Becker 9 6 98



F

GIL1040	Ausg.: 10.98
1.709.916.392	S0-50/0715