

Strom-  
pfad

1

2

3

4

5

6

7

8

Strom-  
pfad

4.

1 / 2

2

5.

7.

4 - 7.

1 / 2

4.

6.

5.

7.

1 / 2

1 / 2

3.

8.

- a 1 = Hauptschalter
- d 1 = PTC-Glied
- e 1 = Schutzschalter
- e 2 = Schalter "super"
- e 3 = Schalter "Alarm"
- e 4 = Schaltpult
- f 1 = Temperaturregler
- h 1 = Kontrolllampe "Netzanzeige" (gruen)
- h 2 = Kontrolllampe "alarm" (rot)
- h 3 = Kontrolllampe "super" (gelb)
- h 4 = Summer
- k 1 = Betriebskondensator
- l 1 = Anschlussenteil
- l 2 = Tragschiene
- l 3 = Steckgehaeuse
- m 1 = Verdichter-Motor
- m 2 = Ventilator-Motor
- r 1 = Rahmen-Heizung

1 709 911 665

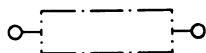
04 / 99

(D)

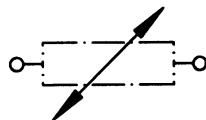
. I T E 109-5

. SO-50/0848

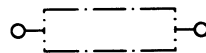
a1 Hauptschalter



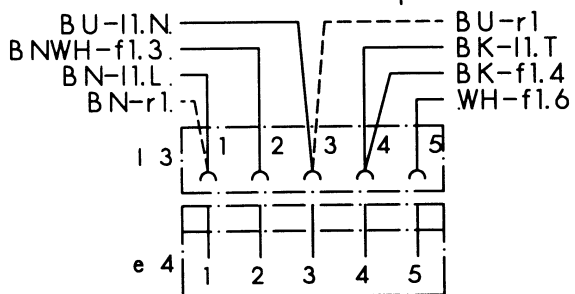
d1 PTC-Glied



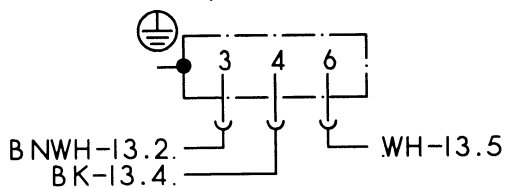
e1 Schutzschalter



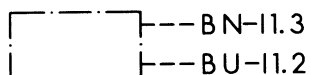
l3 Steckgehäuse  
+ e4 Schaltpult



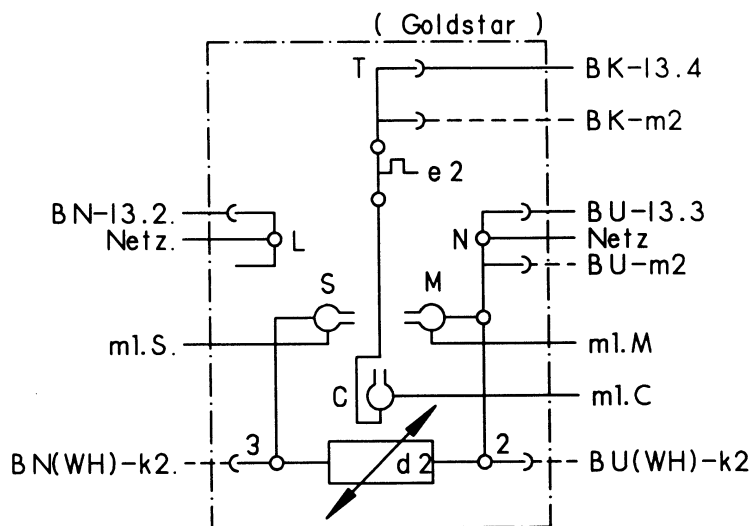
f1 Temperaturregler



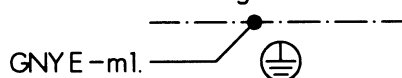
k1 Betriebskondensator



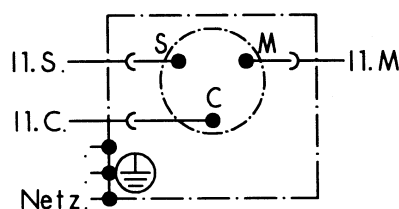
l1 Anschlussteil



l2 Tragschiene



m1 Verdichter-Motor



m2 Ventilator-Motor



r1 Rahmenheizung



Farbe	Kurzzeichen nach DIN/IEC 757
schwarz	BK
braun	BN
rot	RD
orange	OG
gelb	YE
gruen	GN
blau	BU
violett	VT
grau	GY
weiss	WH
rosa	PK
gold	GD
tuerkis	TQ
silber	SR

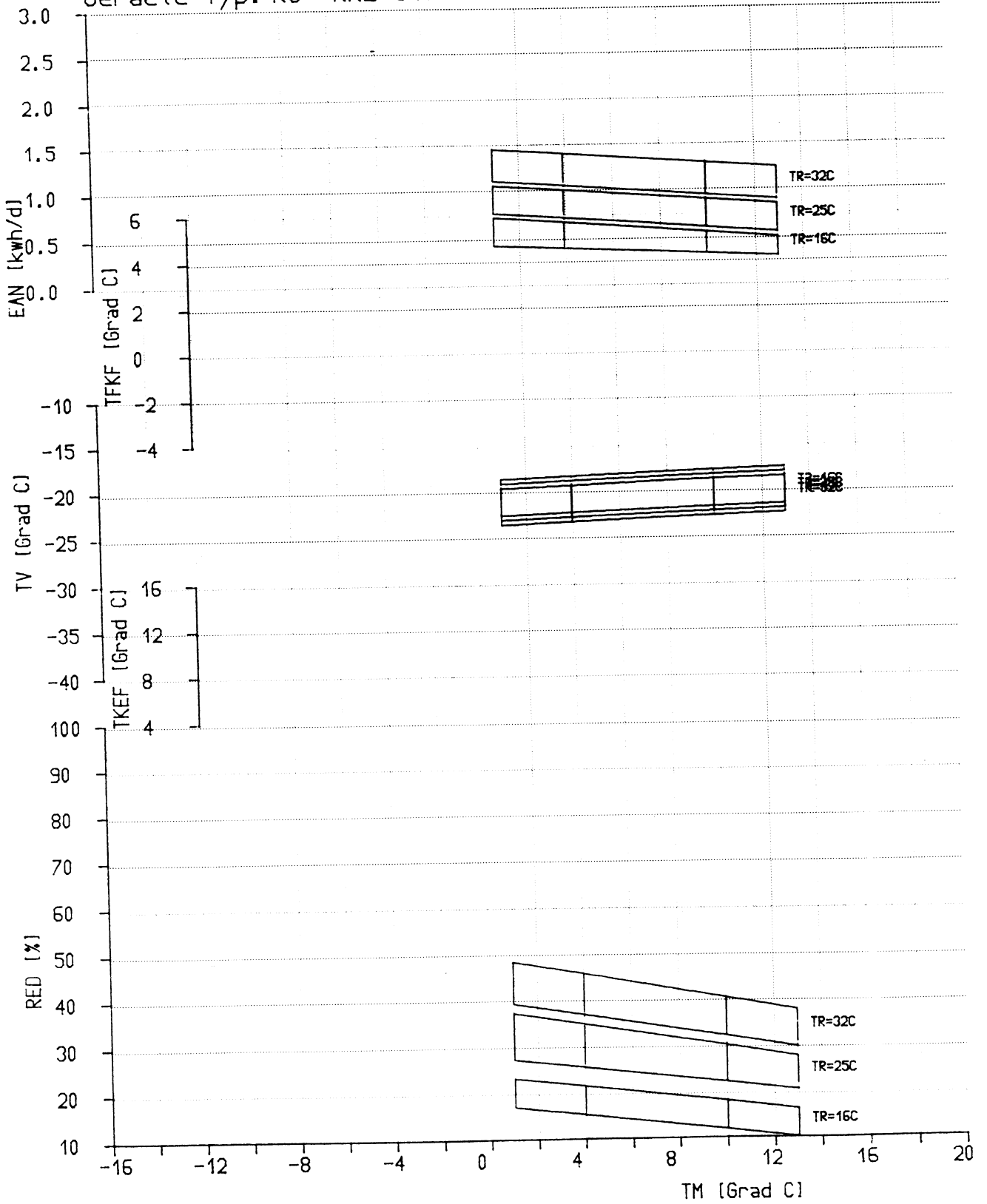
1 709 911 665	04 / 99
ITE 109-S	S0-50/0849

Sollkurvennr.132

HWG - EGV

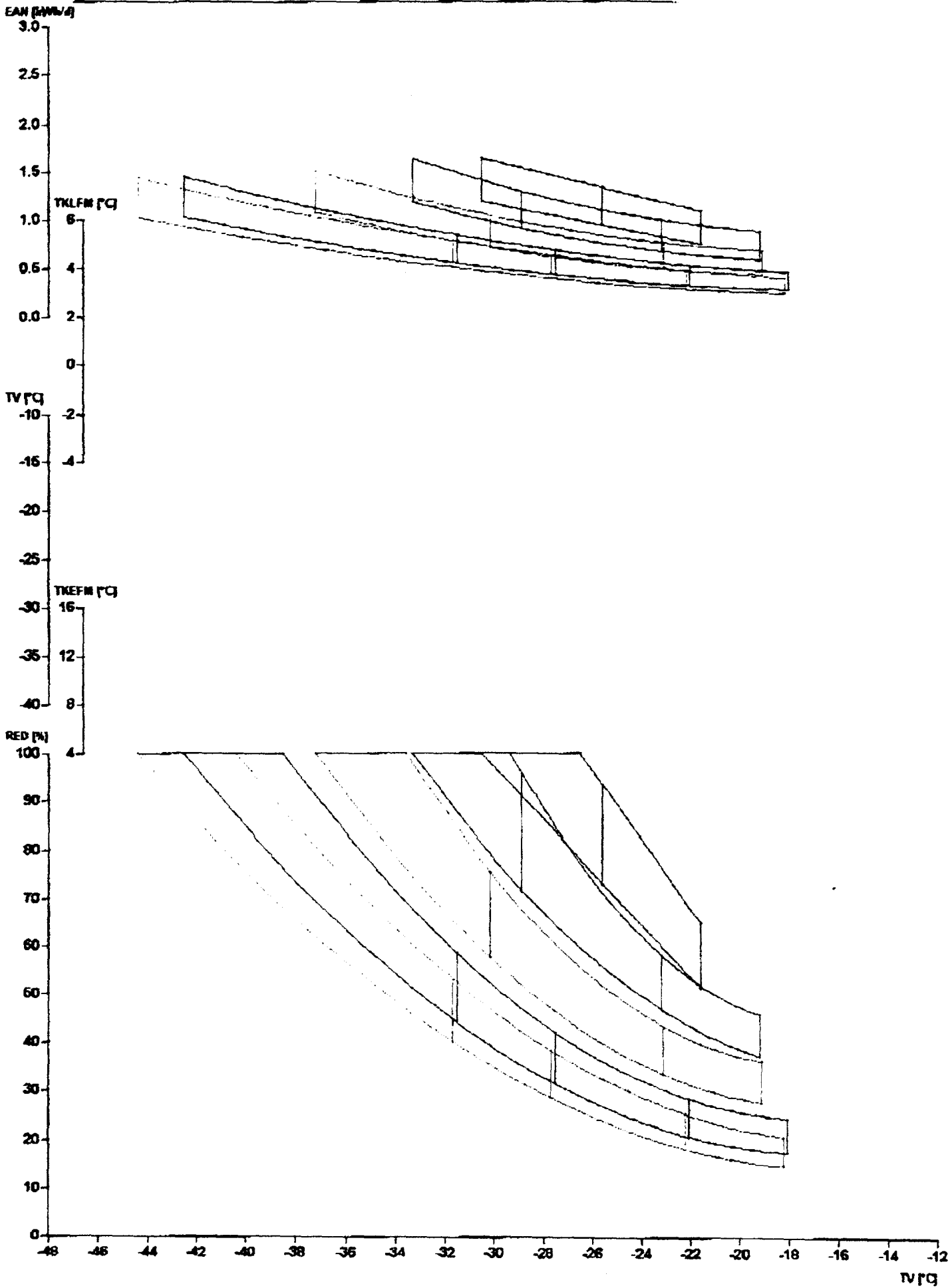
11:08 27. 7.95

Geraete-Typ: KG KKE 3101 N M



D

KKE3101	Ausg.: 09.95
1.709.916.182	s0-50/0297D



- 38 °C ————
- 32 °C - - - - -
- 25 °C - · - · -
- 16 °C ————
- 10 °C - - - - -

(D)

1709916618	Ausg.: 12/02
GFL1040	S0-50/1560D

ITE 109-5