

Strom- 1 2 3 4 5 6 7 8
 pfad

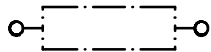
- a 1 = Hauptschalter
- d 1 = PTC-Glied
- e 1 = Schutzschalter
- e 2 = Schalter "super"
- e 3 = Schalter "Alarm"
- e 4 = Schaltpult
- f 1 = Temperaturregler
- h 1 = Kontrollampe "Netzanzeige" (gruen)
- h 2 = Kontrollampe "alarm" (rot)
- h 3 = Kontrollampe "super" (gelb)
- h 4 = Summer
- k 1 = Betriebskondensator
- l 1 = Anschlussteil
- l 2 = Tragschiene
- l 3 = Steckgehaeuse
- m 1 = Verdichter-Motor
- m 2 = Ventilator-Motor
- r 1 = Rahmen-Heizung

- Strom- 4.
- pfad 1 / 2.
- 2.
- 5.
- 7.
- 4 - 7.
- 1 / 2.
- 4.
- 6.
- 5.
- 7.
- 1 / 2.
- 1 / 2.
- 3.
- 8.

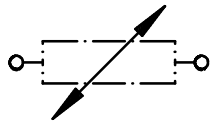
(D)

1 709 911 665	04 / 99
.	.S0-50/0848

a1 Hauptschalter



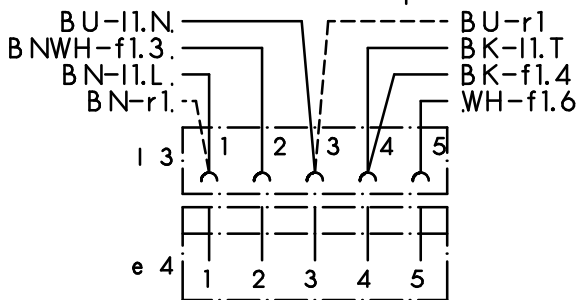
d1 PTC-Glied



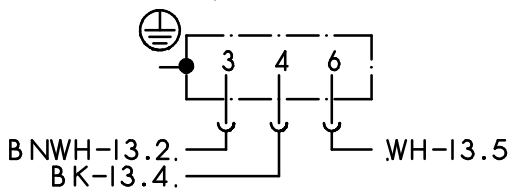
e1 Schutzschalter



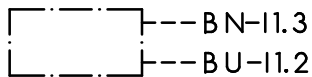
l3 Steckgehaeuse
+ e4 Schaltpult



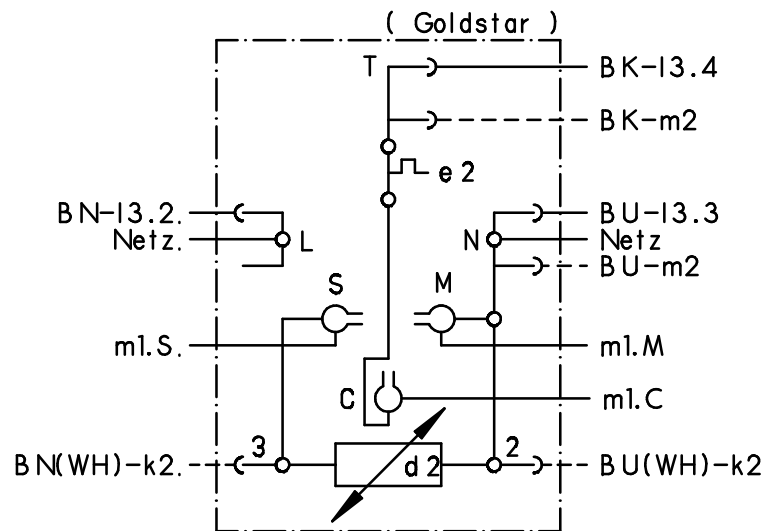
f1 Temperaturregler



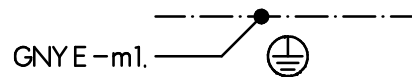
k1 Betriebskondensator



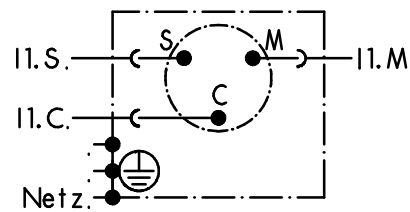
l1 Anschlussenteil



l2 Tragschiene



m1 Verdichter-Motor



m2 Ventilator-Motor



r1 Rahmenheizung



Farbe	Kurzzeichen nach DIN/ IEC 757
schwarz	BK
braun	BN
rot	RD
orange	OG
gelb	YE
gruen	GN
blau	BU
violett	VT
grau	GY
weiss	WH
rosa	PK
gold	GD
tuerkis	TQ
silber	SR



1 709 911 665	04 / 99
.	.S0-50/0849