



Cooker hoods
KD6590.0GE and KD9590.0GE
Accessing the components

Service Manual: H5-85-04

Responsible: U. Laarmann
E-mail: uwe.laarmann@kueppersbusch.de
Tel.: (0209) 401-732
Fax: (0209) 401-743
Date: 18.06.2013

KÜPPERSBUSCH HAUSGERÄTE AG

Customer Service
Postfach 100 132
45801 Gelsenkirchen

Contents

1. Safety	4
2. Accessing the components inside the hood	5
2.1 Removing the controls.....	5
2.2 Accessing the electronic unit and the transformer	6
2.3 Accessing the halogen lamp	6
3. Circuit diagram	7
4. Controls	8
5. Filters	10
5.1 Metal grease filters	10
5.2 Charcoal odour filter (filter version)	10

1. Safety



Danger!

***Repairs may only be carried out by a qualified electrician!
Improper repairs can be extremely dangerous for the user.***

It is essential that you observe the following instructions in order to prevent electric shocks:

- The casing and the frame may be live in the event of faults!
- Touching live components inside the appliance may cause dangerous currents to flow through your body!
- Disconnect the appliance from the mains prior to carrying out any repair work!
- When inspecting live parts, a residual current circuit breaker must always be used!
- The earthed conductor resistance may not exceed the resistance specified in the standard! It is vital for ensuring the safety of persons and the functioning of the appliance.
- On completion of repairs, an inspection must be carried out in accordance with VDE 0701 [Association of German Electrical Engineers] or the corresponding regulations for your country!



Attention!

It is essential that you observe the following instructions:

- The appliances must be disconnected from the mains prior to all repairs. If inspections must be carried out on live appliances, make sure you use a residual current circuit breaker.



Sharp edges: use protective gloves.



Components may be electrostatic!
Observe handling regulations!

2. Accessing the components inside the hood

Two models of the hood are produced: stainless steel with Soft Touch electronic controls and stainless steel/glass with Touch Control electronic controls.

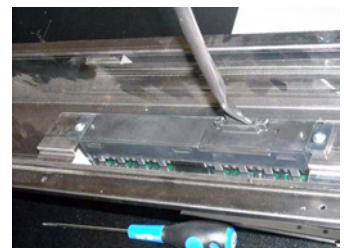
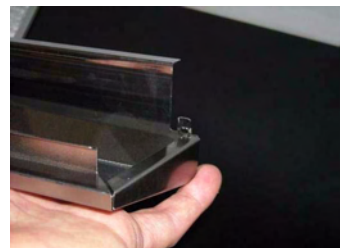
The middle panels of both models can be opened when pulled out. This gives you access to the components inside the hood.

The panel is removed by means of the movable hinge peg.



2.1 Removing the controls

1. Remove the two screws that fasten the front of the hood to its casing.
2. Use a small screwdriver to remove the springs on the front (on the left and right) from the casing section.
3. Pull out the front.
4. Screw out the two screws on the back of the front part which fasten the controls to the clamp.



2.2 Accessing the electronic unit and the transformer

When the edge suction panels and the grease filter are removed, the components inside the hood can be accessed.

The ATF circuit board and the transformer of appliances fitted with an Athena electronic system are located in a box within the Easy Cube.



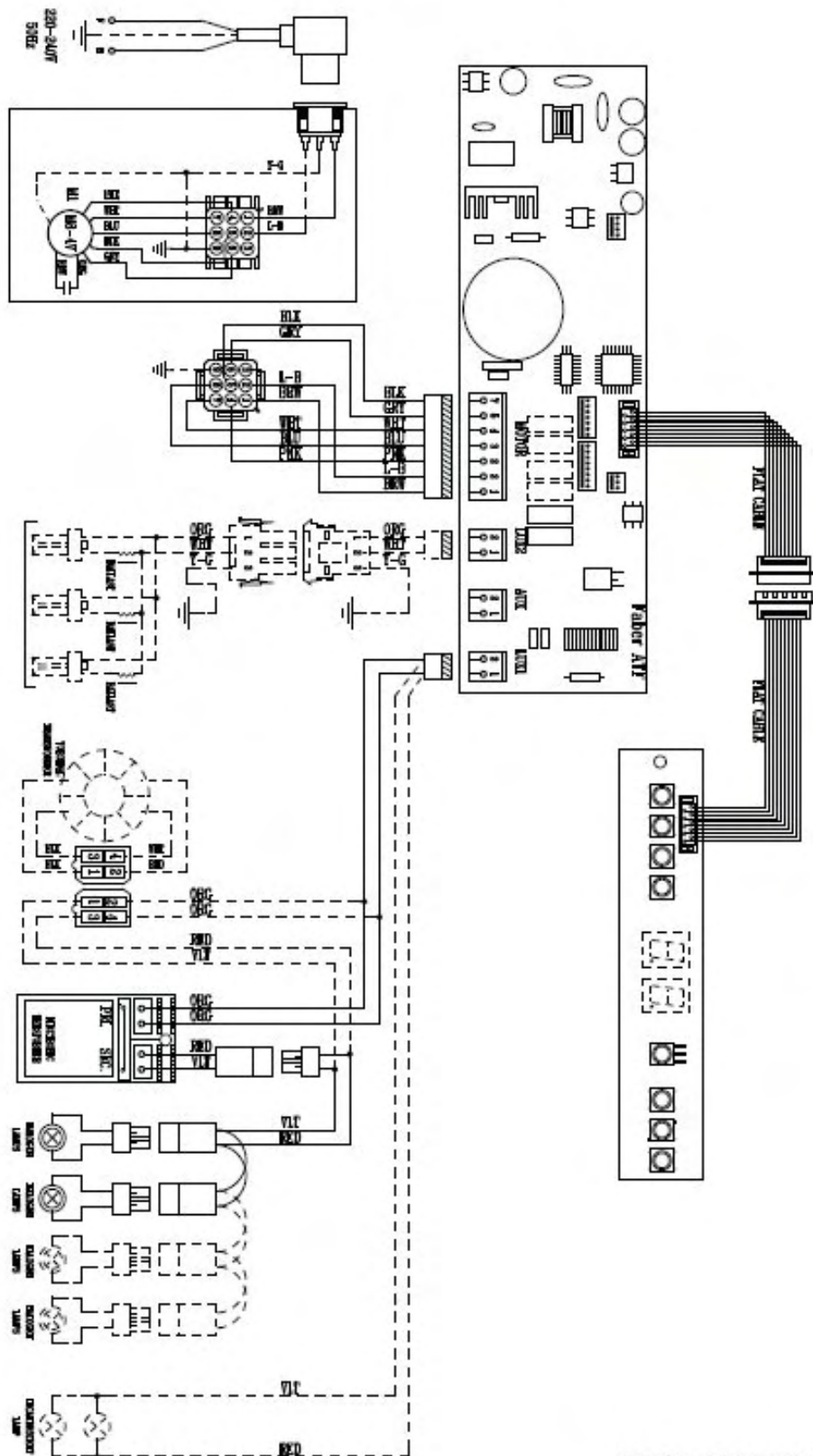
2.3 Accessing the halogen lamp

The halogen lamp holders are accessible when the three screws shown are screwed out.

However, a single halogen lamp can be replaced from the outside by simply pulling it out.

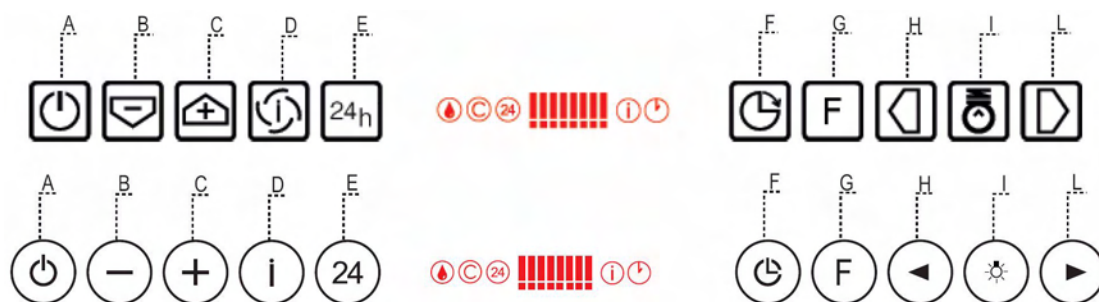


3. Circuit diagram



436004955 H90_044 r2

4. Controls



Key	Function	Display
A	Switches the extractor motor on and off.	-
B	Reduces the operating speed.	The illuminated segments are reduced.
C	Increases the operating speed.	The illuminated segments are increased.
D	Activates the intensive speed, apart from the delay and 24 h speeds, which is timed for ten minutes. When this time has expired, the system returns to the speed that had previously been set. Suitable for removing extremely intensive cooking odours.	I blinks and all the segments on the display light up. Is switched off by pressing the key.
	The alarm for the charcoal filter is activated / deactivated keeping the key pressed for approx. 5 seconds with the consumers (motor + light) switched off.	Symbol C blinks twice – alarm activated. Symbol C blinks once – alarm deactivated.
E	Activates the motor in the air circulation mode, at a speed which enables an extraction rate of 100 m³/h for 10 minutes every hour, after which time the motor is stopped.	Shows 24 , and all the segments shown on the display are deleted one after the other. Is switched off by pressing the key.
F	<ul style="list-style-type: none"> Activates the automatic switch-off function with a 30-minute delay. Completes the removal of residual odours. Can only be activated when the motor is switched on at a speed that is not 24H or intensive speed. 	Shows a flashing clock as a symbol. Is switched off by pressing the key.
	Keep the key pressed for approx. 5 seconds to switch the remote control on and off.	When the horizontal bar blinks twice - remote control activated. When the horizontal bar blinks once - remote control deactivated.
G	Resets the filter saturation alarm when the key is pressed for approx. 3 seconds.	After 100 hours of operation the drop symbol shows that the metal filters are saturated. After 200 hours of operation the C shows that the charcoal filters are saturated.

H	Reduces the intensity of lighting cyclically every time the key is pressed.	
I	Switches the lighting system on and off at the highest level of intensity.	
L	Increases the intensity of lighting cyclically every time the key is pressed.	

Keyboard lock control command: The keyboard can be locked, for example when the glass panes need to be cleaned, provided that the hood motor and lighting system are switched off.

Keep key A pressed for approx. 5 seconds in order to activate or deactivate the keyboard lock. The procedure is always confirmed with a beep and when the motor bar is shown on the display.

5. Filters

5.1 Metal grease filters

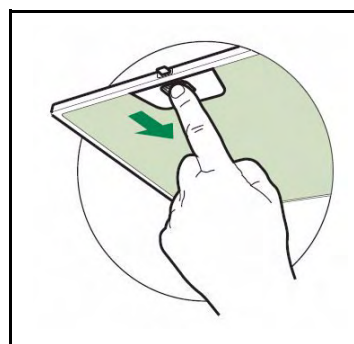
The filters can be cleaned in the dishwasher; they should be cleaned when the drop symbol appears on the display, or at least approx. every 2 months, or more frequently when the hood is used very intensively.

5.1.1 Resetting the saturation display

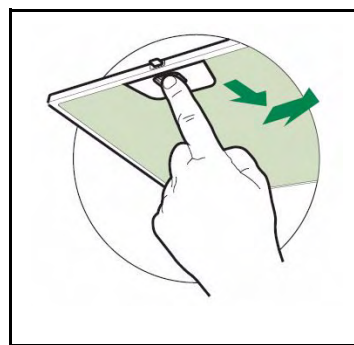
Press key G for at least 2 seconds.

5.1.2 Cleaning the filters

1. Open the Comfort Panel.
2. Remove the filters one by one by pushing them to the back of the group and at the same time pulling them down.
3. Wash the filters, making sure not to bend them, and dry them before putting them back in place (the filter surfaces may become discoloured with time; this will not have any impact on the effectiveness of a filter).
4. When remounting the filters, make sure that the handle is on the visible exterior.
5. Close the Comfort Panel again.



IMPORTANT: For the 60-cm model, only remove the filters one after the other by initially pushing them backwards while at the same time pulling them downwards and then pulling them towards the centre of the hob.



5.2 Charcoal odour filter (filter version)

The charcoal filter is not washable and nor is it recoverable; it needs to be replaced as soon as the symbol C is shown in the display or at least after 4 months. The alarm report is preventively activated.

5.2.1 Activating the alarm signal

1. For cooker hoods with filters, the alarm display for filter saturation is activated when the filter is installed or as a result of installation.

2. Switch off the lighting and the extraction motor.
3. Press key D for approx. 5 seconds.
When the C symbol blinks twice, the alarm for the charcoal filter setting is ACTIVATED.
When the C symbol blinks once, the alarm for the charcoal filter setting is DEACTIVATED.

5.2.2 Replacing the charcoal odour filter

Resetting the saturation display

1. Switch off the lighting and the fan motor.
2. Press key G for at least 2 seconds.

Replacing the filter

1. Open the Comfort Panel.
2. Remove the metal grease filters.
3. Remove the saturated charcoal filter as shown in the drawing.
4. Mount the new filter in its correct place.
5. Mount the metal grease filters again.

