

Warming drawers - New electronics and wiring harness

Models involved: WS6029.0GE

Changing the electronics spare part no. 53 46 19 and wiring harness spare part no. 54 56 90

Wenn replacing the electronics of the listed models by the new electronics, the wiring must be changed, applying the following steps.

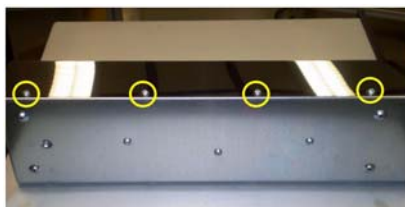
Step 1:

Remove the tray from the sliders taking out the two screws identified on the following image. In some drawer can be found 6 screws because after 08/09/2009 we introduce two additional screws on the left side. Remove the power supply cord..



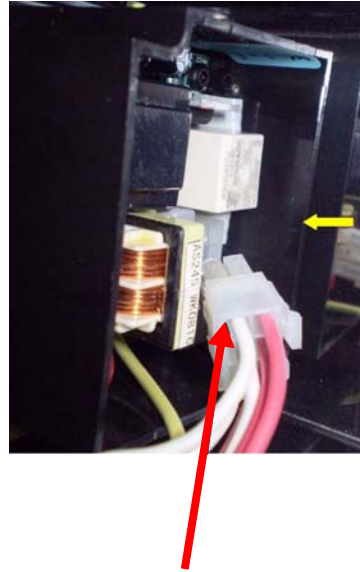
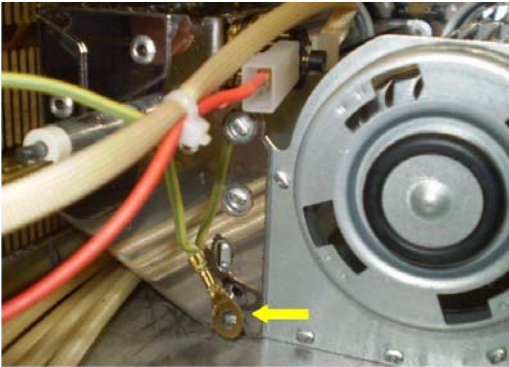
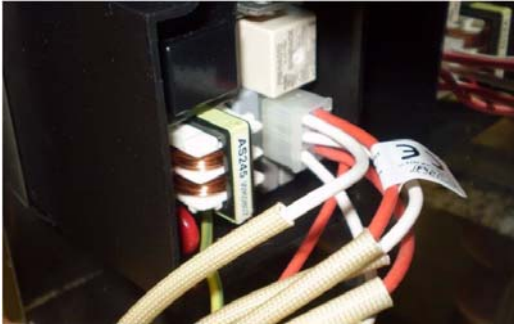
Step 2:

On the left side of the warming drawer remove the screws identified on the image. With this operation concluded the thermo blower can be removed easily.



Step 3:

Identify the 6 way connector that is connected on the digital programmer and disconnect it. Remove the earth connection on the motor

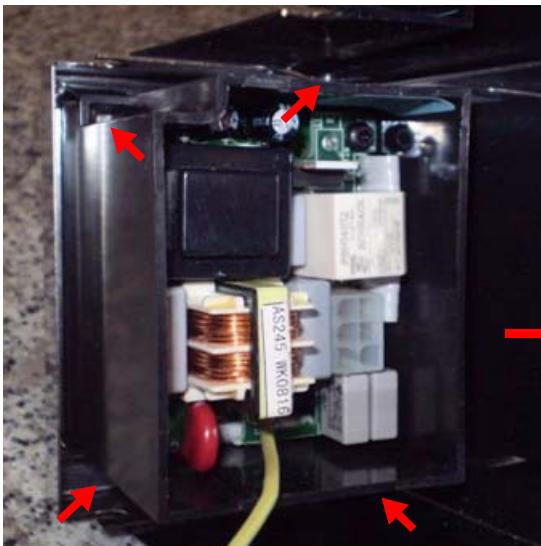


To disconnect the 6 way connector press the lateral lock as indicated on the photo.

Step 4:

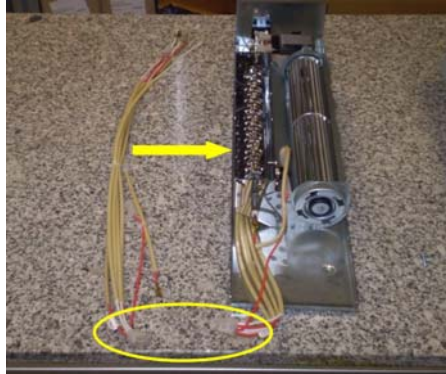
To replace the digital programmer for new one 942024 is necessary release the 4 locks that are fixing the digital programmer to the enclosure as showed on the image. To release the locks it can be used a screw driver.

Place the new programmer on the enclosure assuring that is completely blocked..



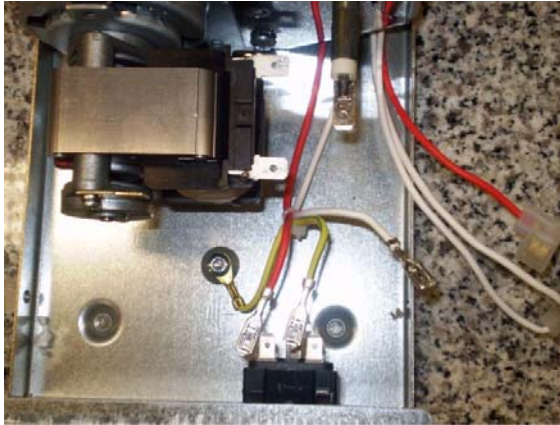
Step 5:

Replace the wiring for the new one supplied with the service kit. The wiring has different output sequence on the 6 way connector.



Step 6:

Disconnect all the loads and take out the wiring as shown in the pictures. After that pull the wiring in the front direction to release it completely from the thermo blower..



Pull the wiring in the arrow direction. If necessary unscrew the 3 screws backside

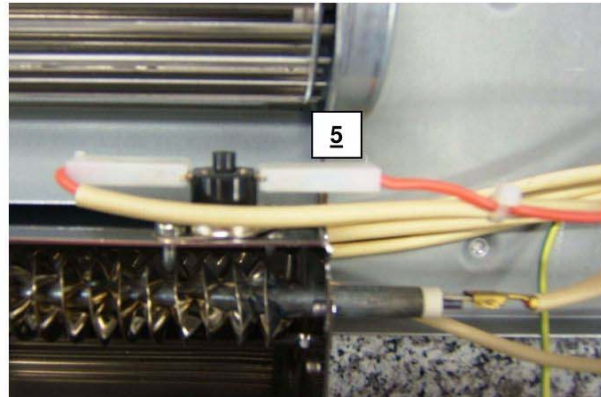
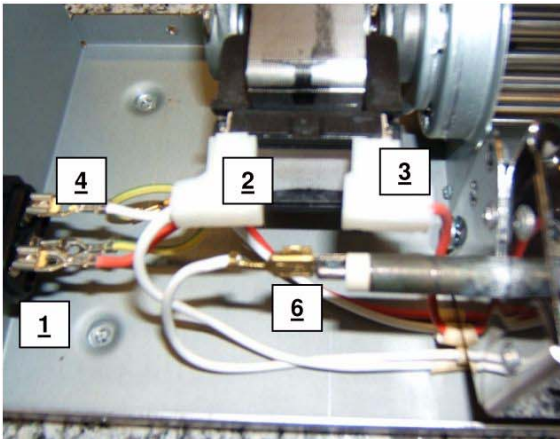
Step 7:

Introduce the new wiring performing the actions in the reverse sequence as defined in step 6.

Step 8:

Connect the wiring to the loads according to the sequence:

| 6 ways connector | Load |
|------------------|-----------------------|
| Position 1 | Inlet connector IEC |
| Position 2 | Motor |
| Position 3 | Motor |
| Position 4 | Inlet connector IEC |
| Position 5 | Thermo blower cut out |
| Position 6 | Thermo blower cut out |

**Step 9:**

Connect the 6 ways and earth connector on the digital programmer and assemble the parts performing the actions in the reverse sequence as defined in steps 1, 2 and 3.