


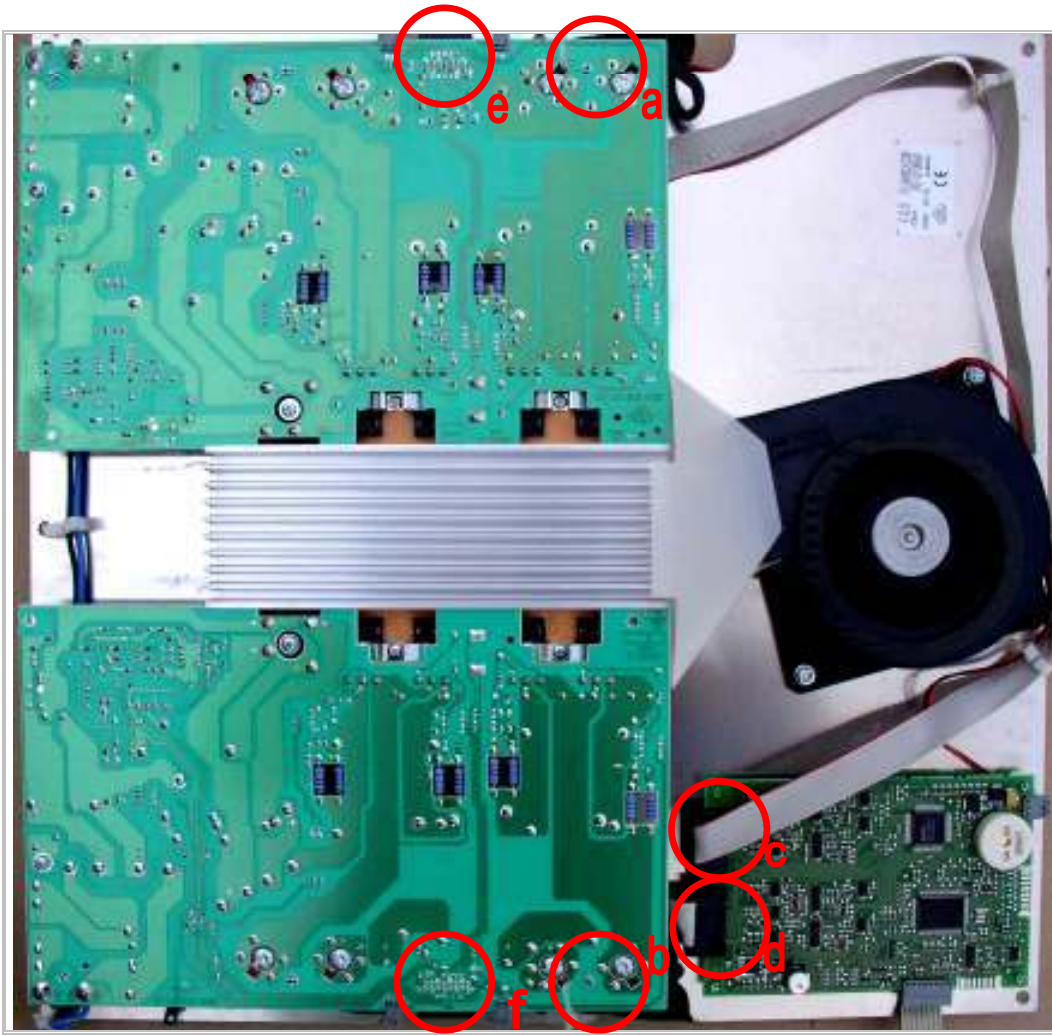
“H” is displayed even though the cooking zone is cold Service kit for all 4-fold induction types

The display of some cooking zones will indicate an “H”, even though the cooking zone has not been switched on. This occurs if pressure is applied to the glass ceramic plate or if a weight is placed on the plate. The spare-part no. 531040 service kit (60-cm induction hobs) and spare-part no. 531041 service kit (80-cm induction hobs), developed especially for this event, in this case comprise two ribbon cables with respective circuit board connections, adhesive tape and illustrated instructions for use.

When replacing, please proceed as follows:

1. Disconnect the appliance from the power supply (safety fuse!)
- 2-6 Remove the ribbon cable present with a pair of pliers and dispose of it. Then pull the rest of the cable out of the black circuit board connection.
- 7.1-2 Remove the ribbon cable which has been adhered to the electronic fan.
- 8.1-2 Now you can pull it out of the circuit board.
- 9-10 Now adhere the adhesive tape supplied to the electronic fan as illustrated. This ensures that one of the replacement ribbon cables is optimally fixed and hence prevents a casing screw from causing any damage to the cable.
- 11.a-b Loosen screw (a), firstly with the pliers and then by screwing it with a screwdriver.
- 12 Lift the circuit board up and insert the new ribbon cable (II) under it.
- 13 Now connect it to the black circuit board connection in position (e).
- 14 Lead the ribbon cable to the electronic fan and
- 15-17 attach it there, as illustrated, with the adhesive tape.
- 18.a-b Press (do not turn) screw (a) in again and then screw it tight.
- 19.a-b Remove screw (b) with pliers and a screwdriver.
- 20 Lift the circuit board up and pull the ribbon cable supplied (I) under it.
 Construction elements subject to electrostatic charging!
Observe handling regulations!
- 21 Connect the ribbon cable with the small connection to the main circuit board (position (f)).
- 22 Use the larger connection to connect it in position (d) with the circuit board of the electronic fan. Observe the handling regulations for electrostatic construction components.
- 23.a-b Press (do not turn) screw (b) in again and then screw it tight.

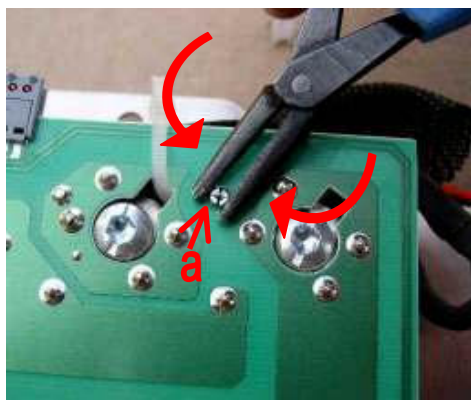
Service-Kit



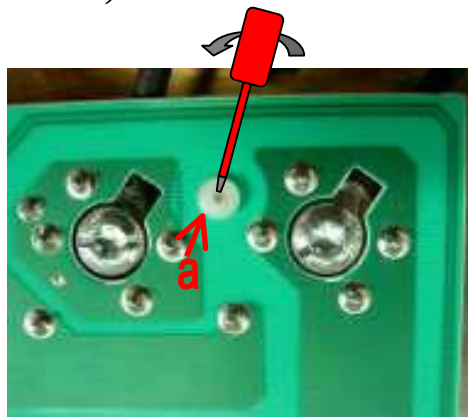
I	
II	
III	
IV	

<p>1.)</p>	<p>2.)</p>	<p>3.)</p>	<p>4.)</p>
<p>5.)</p>	<p>6.)</p>	<p>7.1)</p>	<p>7.2)</p>
<p>8.1)</p>	<p>8.2)</p>	<p>9.)</p>	<p>10.)</p>

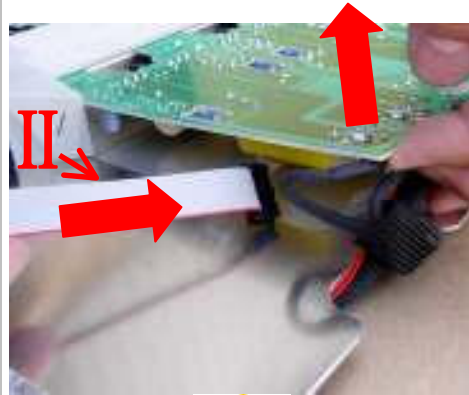
11.a)



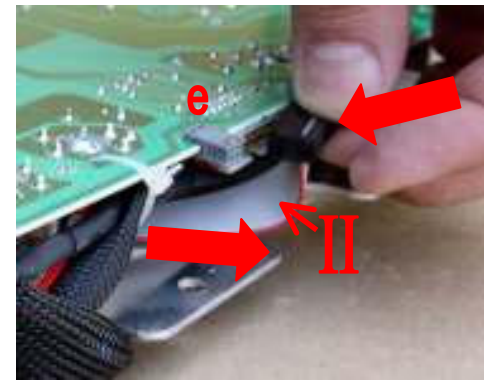
11.b)



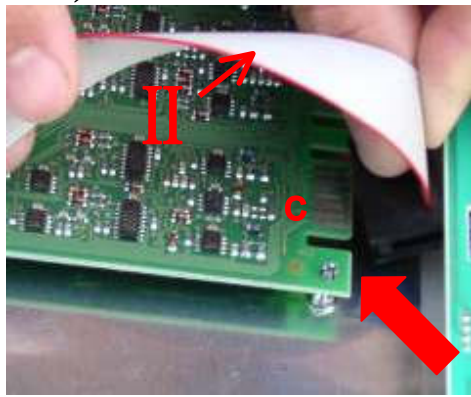
12.)



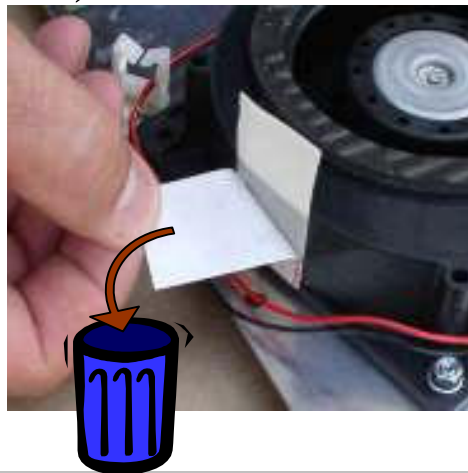
13.)



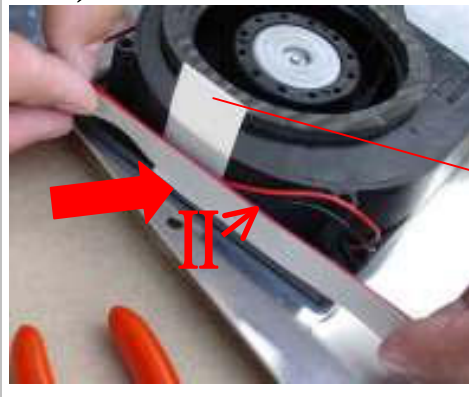
14.)



15.)



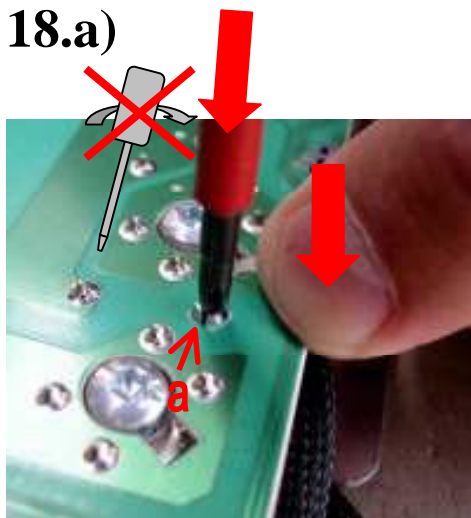
16.)



17.)



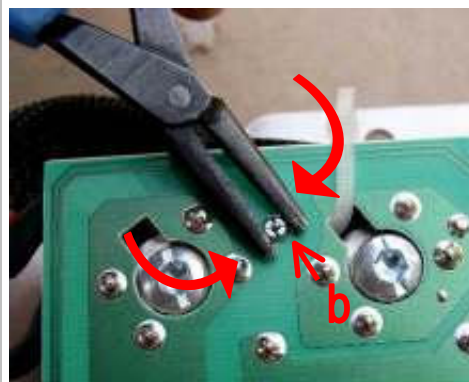
18.a)



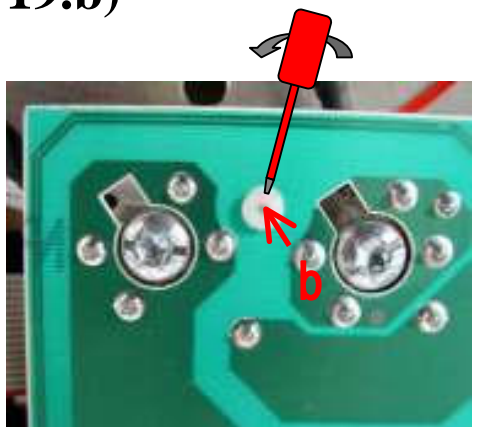
18.b)



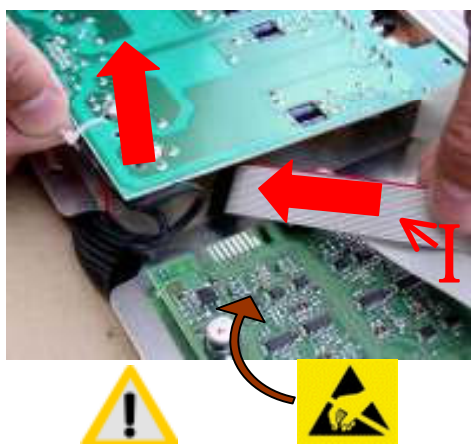
19.a)



19.b)



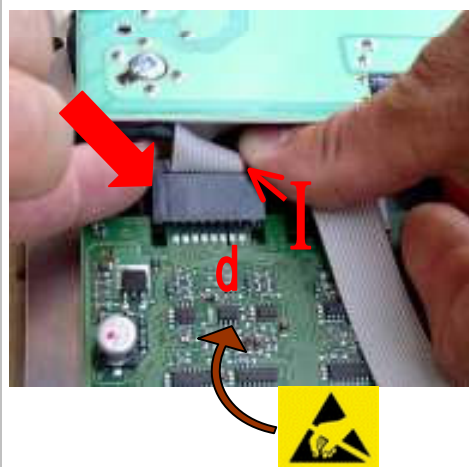
20.)



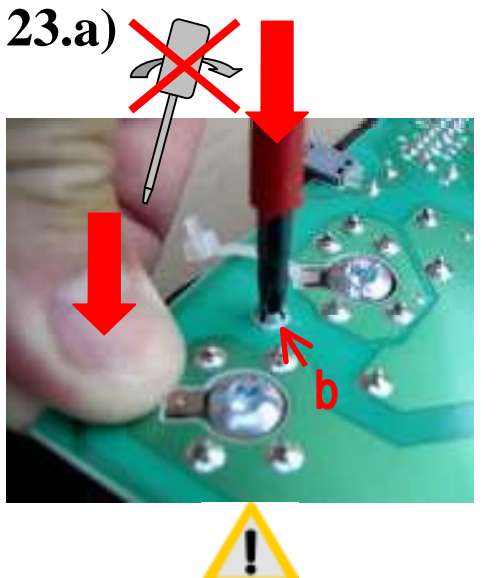
21.)



22.)



23.a)



23.b)

