

## EEB 6800 Demonstration mode

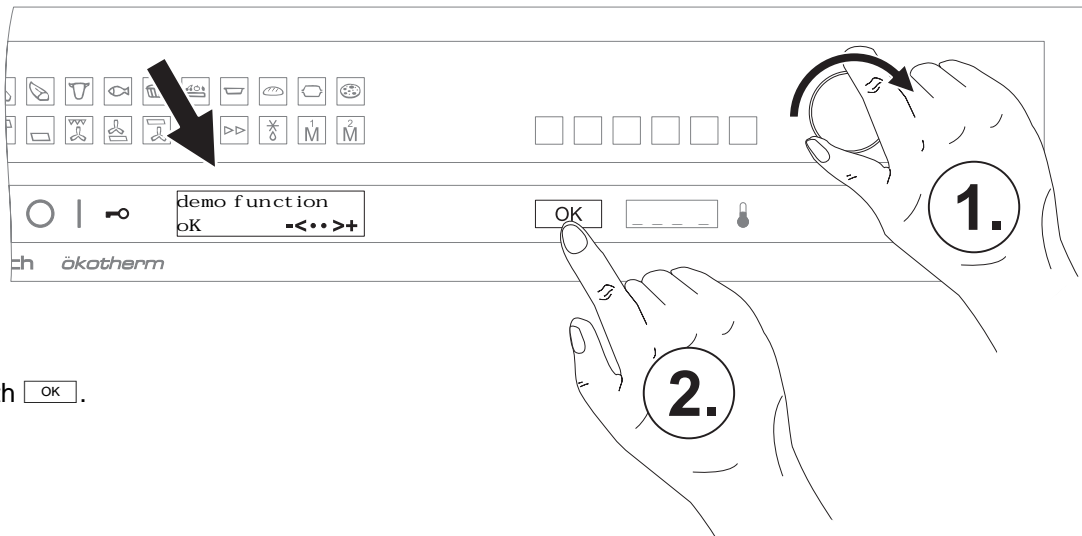
To activate the optional function "Demonstration mode", it is necessary to cut off the power (pull mains switch or disconnect fuse). After power cut-off please wait until <English ok> is displayed.

Confirm with .

After selecting your language, touch the "child lock sensor"  $\rightarrow \circ$ .

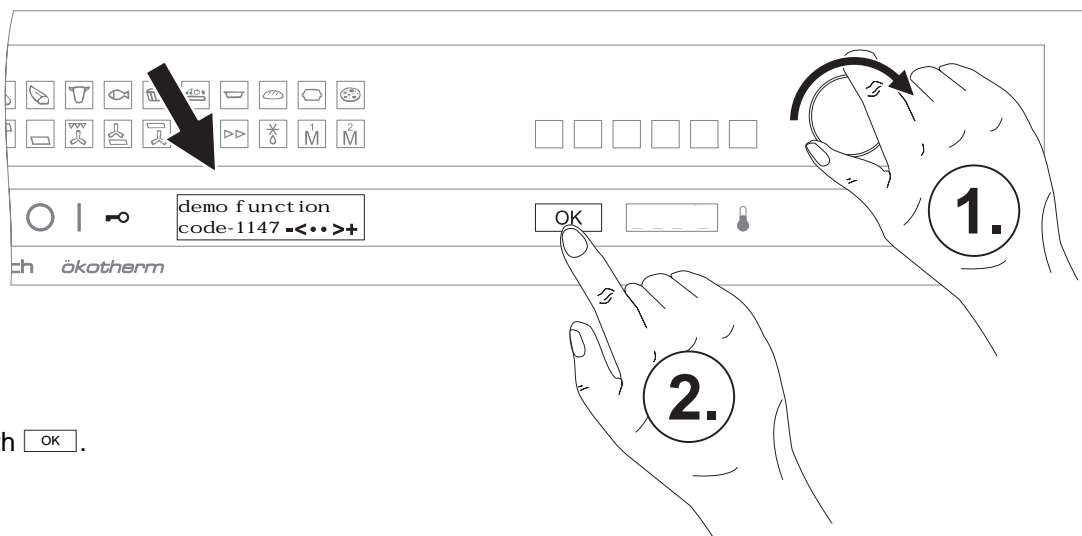
The text display shows <optional functions select ok>.

1. Turn the knob clockwise until the desired function can be chosen.



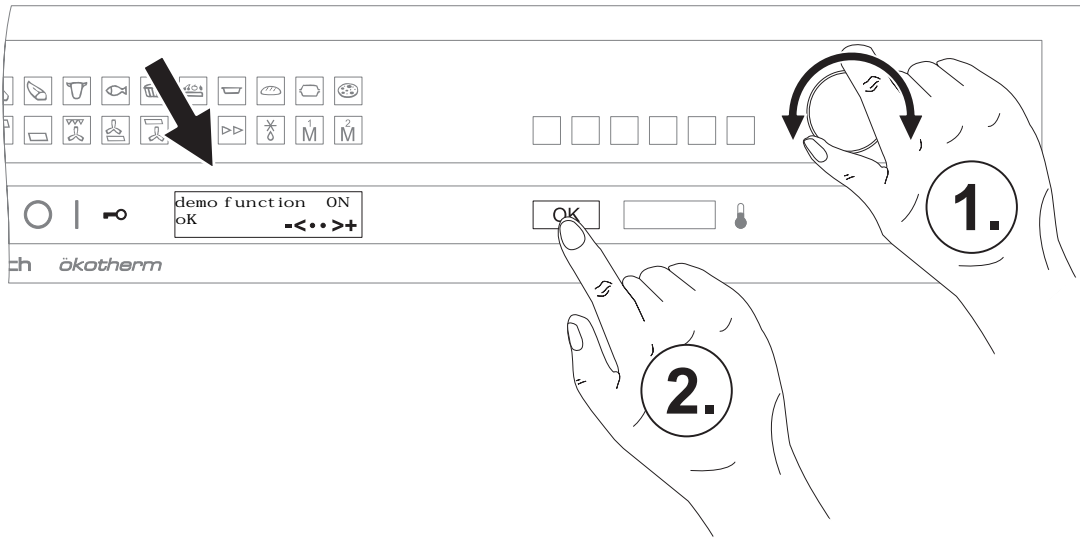
2. Confirm with .

1. Enter code 1147.



2. Confirm with .

1. Turn the knob clockwise to activate the demonstration mode or counterclockwise to deactivate it.



2. Confirm with  and proceed as follows:

