

Responsible: D. Rutz
Date: 11.09.2007

Tel.: (0209) 401 733
Fax: (0209) 401 743



EEH / EEB 6500.05/6600.05

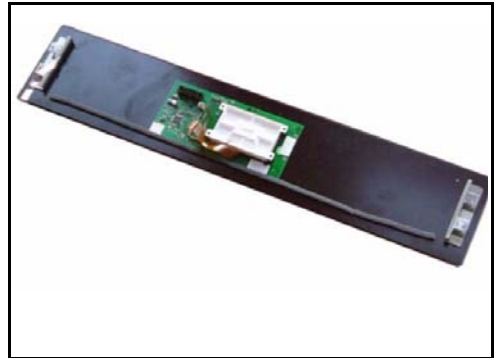
The touch controls cannot be adjusted when the appliance is in operation

At temperatures exceeding 60°C it may occur that the touch controls can no longer be adjusted. This is caused by moisture which has gathered between the display circuit board and the electronics system circuit board.

Adhesive film will need to be used to prevent this from occurring.

Please proceed as follows in this case:

1. Remove the front pane of glass and place it on a clean, soft surface.



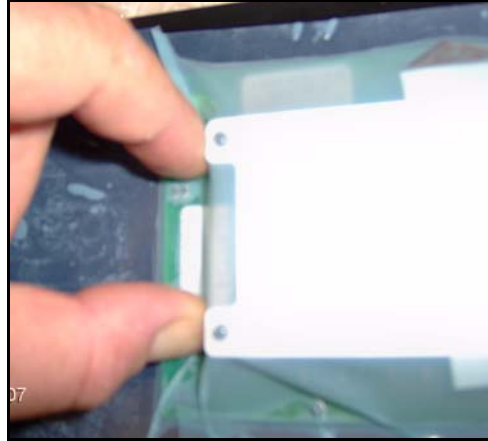
2. Place the backing of the adhesive film onto the flat cable. This will prevent the ribbon cable from moving.



3. Cover evenly with adhesive film.



- When doing so, press the edges of the film down evenly and firmly onto the glass pane, making sure that there are no air bubbles.



- Use a sharp knife to cut through the film in the middle where the flat cable is connected.



- Attach the flat cable and press the adhesive film down firmly all around.

- Replace the front pane of glass, making sure that it is correctly positioned.
Do not damage the adhesive film when doing so.

- Carry out a functional and VDE test.

