

Responsible: D. Rutz
Date: 23.02.2011

Tel.: (0209) 401 733
Fax: (0209) 401 743 (GB)

Rectifying automatic switch-on with the EEB 6550.8

Cause

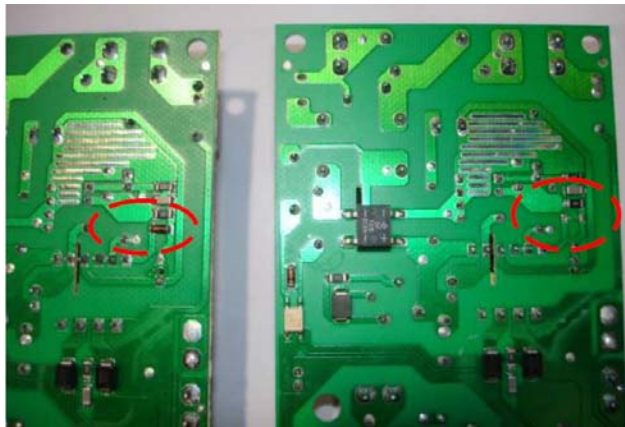
The cause is the failure or the loss of a diode. This fault only occurs with the following models when a special plastic holder is mounted.

Models affected

EEB 6550.8 BCX E0

EEB 6550.8 MX E0

The defect becomes apparent at the back of the power supply unit with the spare-part no. 543355.

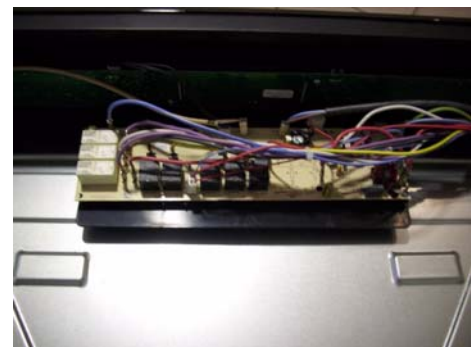


Power supply unit with a
welded on diode

Defect power supply unit
with no diode

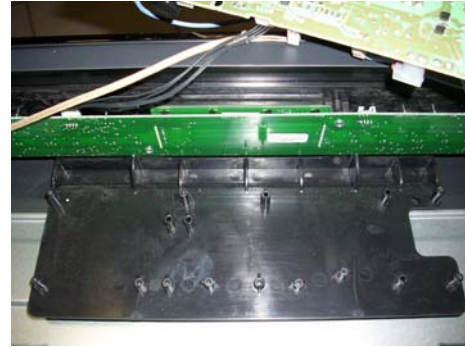
Proceed as follows to repair the fault:

1. Check the model designation and the variant number.
2. Remove the cover of the switch panel and the screws on the power supply unit.



3. Use a standard tool to turn the support out of the plastic holder, as shown on the photo.

The plastic holder does NOT need to be removed from the control panel!



4. Install a new power supply unit (spare-part no. 543355).
5. Check the connections on the electronic unit and carry out a functional test.

