

Responsible: D. Rutz  
Date: 20.12.2004

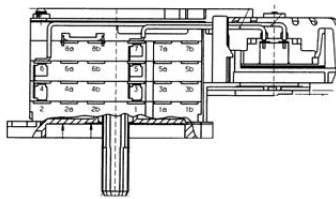
Tel: (0209) 401 733  
Fax: (0209) 401 743



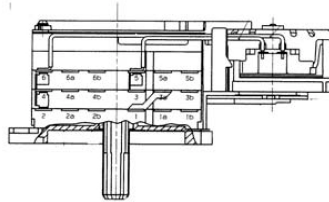
## PROGRAM SWITCH WITHOUT A PLUG FOR THE "SALT INDICATOR"

Some of the dishwasher models are being fitted with a new program switch without a plug (which is, however, being indicated in the following illustrations) for the salt display.

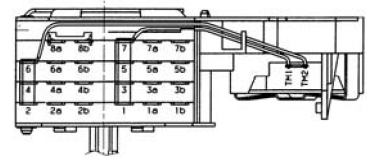
On replacing, a new program switch, with a few plugs that do not need to be used, is supplied as a spare part.



Spare part N. 435 109



Spare part N. 435 021



Spare part N. 435 205

## Models affected

The modification affects all 45cm Evolution and 60cm DIVA models which do not have a salt display.

The program switch which is supplied as a spare part for all of the models named above, also has plugs which are not to be used. Please observe the following chart when replacing.

Type	Differences between the two parts	Spare-part no.
Timer (AKO)	plug 8a-8b and bridge between 8a-8b not present	435 109
Timer (AKO)	plug 8a-8b and bridge between 8a-8b not present	435 205
Timer 3PR (AKO)	plug 2-2a-2b and inner connection 2-4 not present	435 021

## Replaceability

Individual new parts units can replace the old ones.