

Date: 05.03.2013

Responsible: Dieter Rutz
email: dieter.rutz@kueppersbusch.deTel +49 (0)209 401-733
Fax +49 (0)209 401-743

IGV/IGVS 6610.0/1 Program failures / Steam discharge

Faults:

- Door does not close / does not close properly.
- The appliance does not start.
- The appliance stops during the programme / programme runs too long / programme does not finish.
- Programme is interrupted.
- Appliance has to be restarted.
- Display flashes
- Steam discharge/leakage -> because the door is not completely closed.

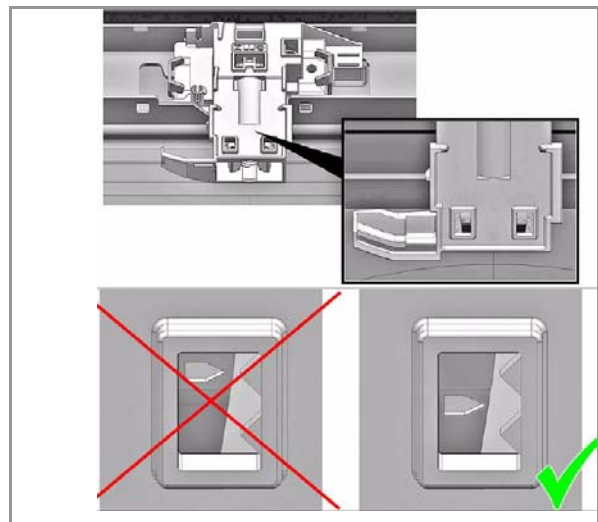
Possible cause:

- Door lock has snapped back - door is not closed properly due to stronger closing force -> lock is not engaged.
- Incorrect installation of the door lock.
- Door lock is not completely engaged.
- Door sealing is not properly mounted (not completely pressed in) - door is not fully closed.
- Faulty installation of appliance (door is pushed open by the furniture, or door catching against the furniture).
- Outer door not installed correctly.
- Incorrect basket loading (door kept open by dishes or upper basket)

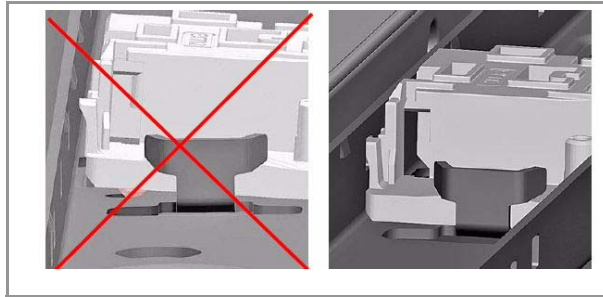
In this case, the Hall sensor detects "appliance door open" and the programme will not start/continue. Depending on the initial door tension and the temperature inside the dishwasher, the Hall sensor switches between "door open and door closed" during the washing process.

Possible remedy:

- Unlock the door lock: push the door with force into the closing position and then open the door. This will reset the door lock.



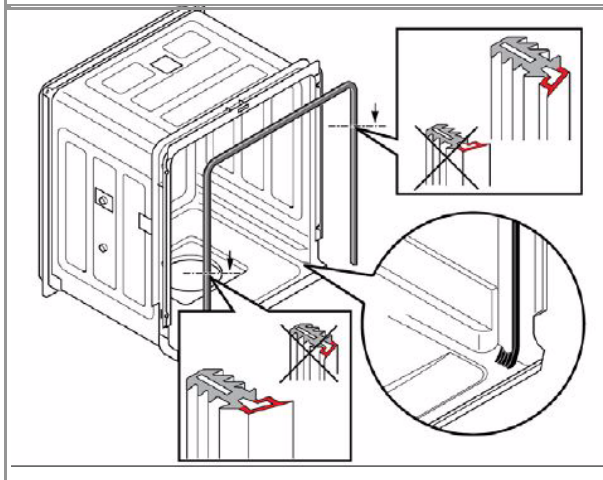
- Check to ensure that the door has been properly mounted.



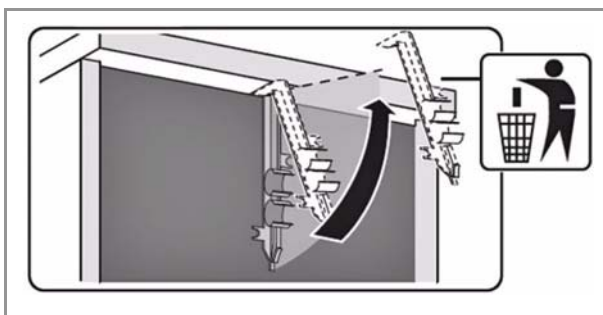
- Check the installation of the door lock fitting.



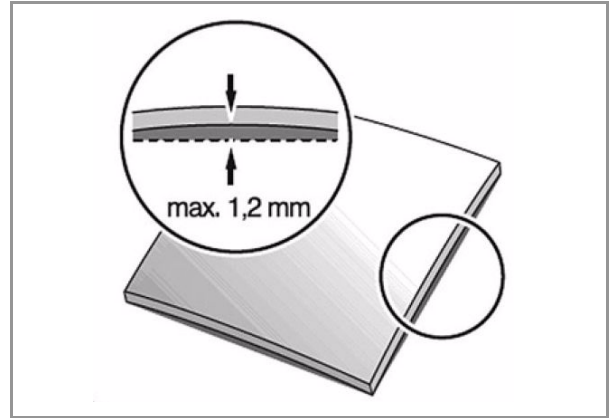
- Check to ensure that the door sealing has been correctly fitted; push in all the way round if necessary.



- Check the installation of the appliance.
 - Check to ensure that the seal has been properly fitted. The sealing lip must face to the inside.



- Check to ensure that the top of the unit is not warped (max. permissible deformation acc. to mounting instructions: 1.2 mm).
- Door / unit door may not knock against other units and put pressure on the lock.



- Check correct mounting of outer door.



- Check basket loading: advice customer of correct loading to ensure that no utensils or dishes are protrude the upper basket.
- Other:
 - Door hinges overstretched -> (max. door opening 90°) - pressure on door therefore increased, lock under pressure. The inner door may be defomed near the hinge
 - Replace the upper profile stip (pos. 0314) with the modified spare part (436655).
 - Screws on the inner door not screwed in properly. Tighten screws.