

Responsible: Uwe Laarmann
Date: 18.06.2003

Phone: (0209) 401 732
Fax: (0209) 401 743



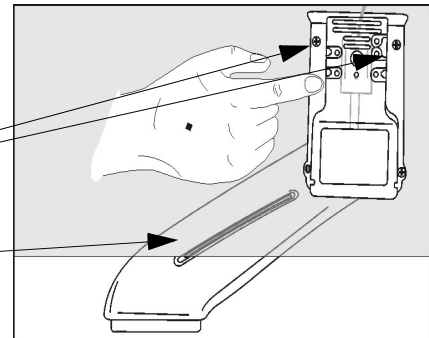
Ice deposits on the IK458... T flap thermostat

Complaint: ice deposits on the flap thermostat in the 0°C keep-fresh chilling compartment, which build up for no obvious reason (such as faulty sealing on the drawer, distortion of the drawer, foreign material between the sealing of the drawer and the surface of the casing bearing the sealing).

Illustration 1 indicates the flap thermostat of the IK458...T appliance, with an air duct located inside the casing insulation (not visible for you).

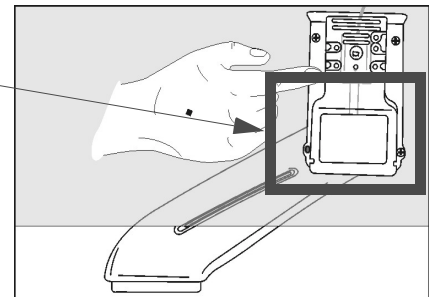
Fastening

Air duct



The ice deposit on the flap thermostat occurs in the region outlined in red. The thickness of the ice deposit depends on how long the ice has been present.

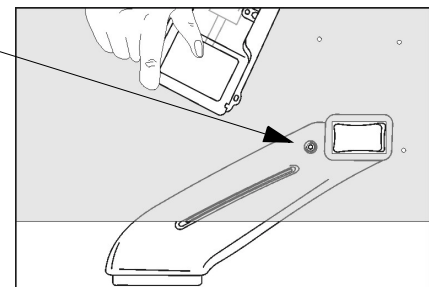
In the event of a build-up of ice, the flap thermostat should always be removed!



The cause of the ice build-up is the fastening screw on the bottom left (arrow), which damaged the air duct.

This damage may have been caused during the production procedure as a result of expansion of the insulation foam (also possible in the case of older appliances).

As long as the fan rotates in the freezer compartment, cold air will be released into the 0°C keep-fresh chilling compartment through the faulty air duct at the closed flap thermostat. The build-up of ice commences in the region of the fastening screw on the bottom left and gradually spreads out.



Rectifying the fault

1. Remove the ice.
2. Remove the screw on the bottom left, dry off any moisture and then fill with silicone (see illustration).
3. Replace the flap thermostat.
4. **Do not replace the fastening screw at the bottom left!**

Should the flap thermostat not be flush in the region of the point of attachment, seal the gap with silicone.

